

L Series 2 Stage HI-LO Pumps

L6 and L8 Series



4F17 Mtg.
Shown

L24 and L26 Series



4F17 Mtg.
Shown

While originally designed for log splitters, our enterprising distributors have found other unique applications.

Two pump sections with different size gear sets in a single housing that provides, high speed positioning capabilities with efficient working pressures.

With multi circuit integration through internal valving to provide low pressure, high volume flow in the first stage and high pressure, low volume flow in the second stage.

- Direct couple to gas engines or AC electric motors at approx (3600 RPM).
- Require only a fraction of the engine horsepower that would be necessary with single stage pumps while providing much higher overall efficiency.

To adapt to a variety of applications, all pumps have an SAE 4F17 mounting flange plus an optional K4 mounting bracket for foot mounting.

MODEL	0 PSI DISP. IN ³ /REV	MAX. PSI	MAX. RPM	~GPM AT 3450 RPM	HP REQUIRED	INLET	OUTLET	PAGE
L6-2	.316 +.108	3000	3600	6.0\1.0	4	3/4 NPTF	1/2 NPTF	23
L8-4	.468 + .187	3000	3600	9.0\2.0	6	3/4 NPTF	1/2 NPTF	23
L24-2	.880 + .222	3000	3600	16\2.5	10	1" TUBE	3/4 NPTF	25
L26-2	1.000 + .416	3000	3600	20\5.0	12	1.25" TUBE	3/4 NPTF	25

Note: Displacement given as larger gear set + smaller gear set.

~ GPM given as combined flow\sequenced flow.

Operation @1725 RPM will give ~ 50% of combined flow and ~ 40% of sequenced flow.

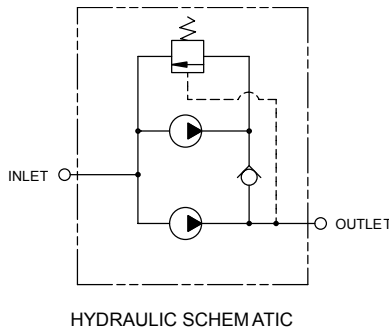
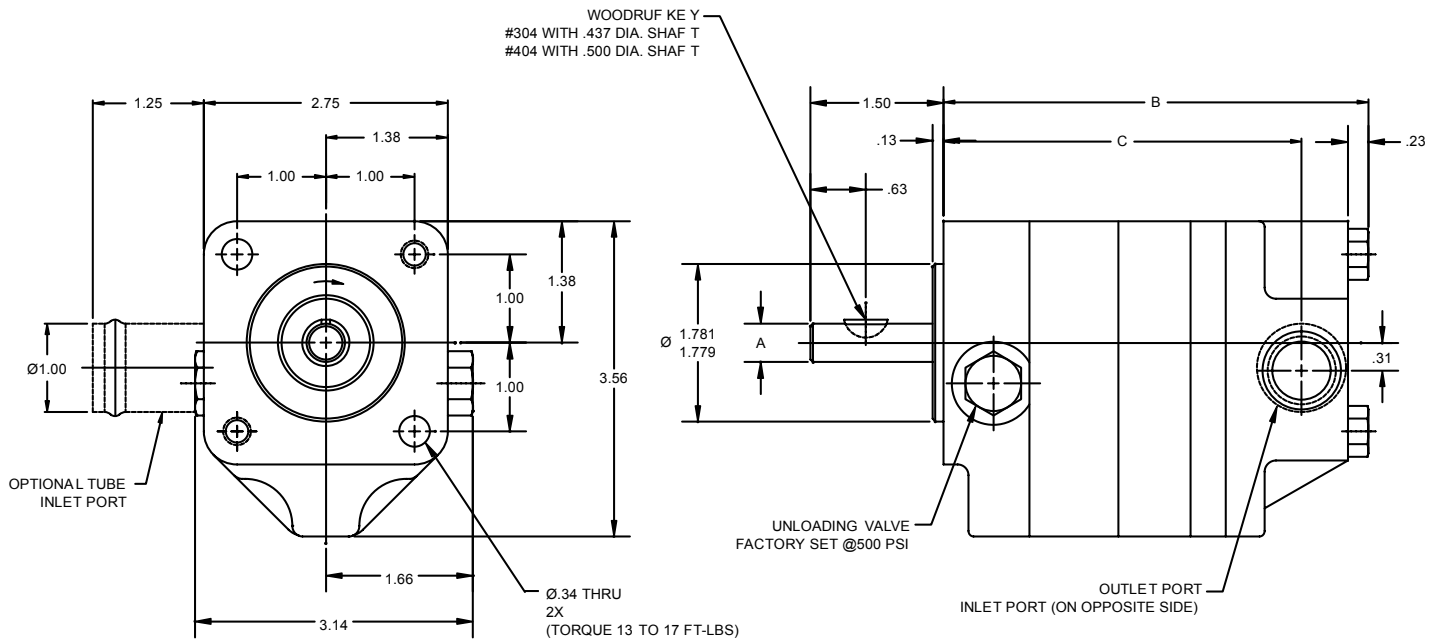
Unloading Valve Settings: Factory set at 500 PSI for L6 and L8 models; 600 PSI for L24 and L26 models.

Rotation: All models rotate clockwise facing pump shaft.

Mounting: 4F17 four bolt all models.

WARNING: The specifications/application data shown in our catalogs and data sheets are intended only as a general guide for the product described (herein). Any specific application should not be undertaken without independent study, evaluation, and testing for suitability.

L6 and L8 Series 2 Stage HI-LO Pumps



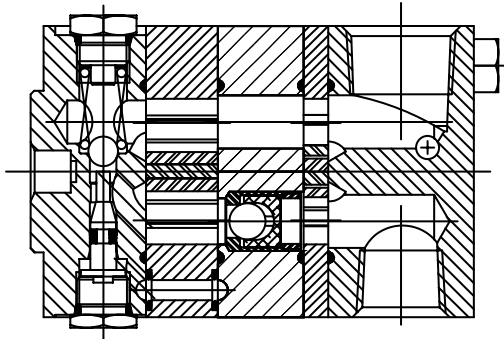
Unloading Valve is factory set at 500 PSI.
 Rotation: All models rotate clockwise facing pump shaft or drive end (CWDE).
 Mounting: 4F17 four bolt all models.

MODEL	0 PSI DISP. IN ³ /REV	MAX. PSI	MAX. RPM	~GPM AT 3450 RPM	HP REQUIRED	INLET	OUTLET	A	B	C
L6-2	.316 +.108	3000	3600	6.0\1.0	4	3/4 NPTF	1/2 NPTF	0.437	4.29	3.37
L8-4	.468 + .187	3000	3600	9.0\2.0	6	3/4 NPTF	1/2 NPTF	0.437	4.79	3.87

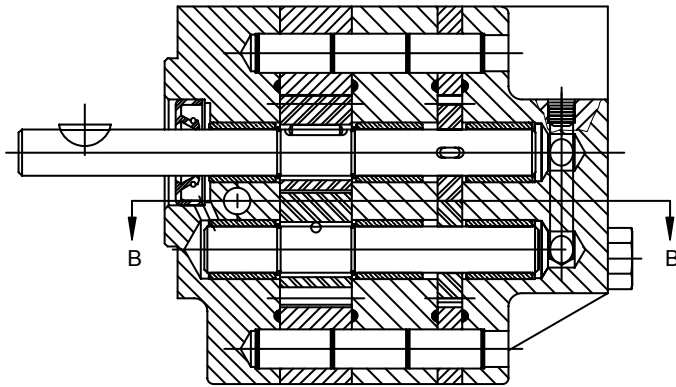
Note: Displacement given as larger gear set + smaller gear set.
 ~ GPM given as combined flow\sequenced flow.
 Operation @1725 RPM will give ~ 50% of combined flow and ~ 40% of sequenced flow.

WARNING: The specifications/application data shown in our catalogs and data sheets are intended only as a general guide for the product described (herein). Any specific application should not be undertaken without independent study, evaluation, and testing for suitability.

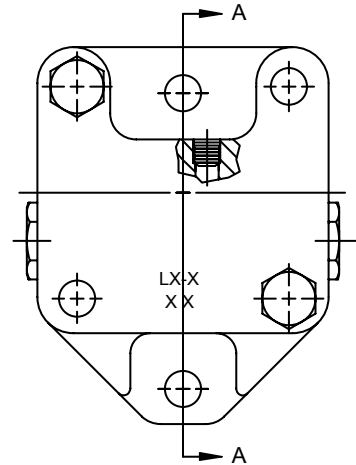
L6 and L8 Series 2 Stage HI-LO Pumps



SECTION B-B

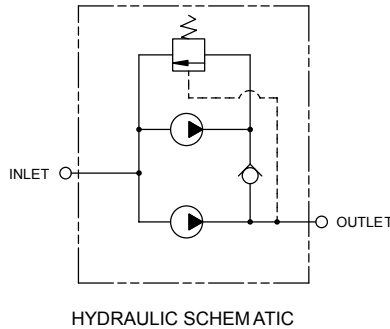
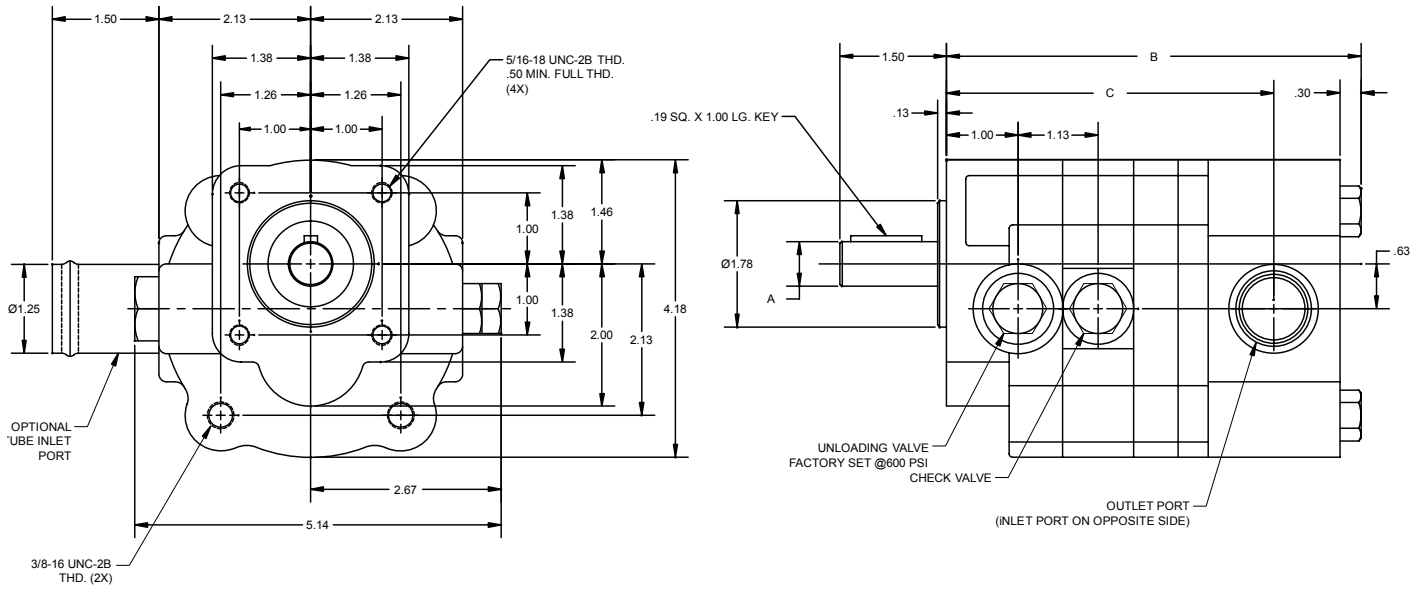


SECTION A-A



WARNING: The specifications/application data shown in our catalogs and data sheets are intended only as a general guide for the product described (herein). Any specific application should not be undertaken without independent study, evaluation, and testing for suitability.

L24 and L26 Series 2 Stage HI-LO Pumps



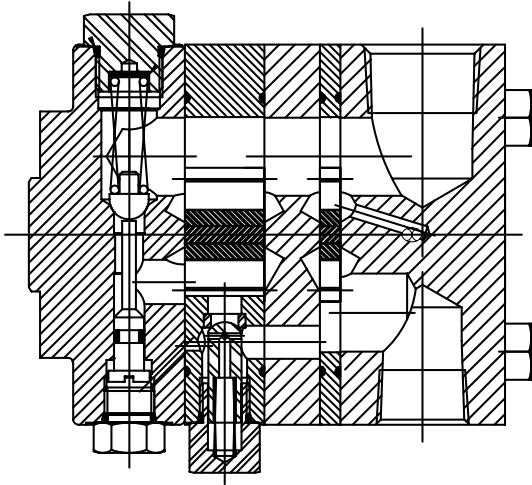
Unloading Valve is factory set at 600 PSI.
 Rotation: All models rotate clockwise facing pump shaft or drive end (CWDE).
 Mounting: 4F17 four bolt all models.

MODEL	0 PSI DISP. IN ³ /REV	MAX. PSI	MAX. RPM	~GPM AT 3450 RPM	HP REQUIRED	INLET	OUTLET	A	B	C
L24-2	.880 + .222	3000	3600	16\2.5	10	1 NPTF	3/4 NPTF	0.625	5.52	4.30
L26-2	1.000 + .416	3000	3600	20\5.0	12	1.25 " TUBE	3/4 NPTF	0.625	5.82	4.59

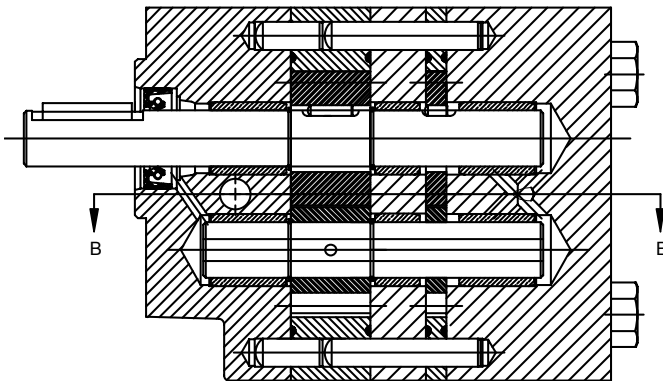
Note: Displacement given as larger gear set + smaller gear set.
 ~ GPM given as combined flow\sequenced flow.
 Operation @1725 RPM will give ~ 50% of combined flow and ~ 40% of sequenced flow.

WARNING: The specifications/application data shown in our catalogs and data sheets are intended only as a general guide for the product described (herein). Any specific application should not be undertaken without independent study, evaluation, and testing for suitability.

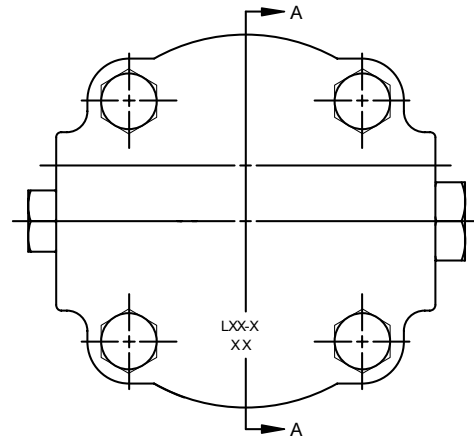
L24 and L26 Series 2 Stage HI-LO Pumps



SECTION B-B



SECTION A-A



WARNING: The specifications/application data shown in our catalogs and data sheets are intended only as a general guide for the product described (herein). Any specific application should not be undertaken without independent study, evaluation, and testing for suitability.