



LGB Air Breathers

Threaded / Bayonet Flange

Model LGB

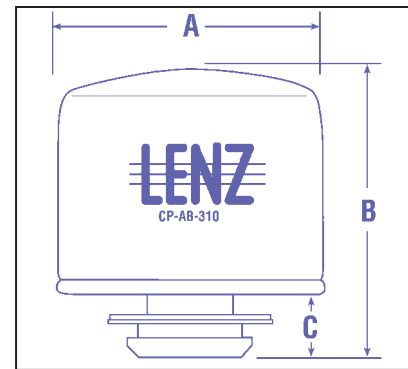
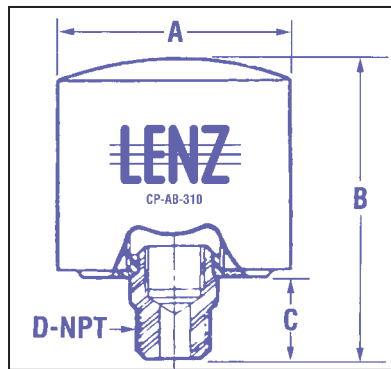
- White metal filter canister
- Zinc plated steel adapter
- Air flow to 200 CFM (1125 GPM)
- Compatible with most fluids
- Temperature to 250° F (121° C)
- 1/2", 3/4" & 1" NPT Threads
(Optional threads available; Consult Factory)

Options:

- 10 micron glass media
- 10 or 30 cellulose media



*Comes with flange, gasket, screen & mounting screws



Dimensional Detail

MODEL NO.	ADAPTER	ELEMENT	MICRON RATING	PORT SIZE	DISPLACEMENT GPM	AIR FLOW (CFM)		A	B	C	FILTER AREA IN 2 (CM ²)
LGB-8-10-18	LABA-8-8	CP1018	10	1/2"	300	40	IN MM	3 76	4.4 112	1 25	113 (733)
LGB-8-03	LABA-8	CP-752-03	3	3/4"	600	100	IN MM	7.1 180	5.4 137	3.8 97	390 (2504)
LGB-8-10	LABA-8	CP-752-10	10	3/4"	900	100	IN MM	7.1 180	5.4 137	3.8 97	550 (3532)
LGB-8-30	LABA-8	CP-752-30	25	3/4"	900	100	IN MM	7.1 180	5.4 137	3.8 97	550 (3532)
LGB-12-310	LABA12-12	CP-AB-310	10	3/4"	300	40	IN MM	3.6 91	4.3 109	1.1 28	215 (1387)
*LGB-B-310	B12	CP-AB-310	10	BAYONET	300	40	IN MM	4 91	4.3 109	1.1 28	215 (1387)
LGB-12-03	LABA-12	CP-752-03	3	3/4"	1125	150	IN MM	7.1 180	5.4 137	3.8 97	390 (2504)
LGB-12-10	LABA-12	CP-752-10	10	3/4"	1125	150	IN MM	7.1 180	5.4 137	3.8 97	550 (3532)
LGB-12-30	LABA-12	CP-752-30	25	3/4"	1125	150	IN MM	7.1 180	5.4 137	3.8 97	550 (3532)
LGB-16-03	LABA-16	CP-752-03	3	1"	1250	200	IN MM	7.1 180	5.4 137	3.8 97	390 (2504)
LGB-16-10	LABA-16	CP-752-10	10	1"	1250	200	IN MM	7.1 180	5.4 137	3.8 97	550 (3532)
LGB-16-30	LABA-16	CP-752-30	25	1"	1250	200	IN MM	7.1 180	5.4 137	3.8 97	550 (3532)
LGB-20-10	LABA-20	CP-1282-10-50	10	1 1/4"	1875	250	IN MM	4.8 122	9.4 239	2.5 64	945 (6069)
LGB-20-25	LABA-20	CP-1282-25-50	25	1 1/4"	1875	250	IN MM	4.8 122	9.4 239	2.5 64	945 (6069)





Filler Breather Tank-Top Mount

Model ABS-40/ABS-30

PART	DESCRIPTION	GPM	CFM
ABS-40	40 Micron - Polymide 66-Nylon	79	10
ABS-30	40 Micron - Polymide 66-Nylon	26	4

Filler Breather for tank-top installation with breather and strainer basket.

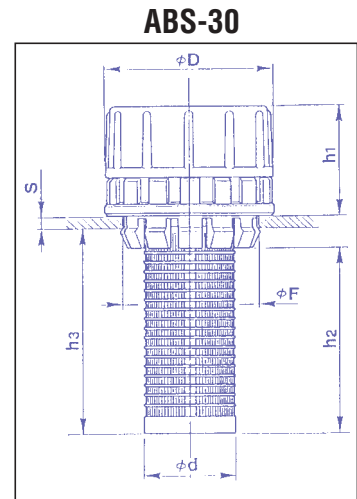
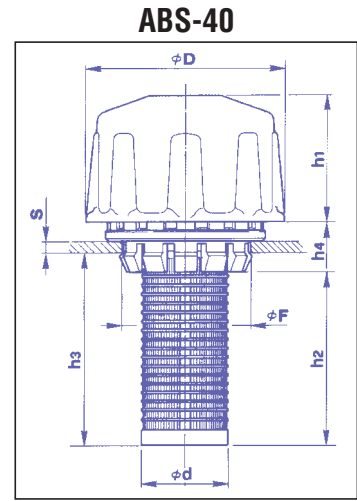
Filler Breather Cap has internal thread, and screws onto the main body, located in the tank.

This filler breather assembly contains a 40 Micron breather cap, a snap locking ring on main body, a threaded locking ring with "O" ring seal, and strainer basket.

Main body is placed in a pre-drilled hole 2.16" (55 mm) minimum, 2.18" (55.3) maximum in the top of reservoir (tank). The wall thickness must not exceed .3149" (8 mm) and not less than .0781" (2 mm). The threaded locking ring with "O" ring, secures and seals the main body to the tank.

Safety chain is standard, which connects the cap to the body, preventing loss of cap when removed.

With this filler breather assembly, drilling, tapping and aligning of mounting holes is not needed, reducing labor costs.



Dimensional Detail

MODEL		D	h2	d	h1	h4	F	h3	S
ABS-40	IN	3.5	3.1	1.5	2.2	0.8	2.2	3.5	.1-.3"
	MM	88	80	38	55	21	55	88	2-8mm
ABS-30	IN	2.8	3.1	1.5	1.9		2.2	3.5	.1-.3"
	MM	70	80	38	47		55	88	2-8mm

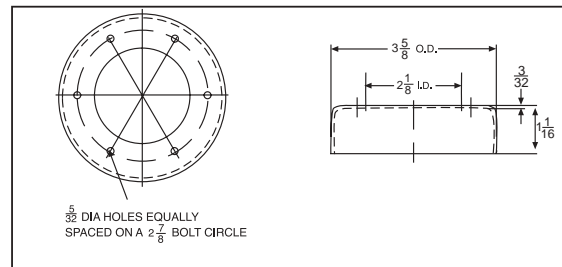
Weld Neck Risers

Model LWR

The "LWR" series Weld Neck Risers are designed to raise filler breather assemblies up to 1" above the surface of the tank top. This low cost riser eliminates costly repairs brought on by contamination and water being swept into the reservoir.



MODEL	MATERIAL	HEIGHT
LWR-1	Steel	1 1/16"
LWR-1-ALUM	Aluminum	1 1/16"
LWR-1-SS	Stainless	1 1/16"





Filler Breather Tank-Top Mount

Model ABS-40/ABS-30

PART	DESCRIPTION	GPM	CFM
ABS-40	40 Micron - Polymide 66-Nylon	79	10
ABS-30	40 Micron - Polymide 66-Nylon	26	4

Filler Breather for tank-top installation with breather and strainer basket.

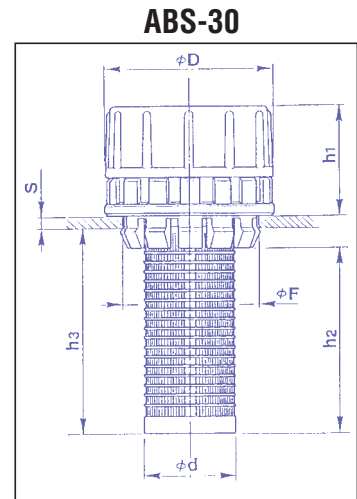
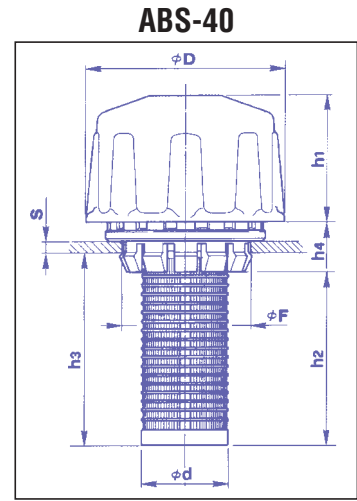
Filler Breather Cap has internal thread, and screws onto the main body, located in the tank.

This filler breather assembly contains a 40 Micron breather cap, a snap locking ring on main body, a threaded locking ring with "O" ring seal, and strainer basket.

Main body is placed in a pre-drilled hole 2.16" (55 mm) minimum, 2.18" (55.3) maximum in the top of reservoir (tank). The wall thickness must not exceed .3149" (8 mm) and not less than .0781" (2 mm). The threaded locking ring with "O" ring, secures and seals the main body to the tank.

Safety chain is standard, which connects the cap to the body, preventing loss of cap when removed.

With this filler breather assembly, drilling, tapping and aligning of mounting holes is not needed, reducing labor costs.



Dimensional Detail

MODEL		D	h2	d	h1	h4	F	h3	S
ABS-40	IN	3.5	3.1	1.5	2.2	0.8	2.2	3.5	.1-.3"
	MM	88	80	38	55	21	55	88	2-8mm
ABS-30	IN	2.8	3.1	1.5	1.9		2.2	3.5	.1-.3"
	MM	70	80	38	47		55	88	2-8mm

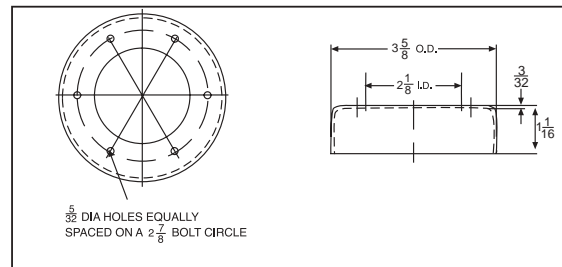
Weld Neck Risers

Model LWR

The "LWR" series Weld Neck Risers are designed to raise filler breather assemblies up to 1" above the surface of the tank top. This low cost riser eliminates costly repairs brought on by contamination and water being swept into the reservoir.



MODEL	MATERIAL	HEIGHT
LWR-1	Steel	1 1/16"
LWR-1-ALUM	Aluminum	1 1/16"
LWR-1-SS	Stainless	1 1/16"





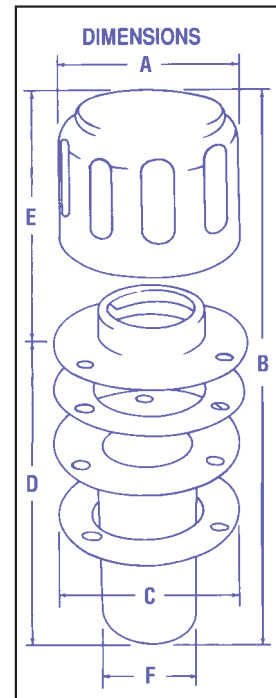
Filler Breather Mini Cap Filler Strainer Breather

Model FCS-M

- Chrome plated steel cap
- 30 mesh basket
- 3-10/32" self tapping screws for flange mount
- Cork gaskets
- Air flow to 10 CFM (30M /MIN)
- 15/8" inch (41.3 mm) diameter bolt circle
- For use with petroleum based fluids, high water glycols and water/oil emulsions

Options

- 10 or 40 micron foam elements



Dimensional Detail

MODEL	MICRON RATING	DISPLACEMENT GPM	AIRFLOW CFM	DIMENSIONS								WEIGHT LB/KG
				A	B	C	D	E	F			
FCS-M	40	71	10	IN	1.9	4.0	2	2.6	1.4	1.1	1.5	
	270			MM	48	101	52	66	35	27	0.7	
FCS-10M	10	36	5	IN	1.9	4.0	2	2.6	1.4	1.1	1.8	
	135			MM	48	101	52	66	35	27	0.8	

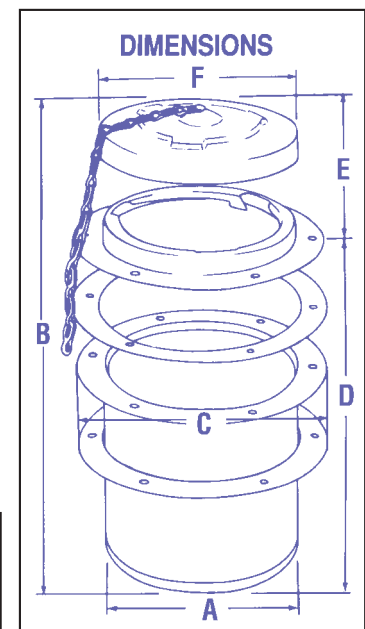
Super Filler Cap Assembly

Model FCS-1303

- Plated steel cap mesh wire basket
- 6-8/32" self tapping screws for flange mount
- Cork gaskets
- 415/16" inch (125 mm) diameter bolt circle
- For use with petroleum based fluids, high water glycols and water/oil emulsions

Options

- 24 or 70 mesh stainless screens



Dimensional Detail

Model No.	MESH		A	B	C	D	E	F
FCS-1303-70	70	IN	4.4	5.1	5.6	4	1.1	4.4
		MM	112	130	142	102	28	112
FCS-1303-24	24	IN	4.4	5.1	5.6	4	1.1	4.4
		MM	112	130	142	102	28	112





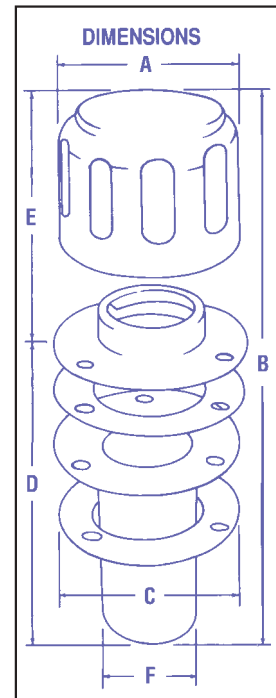
Filler Breather Mini Cap Filler Strainer Breather

Model FCS-M

- Chrome plated steel cap
- 30 mesh basket
- 3-10/32" self tapping screws for flange mount
- Cork gaskets
- Air flow to 10 CFM (30M /MIN)
- 15/8" inch (41.3 mm) diameter bolt circle
- For use with petroleum based fluids, high water glycols and water/oil emulsions

Options

- 10 or 40 micron foam elements



Dimensional Detail

MODEL	MICRON RATING	DISPLACEMENT GPM	AIRFLOW CFM	DIMENSIONS							
				IN	MM	A	B	C	D	E	F
FCS-M	40	71	10	IN	1.9	4.0	2	2.6	1.4	1.1	1.5
	MM			48	101	52	66	35	27	0.7	
FCS-10M	10	36	5	IN	1.9	4.0	2	2.6	1.4	1.1	1.8
	MM			48	101	52	66	35	27	0.8	

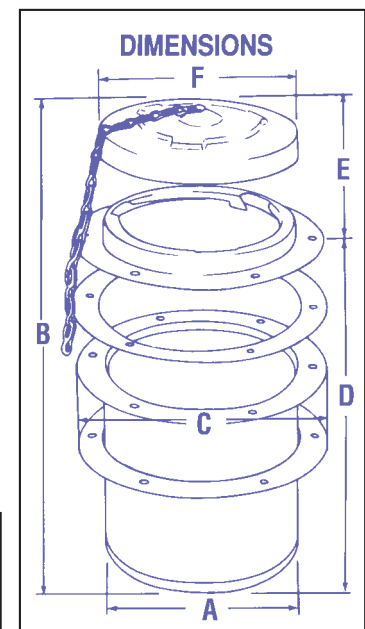
Super Filler Cap Assembly

Model FCS-1303

- Plated steel cap mesh wire basket
- 6-8/32" self tapping screws for flange mount
- Cork gaskets
- 415/16" inch (125 mm) diameter bolt circle
- For use with petroleum based fluids, high water glycols and water/oil emulsions

Options

- 24 or 70 mesh stainless screens



Dimensional Detail

Model No.	MESH		A	B	C	D	E	F
FCS-1303-70	70	IN	4.4	5.1	5.6	4	1.1	4.4
		MM	112	130	142	102	28	112
FCS-1303-24	24	IN	4.4	5.1	5.6	4	1.1	4.4
		MM	112	130	142	102	28	112





Breather Filter-Threaded Metal Assemblies

Breather Filter

Model BF

These units act as ventilators to provide a free flow of clean, fresh air into hydraulic fluid, fuel, oil, chemical and coolant tanks or reservoirs. They compensate for changes in fluid level, temperature and altitude . . . provide positive protection for airborne contamination for tanks, pumps, valves, cylinders and other components. Large oil resistant filter elements filter dirt and dust particles as small as 10 Microns (40 micron standard). Cover removes for easy cleaning.
 BF-4 & BF-6 Zinc plated. BF-8, BF-12 Nickel plated & BF-16 Nickel-chrome.

10 MICRON OPTION: EXAMPLE BF-6-10M

BF-8 & BF-12

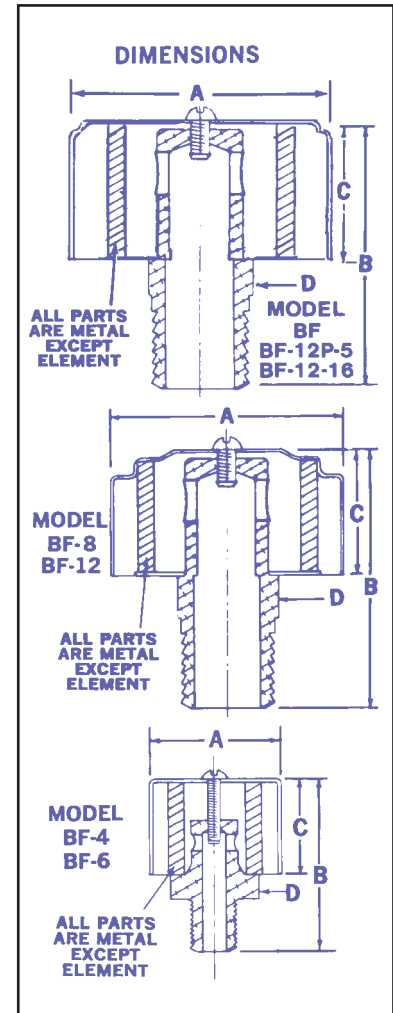


BF-16
BF-12P-5

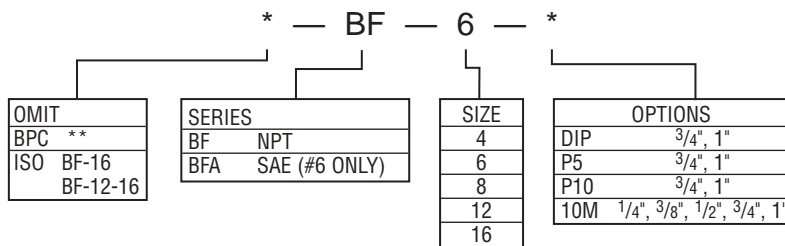
BF-4 & BF-6

Dimensional Detail

MODEL	MICRON	PIPE SIZE	AIR FLOW		A	B	C	D
BF-4	10,40	1/4	4	IN	1.4	1.9	1	0.7
				MM	35	47	25	18
BF-6	10,40	3/8,9/16-18	4	IN	1.4	1.9	1	0.7
				MM	35	47	25	18
BF-8	10,40	1/2	35	IN	2.6	2.9	1.4	0.9
				MM	67	74	36	24
BF-12	10,40	3/4	40	IN	2.6	3	1.4	1.1
				MM	67	76	36	27
BF-16	10,40	1	75	IN	3	3.3	1.7	1.4
				MM	76	83	43	35



Ordering Code

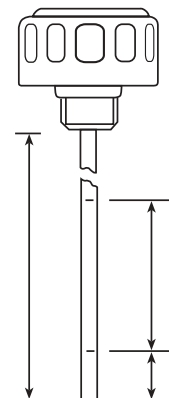
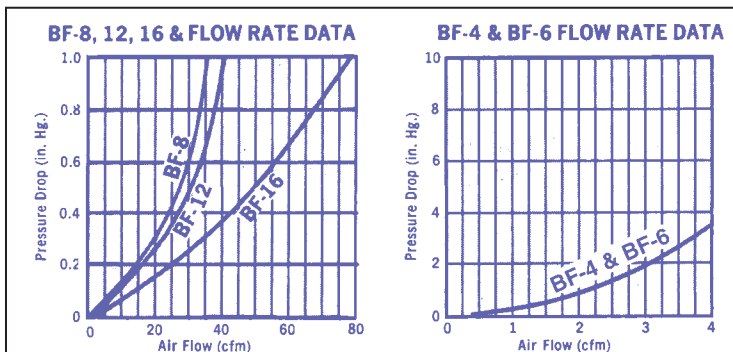


Pressurized Breather Filter

BF-12P-5

This device is similar to a conventional breather, but it incorporates a relief valve set at 5 PSI and a vacuum breaker. When the fluid level first falls, air enters the reservoir through the vacuum breaker and filter. When the level rises, air is compressed rather than being expelled. Thereafter, changing fluid levels are accommodated by the changing size of the air bubble in the reservoir, instead of by breathing to atmosphere.

Pressurized breathers can reduce breathing by as much as 90% to 95%, increasing the life of the breather filter by a factor of 10. They are recommended for systems that are expected to operate in extremely dusty environments and mobile applications.



Please supply drawing specifying lengths shown. Dipstick may be marked "FULL" and "ADD". Optional wording available.





NY

Nylon Filler Breathers

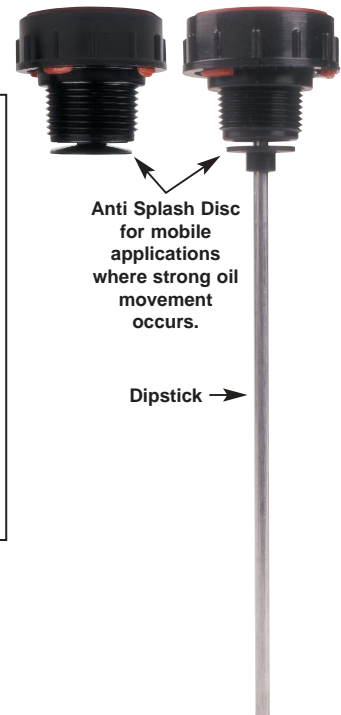
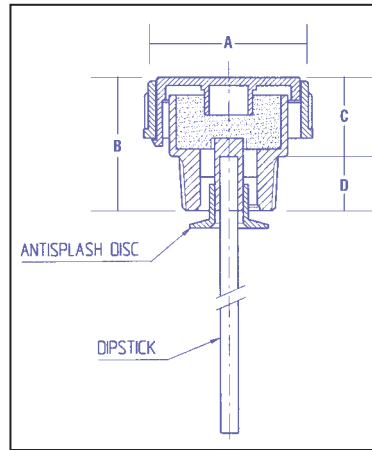
Specifications

- 1/4" to 1 1/4" NPT Threaded Filter Filler Breathers
- Thermoplastic Polyamide 66 Material
- Maximum Operating Temperature 250°F (100°C)
- Compatible with Petroleum Based Fluids, Gasoline, Fuel, and variety of Solvents
- Not compatible with Alcohol
- 10 or 40 micron polyurethane elements
- Buna Seals
- Anti splash option available
- NPT Threads
- Maximum Pressure 47 PSI (3 Bar)
- Optional steel plated dipstick available up to 7.9 inches (200 mm) and can be marked with min & max notches upon request.
- Measure from end to thread.



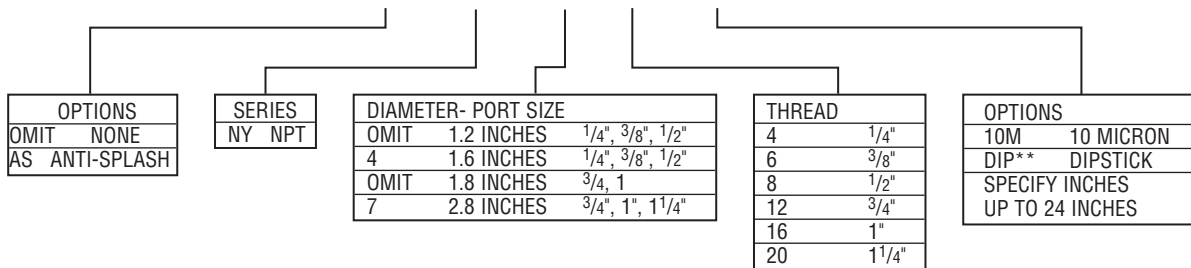
Dimensional Detail

MODEL	PORT SIZE		A	B	C	D
NY-4	1/4"	IN	1.2	1.4	0.8	0.6
		MM	30	35	21	14
NY-4-4	1/4"	IN	1.6	1.3	0.8	0.5
		MM	41	33	21	12
NY-6	3/8"	IN	1.2	1.4	0.8	0.6
		MM	30	36	21	15
NY-4-6	3/8"	IN	1.6	1.3	0.8	0.5
		MM	41	34	21	13
NY-8	1/2"	IN	1.2	1.4	0.8	0.6
		MM	30	36	21	15
NY-12	3/4"	IN	1.8	1.5	0.9	0.6
		MM	46	38	22	16
NY-7-12	3/4"	IN	2.8	2	1.4	0.7
		MM	70	52	35	17
NY-16	1"	IN	1.8	1.5	0.9	0.6
		MM	46	38	22	16
NY-7-16	1"	IN	2.8	2.1	1.4	0.7
		MM	70	54	35	19
NY-7-20	1 1/4"	IN	2.8	2.2	1.4	0.8
		MM	70	55	35	20



Ordering Code

AS — NY — 4 — 6 — DIP**



NY-PF

Nylon Push Fit Breathers

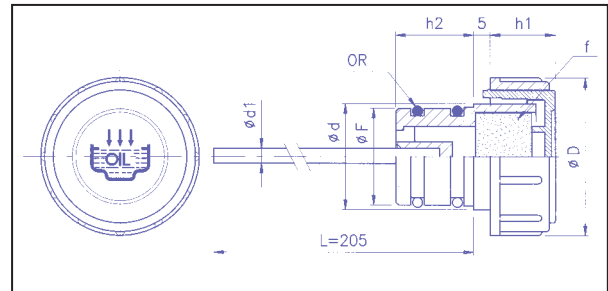
Specifications

- .7 in to 1.2 in. (18 to 30 mm) Push Fit Filter Filler Breathers
- Push fit breather with easy grip vertical ribs fit snugly into pre-drilled hole and seals by O Ring hole tolerance .003 in. (0.1mm)
- Thermoplastic Polyamide 66 Material
- Maximum Operating Temperature 250°F (100°C)
- Compatible with Petroleum Based Fluids, Gasoline, Fuel, and variety of Solvents
- Not compatible with Alcohol
- 10 or 40 micron polyurethane elements
- Buna Seals
- Anti splash option available
- Maximum Pressure 47 PSI (3 Bar)
- Optional steel plated dipstick available up to 7.9 inches (200 mm) and can be marked with min & max notches upon request



Dimensional Detail

MODEL NO.		F	D	d	hi	di	hz
NYPF-18	IN	0.71	1.42	0.91	0.67	0.2	0.79
	MM	18	36	23	17	5	20
NYPF-20	IN	0.79	1.42	0.94	0.67	0.16	0.75
	MM	20	36	24	17	4	19
NYPF-26	IN	1.02	1.61	1.1	0.67	0.16	0.83
	MM	26	41	28	17	4	21
NYPF-30	IN	1.18	1.85	1.3	0.67	0.16	0.83
	MM	30	47	33	17	4	21
NYPFV-18	IN	0.71	1.42	0.91	0.67	0.2	0.79
	MM	18	36	23	17	5	20
NYPFV-20	IN	0.79	1.42	0.94	0.67	0.16	0.75
	MM	20	36	24	17	4	19
NYPFV-26	IN	1.02	1.61	1.1	0.67	0.16	0.83
	MM	26	41	28	17	4	21



ADD AS - As prefix for Antisplash
ADD DIP Suffix for Dipstick

LDP

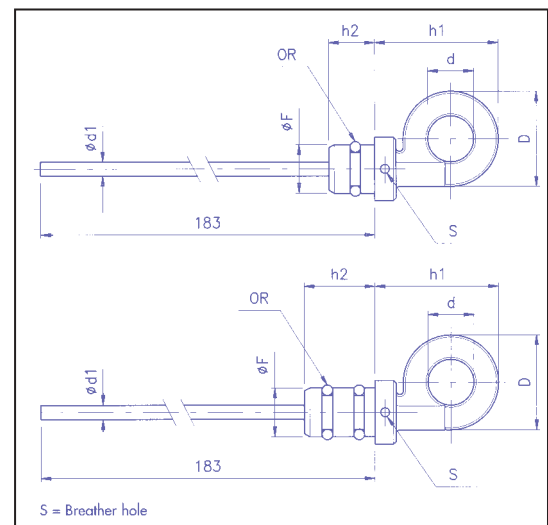
Eye Handle Dipsticks

- Eye handle steel plated dipsticks
- Handle material Thermoplastic Polyamide 66
- Starting chamfer is 45° degrees with hole tolerance .003 in. (.01 mm)
- Maximum Operating Temperature 250° F (100° C)
- Compatible with Petroleum Based Fluids, Gasoline, Fuel, and variety of Solvents
- Not compatible with Alcohol
- Optional breather hole available
- Buna Seals (one or two seals)
- Maximum length is 7.9 in. (200 mm)
- Maximum Pressure 47 PSI (3 Bar)
- Steel plated dipstick available up to 7.9 inches (200 mm) and can be marked with min & max notches upon request



Dimensional Detail

MODEL NO		F	D	d	H2	H1
LDP-1-14	IN	0.55	1.06	0.51	0.51	1.34
	MM	14	27	13	13	34
LDP-1-18	IN	0.71	1.26	0.55	0.67	1.77
	MM	18	32	14	17	45
LDP-1-20	IN	0.79	1.26	0.55	0.71	1.75
	MM	20	32	14	18	44.5
LDP-2-12	IN	0.47	1.18	0.55	0.79	1.42
	MM	12	30	14	20	36
LDP-2-14	IN	0.55	1.06	0.51	0.79	1.34
	MM	14	27	13	20	34
LDP-2-18	IN	0.71	1.3	0.55	0.83	1.73
	MM	18	33	14	21	44
LDP-2-20	IN	0.79	1.38	0.63	0.83	1.81
	MM	20	35	16	21	46



ADD V SUFFIX FOR BREATHER HOLE

NY-PF

Nylon Push Fit Breathers

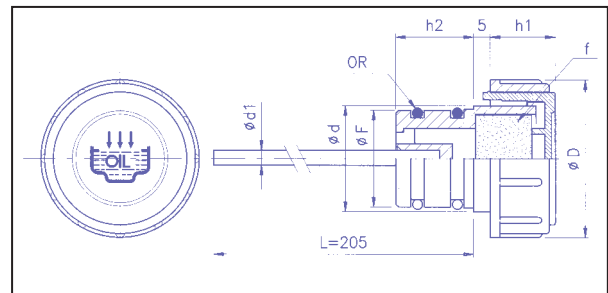
Specifications

- .7 in to 1.2 in. (18 to 30 mm) Push Fit Filter Filler Breathers
- Push fit breather with easy grip vertical ribs fit snugly into pre-drilled hole and seals by O Ring hole tolerance .003 in. (0.1mm)
- Thermoplastic Polyamide 66 Material
- Maximum Operating Temperature 250°F (100°C)
- Compatible with Petroleum Based Fluids, Gasoline, Fuel, and variety of Solvents
- Not compatible with Alcohol
- 10 or 40 micron polyurethane elements
- Buna Seals
- Anti splash option available
- Maximum Pressure 47 PSI (3 Bar)
- Optional steel plated dipstick available up to 7.9 inches (200 mm) and can be marked with min & max notches upon request



Dimensional Detail

MODEL NO.		F	D	d	hi	di	hz
NYPF-18	IN	0.71	1.42	0.91	0.67	0.2	0.79
	MM	18	36	23	17	5	20
NYPF-20	IN	0.79	1.42	0.94	0.67	0.16	0.75
	MM	20	36	24	17	4	19
NYPF-26	IN	1.02	1.61	1.1	0.67	0.16	0.83
	MM	26	41	28	17	4	21
NYPF-30	IN	1.18	1.85	1.3	0.67	0.16	0.83
	MM	30	47	33	17	4	21
NYPFV-18	IN	0.71	1.42	0.91	0.67	0.2	0.79
	MM	18	36	23	17	5	20
NYPFV-20	IN	0.79	1.42	0.94	0.67	0.16	0.75
	MM	20	36	24	17	4	19
NYPFV-26	IN	1.02	1.61	1.1	0.67	0.16	0.83
	MM	26	41	28	17	4	21



ADD AS - As prefix for Antisplash
ADD DIP Suffix for Dipstick

LDP

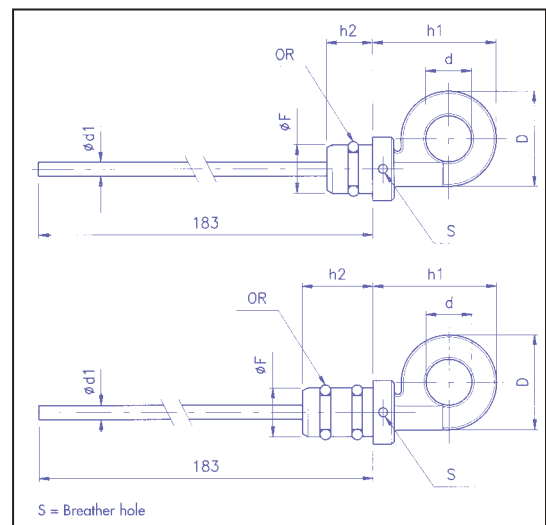
Eye Handle Dipsticks

- Eye handle steel plated dipsticks
- Handle material Thermoplastic Polyamide 66
- Starting chamfer is 45° degrees with hole tolerance .003 in. (.01 mm)
- Maximum Operating Temperature 250° F (100° C)
- Compatible with Petroleum Based Fluids, Gasoline, Fuel, and variety of Solvents
- Not compatible with Alcohol
- Optional breather hole available
- Buna Seals (one or two seals)
- Maximum length is 7.9 in. (200 mm)
- Maximum Pressure 47 PSI (3 Bar)
- Steel plated dipstick available up to 7.9 inches (200 mm) and can be marked with min & max notches upon request



Dimensional Detail

MODEL NO		F	D	d	H2	H1
LDP-1-14	IN	0.55	1.06	0.51	0.51	1.34
	MM	14	27	13	13	34
LDP-1-18	IN	0.71	1.26	0.55	0.67	1.77
	MM	18	32	14	17	45
LDP-1-20	IN	0.79	1.26	0.55	0.71	1.75
	MM	20	32	14	18	44.5
LDP-2-12	IN	0.47	1.18	0.55	0.79	1.42
	MM	12	30	14	20	36
LDP-2-14	IN	0.55	1.06	0.51	0.79	1.34
	MM	14	27	13	20	34
LDP-2-18	IN	0.71	1.3	0.55	0.83	1.73
	MM	18	33	14	21	44
LDP-2-20	IN	0.79	1.38	0.63	0.83	1.81
	MM	20	35	16	21	46



ADD V SUFFIX FOR BREATHER HOLE

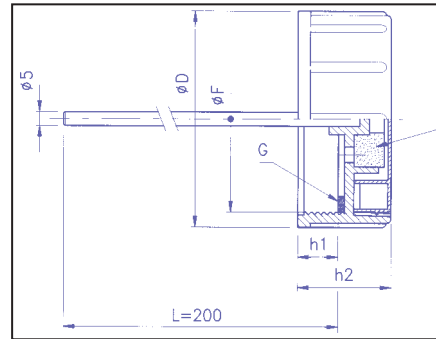


NY-LF2

Nylon Threaded Cap

Specifications

- 2 BSP Threaded Cap
- Thermoplastic Polyimide 66 Material
- Maximum Operating Temperature 250° F (100° C)
- Compatible with Petroleum Based Fluids, Gasoline, Fuel, and variety of Solvents
- Not compatible with Alcohol
- 40 micron polyurethane elements
- Buna Seals
- Safety chain available
- Optional Yellow Diesel Cap option available
- Maximum Pressure 47 PSI (3 Bar)
- Optional steel plated dipstick available up to 7.9 inches (200 mm) and can be marked with min & max notches upon request



Dimensional Detail

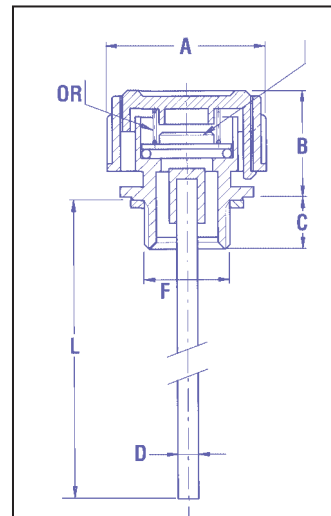
MODEL NO.	F	THREAD	D	H1	H2	G	F
NY-LF2	IN MM	2 67.5	2.7 15	0.6 30	1.2 Gasket	Buna Element	40 micron

NY-LVB

Nylon Vent Breathers

Specifications

- 1/4", 3/8", 1/2" NPT Vent Filler Breathers
- Valve Opens when pressure exceeds 4 PSI (.25 Bar) avoids loss of oil and valve allows excess pressure to escape
- Thermoplastic Polyimide 66 Material marked with check valve symbol
- Maximum Operating Temperature 250° F (100° C)
- Compatible with Petroleum Based Fluids, Gasoline, Fuel, and variety of Solvents
- Not compatible with Alcohol
- 10 or 40 micron polyurethane elements
- Buna Seals
- Anti splash option available
- Maximum Pressure 47 PSI (3 Bar)
- Optional steel plated dipstick available up to 7.9 inches (200 mm) and can be marked with min & max notches upon request



Dimensional Detail

MODEL NO.	F	OR	L	A	B	C	D
NY-LVB-4	IN	1/4"	4 PSI	7.7	1.2	0.8	0.5
	MM		0.3 Bar	195	30	21	12
NY-LVB-6	IN	3/8"	4 PSI	7.7	1.2	0.8	0.5
	MM		0.3 Bar	195	30	21	12
NY-LVB-8	IN	1/2"	4 PSI	7.7	1.2	0.8	0.6
	MM		0.3 Bar	195	30	21	14

ADD AS - As prefix for Antisplash
ADD DIP Suffix for Dipstick



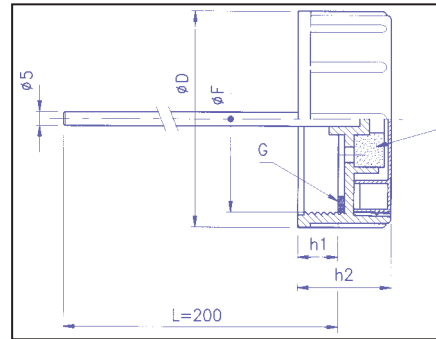


NY-LF2

Nylon Threaded Cap

Specifications

- 2 BSP Threaded Cap
- Thermoplastic Polyimide 66 Material
- Maximum Operating Temperature 250° F (100° C)
- Compatible with Petroleum Based Fluids, Gasoline, Fuel, and variety of Solvents
- Not compatible with Alcohol
- 40 micron polyurethane elements
- Buna Seals
- Safety chain available
- Optional Yellow Diesel Cap option available
- Maximum Pressure 47 PSI (3 Bar)
- Optional steel plated dipstick available up to 7.9 inches (200 mm) and can be marked with min & max notches upon request



Dimensional Detail

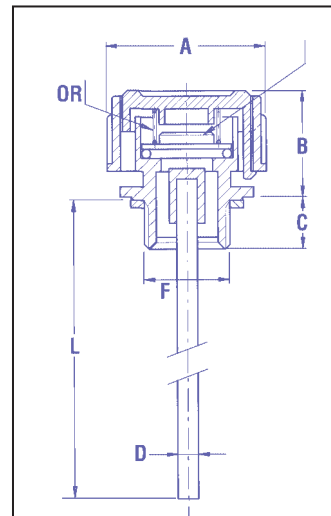
MODEL NO.	F	THREAD	D	H1	H2	G	F
NY-LF2	IN MM	2 67.5	2.7 15	0.6 30	1.2 Gasket	Buna Element	40 micron

NY-LVB

Nylon Vent Breathers

Specifications

- 1/4", 3/8", 1/2" NPT Vent Filler Breathers
- Valve Opens when pressure exceeds 4 PSI (.25 Bar) avoids loss of oil and valve allows excess pressure to escape
- Thermoplastic Polyimide 66 Material marked with check valve symbol
- Maximum Operating Temperature 250° F (100° C)
- Compatible with Petroleum Based Fluids, Gasoline, Fuel, and variety of Solvents
- Not compatible with Alcohol
- 10 or 40 micron polyurethane elements
- Buna Seals
- Anti splash option available
- Maximum Pressure 47 PSI (3 Bar)
- Optional steel plated dipstick available up to 7.9 inches (200 mm) and can be marked with min & max notches upon request



Dimensional Detail

MODEL NO.	F	OR	L	A	B	C	D
NY-LVB-4	IN	1/4"	4 PSI	7.7	1.2	0.8	0.5
	MM		0.3 Bar	195	30	21	12
NY-LVB-6	IN	3/8"	4 PSI	7.7	1.2	0.8	0.5
	MM		0.3 Bar	195	30	21	12
NY-LVB-8	IN	1/2"	4 PSI	7.7	1.2	0.8	0.6
	MM		0.3 Bar	195	30	21	14

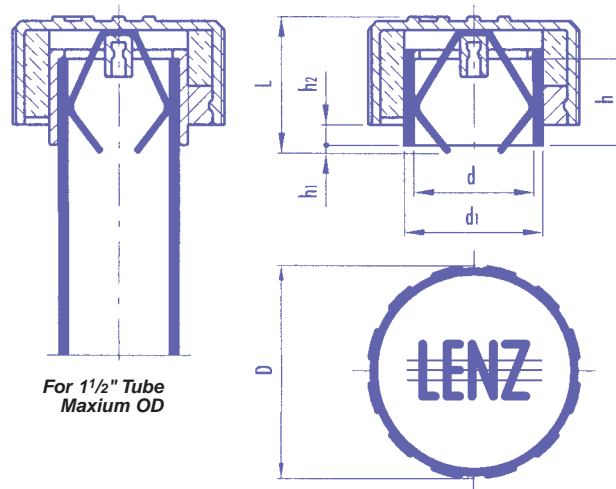
ADD AS - As prefix for Antisplash
ADD DIP Suffix for Dipstick



NYPO-24 Push on Breathers

Specifications

- Thermoplastic Polyamide 66 Material
- Maximum Operating temperature 250 degrees (100 C)
- Compatible with Petroleum Based Fluids, Gasoline, Grease
- Spring steel plated clip
- 10 or 40 micron polyurethane elements
- Maximum outside diameter 1.5" or 39 MM
- Optional dispstick available



Dimensional Detail

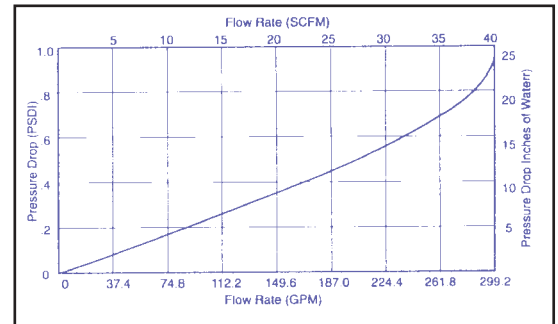
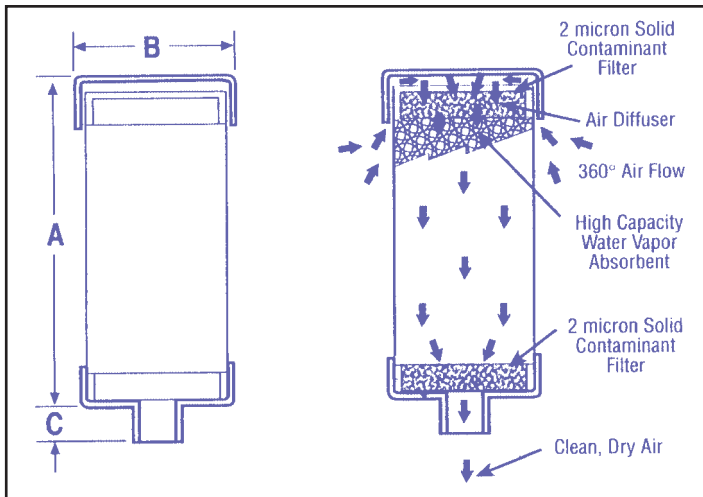
MODEL NO.		d	h	D	L	d1	h1	h2	LBS/GR
NYPO-24	IN	1.5	1.1	2.8	1.9	1.8	0.1	0.3	0.2
	MM	39	28	70	48	45	3	7	67



Desiccant Breathers

Model DB

- Construction: ABS plastic & impact-modified acrylic
- Removes corrosive water vapor
- Operating temp. range: -20° F to +200° F (-28° C to +93° C)
- Four standard sizes (3" to 10")
- Bi-directional air flow
- Silica gel turns from gold to green when maximum absorption is reached
- Dual filter system with anti-static guard
- Airflow: Standard 260 GPM
- 2 micron filtration
- Solid contaminant filtration surface area 20.6 in² (133 cm²)
- Silica gel absorbs up to 40% of its weight in water
- Resistant to alkalis, hydrocarbons, non-oxidizing acids, salt water, and synthetic oils
- Option: Activated charcoal media (consult factory)



Dimensional Detail

MODEL NO.	BREATHER CONNECTOR	MICRON RATING	CAPACITIES		MAX. H2O CAPACITY		A		B		C	
			CFM	GPM	LBS.	LTR.	IN.	CM.	IN.	CM.	IN.	CM.
DB-03	1 5/16" O.D. Tube	2	35	260	.2	.1	3.5	9.0	5	12.8	1.25	3.2
DB-05	1 5/16" O.D. Tube	2	35	260	.4	.2	5.0	12.8	5	12.8	1.25	3.2
DB-08	1 5/16" O.D. Tube	2	35	260	.9	.5	8.0	20.5	5	12.8	1.25	3.2
DB-10	2" NPT	2	66	500	1.3	.6	10.0	25.4	5	12.8	1.25	3.2

Note: Connector for sizes 3, 5 and 8 1 5/16" O.D. tube is designed to interface fit with an adapter on new installations – adapters need not be replaced

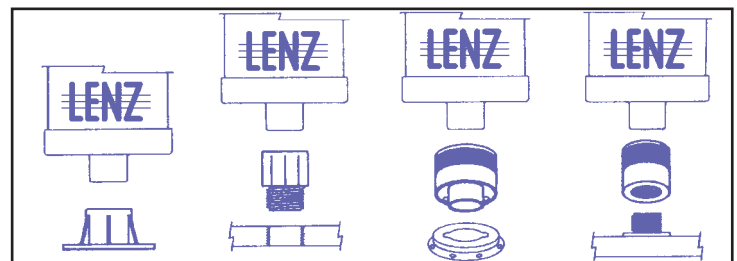
DB-FA
Flange
Adapter

DB-R1/2"
Threaded
Adapter

DB-BA
Bayonet
Adapter

DB-C1/2"
Spin-on
Adapter

MODEL NO.	DESCRIPTION
DB-BA	Bayonet Adapter
DB-C1	1"-12 UNF Female to Female Coupling
DB-C2	1 1/2"-16 UNF Female to Female Coupling
DB-FA	Flange Adapter
DB-R1	1" NPT Pipe Thread Reducer
DB-R2	3/4" NPT Pipe Thread Reducer
DB-R3	1/2" NPT Pipe Thread Reducer

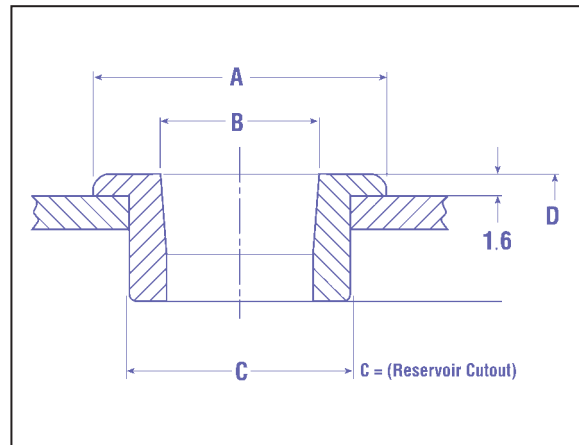


Rubber Bushings

LRB Series

- Nitrile Rubber
- 1/8" to 2" pipe and tube diameters
- Compatible with mineral & petroleum based fluids
- Available in packages of 10

A comprehensive range of rubber bushings designed to reduce vibration noise and seal pipes and tubes in the reservoir top plate. Do not use below the oil level.



Dimensional Detail

MODEL	B PIPE	B TUBE	B MM	A INS	MM	C INS	MM	D INS	MM	WEIGHT LBS	KG
LRB-2801		1/4"	6	1.2	30	0.7	18.3	0.7	18	0.02	0.007
LRB-2802			8	1.2	30	0.7	18.3	0.7	18	0.02	0.007
LRB-2803		3/8"		1.2	30	0.7	18.3	0.7	18	0.02	0.007
LRB-2804	1/8"		10	1.2	30	0.7	18.3	0.7	18	0.01	0.006
LRB-2805		1/2"	12	1.2	30	0.7	18.3	0.7	18	0.01	0.006
LRB-2806	1/4"		14	1.6	40	1.1	28.5	0.9	24	0.4	0.18
LRB-2807			15	1.6	40	1.1	28.5	0.9	24	0.37	0.17
LRB-2808		5/8"	16	1.6	40	1.1	28.5	0.9	24	0.35	0.16
LRB-2809		3/8"		1.6	40	1.1	28.5	0.9	24	0.35	0.16
LRB-2810			18	1.6	40	1.1	28.5	0.9	24	0.35	0.16
LRB-2811		3/4"		1.6	40	1.1	28.5	0.9	24	0.33	0.15
LRB-2812			20	1.6	40	1.1	28.5	0.9	24	0.29	0.13
LRB-2813	1/2"			1.6	40	1.1	28.5	0.9	24	0.26	0.12
LRB-2814		7/8"	22	1.6	40	1.1	28.5	0.9	24	0.26	0.12
LRB-2815			25	2.2	55	1.7	42.5	0.9	24	0.71	0.32
LRB-2816		3/4"		2.2	55	1.7	42.5	0.9	24	0.66	0.3
LRB-2817			28	2.2	55	1.7	42.5	0.9	24	0.64	0.29
LRB-2816			30	2.2	55	1.7	42.5	0.9	24	0.57	0.26
LRB-2819		1 1/4"		2.2	55	1.7	42.5	0.9	24	0.53	0.24
LRB-2820	1"			2.2	55	1.7	42.5	0.9	24	0.46	0.21
LRB-2821			35	2.2	55	1.7	42.5	0.9	24	0.4	0.18
LRB-2822		1 1/2"	38	2.8	70	2.3	58.5	0.9	24	1.32	0.6
LRB-2823			42	2.8	70	2.3	58.5	0.9	24	0.97	0.44
LRB-2824	1 1/4"			2.8	70	2.3	58.5	0.9	24	0.95	0.43
LRB-2825	1 1/2"			2.8	70	2.3	58.5	0.9	24	0.71	0.32
LRB-2826		2"	50	2.8	70	2.3	58.5	0.9	24	0.6	0.27
LRB-2827	2"			2.8	70	2.3	58.5	0.9	24	0.68	0.31



Tank Clean-out Covers

Model TC

MODEL		A	B	C	D	GASKET
TC-6	IN	6	4.3	0.4	14 GA.	TCG-6
	MM	152	109	10		
TC-12	IN	12	10	1.6	7 GA.	TCG-12
	MM	305	254	41		
TC-14	IN	14	12	2	7 GA.	TCG-14
	MM	356	305	51		
TC-18	IN	18	16	2.6	7GA.	TCG-18
	MM	457	406	66		

Lenz has introduced a new series of tank covers, "TC Series". The tank covers include seven models, ranging from a 6" to an 18" diameter. The TC Series tank covers are designed for ease of servicing hydraulic reservoirs through sidewall or through tank top.

Features Include:

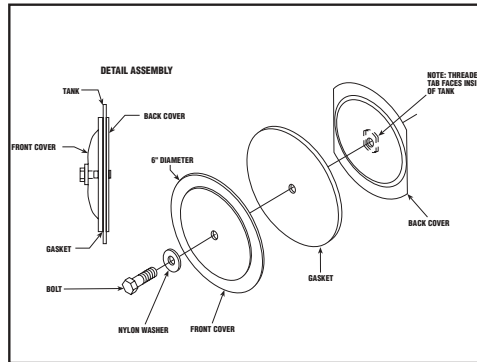
- Buna lip seal supplied
- Nylon crush washer supplied
- Zinc plated
- Heavy duty steel construction
- Durable no-leak gasket
- Quick easy access for cleaning and inspection
- For standard and fireproof hydraulic fluids
- Low cost
- Stocked for quick delivery

Options:

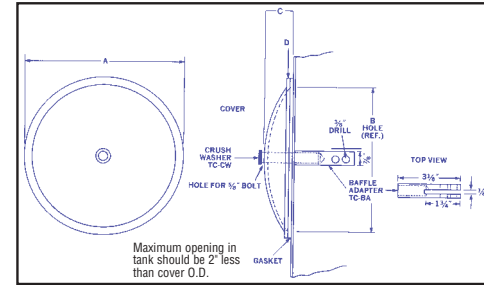
- 6", 12", 14", 18" Diameters
- Drain available – Add "D" to Model Number
- Stainless Steel – Add "SS" to Model Number
- TC-BA – Tank cover Baffle Adapter
- TC Bolt – 5/8"-11 Bolt (TC-BX"L") Specify length.



Drawing of TC-6



Drawing of TC-12



TC-BA Baffle Adapter is not included as part of the model numbers below. Order separately.

Magnetic Drain Plug

MDP Magnetic Drain Plug

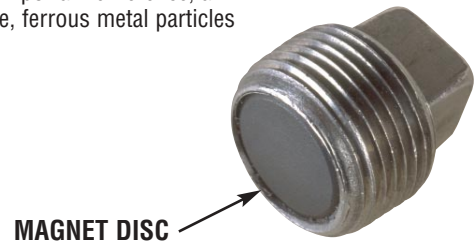
Models MDP Series

Lenz Magnet Plugs are similar to standard pipe or straight thread drain plugs with one important difference, a permanent magnet is fastened to the plug body. This magnet attracts and holds abrasive, ferrous metal particles preventing their circulation through the lubrication or hydraulic system.

These abrasive, ferrous metal particles appear in lubricating or hydraulic systems as a result of the following conditions:

- The constant flaking effect of normal wear of moving parts
- Particles not removed by flushing operations after boring or machining.
- Chipping due to sub-surface casting flaws.
- Minute component breakdown caused by stress usage.

Usually a combination of factors accounts for the presence of these particles that cause excessive wear to vital components unless they are removed. By holding these particles, Lenz Magnetic Drain Plugs prevent excessive wear to the system's components.



Dimensional Detail

Model Number	Nominal Pipe Size	Magnet Style & Style	A Overall Nominal Length in. mm	B Body Length in. mm	C Magnet Projection in. mm	D Head Size in. mm	E Head Depth in. mm	Body Material
MDP-4	1/4"	Bar Alnico V	.96 24	.45 11	.23 6	.37 9	.28 7	Steel
MDP-6	3/8"	Disc Ferrite	.80 20	.47 11	—	.43 11	.34 9	Steel
MDP-8	1/2"	Disc Ferrite	.96 24	.57 14	—	.56 14	.38 10	Steel
MDP-12	3/4"	Disc Ferrite	1.11 28	.62 15	—	.62 16	.45 11	Steel
MDP-16	1"	Disc Ferrite	1.52 38	.75 19	—	.81 21	.52 13	Mall. Iron





Tank Clean-out Covers

Model TC

MODEL		A	B	C	D	GASKET
TC-6	IN	6	4.3	0.4	14 GA.	TCG-6
	MM	152	109	10		
TC-12	IN	12	10	1.6	7 GA.	TCG-12
	MM	305	254	41		
TC-14	IN	14	12	2	7 GA.	TCG-14
	MM	356	305	51		
TC-18	IN	18	16	2.6	7GA.	TCG-18
	MM	457	406	66		

Lenz has introduced a new series of tank covers, "TC Series". The tank covers include seven models, ranging from a 6" to an 18" diameter. The TC Series tank covers are designed for ease of servicing hydraulic reservoirs through sidewall or through tank top.

Features Include:

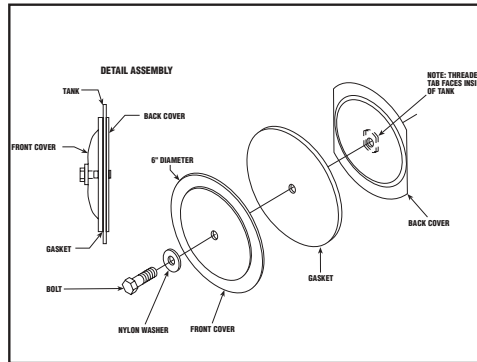
- Buna lip seal supplied
- Nylon crush washer supplied
- Zinc plated
- Heavy duty steel construction
- Durable no-leak gasket
- Quick easy access for cleaning and inspection
- For standard and fireproof hydraulic fluids
- Low cost
- Stocked for quick delivery

Options:

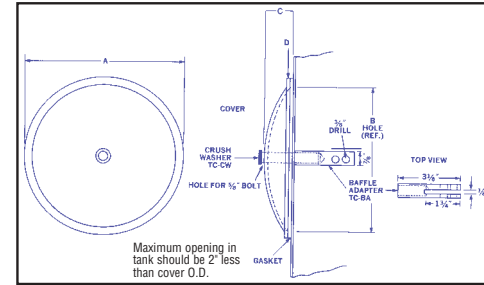
- 6", 12", 14", 18" Diameters
- Drain available – Add "D" to Model Number
- Stainless Steel – Add "SS" to Model Number
- TC-BA – Tank cover Baffle Adapter
- TC Bolt – 5/8"-11 Bolt (TC-BX"L") Specify length.



Drawing of TC-6



Drawing of TC-12



TC-BA Baffle Adapter is not included as part of the model numbers below. Order separately.

Magnetic Drain Plug

MDP Magnetic Drain Plug

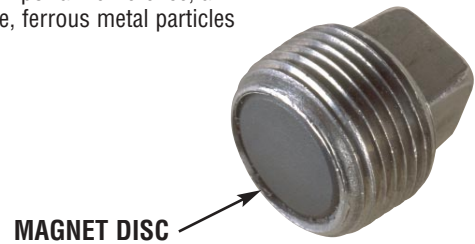
Models MDP Series

Lenz Magnet Plugs are similar to standard pipe or straight thread drain plugs with one important difference, a permanent magnet is fastened to the plug body. This magnet attracts and holds abrasive, ferrous metal particles preventing their circulation through the lubrication or hydraulic system.

These abrasive, ferrous metal particles appear in lubricating or hydraulic systems as a result of the following conditions:

- The constant flaking effect of normal wear of moving parts
- Particles not removed by flushing operations after boring or machining.
- Chipping due to sub-surface casting flaws.
- Minute component breakdown caused by stress usage.

Usually a combination of factors accounts for the presence of these particles that cause excessive wear to vital components unless they are removed. By holding these particles, Lenz Magnetic Drain Plugs prevent excessive wear to the system's components.



Dimensional Detail

Model Number	Nominal Pipe Size	Magnet Style & Style	A Overall Nominal Length in. mm	B Body Length in. mm	C Magnet Projection in. mm	D Head Size in. mm	E Head Depth in. mm	Body Material
MDP-4	1/4"	Bar Alnico V	.96 24	.45 11	.23 6	.37 9	.28 7	Steel
MDP-6	3/8"	Disc Ferrite	.80 20	.47 11	—	.43 11	.34 9	Steel
MDP-8	1/2"	Disc Ferrite	.96 24	.57 14	—	.56 14	.38 10	Steel
MDP-12	3/4"	Disc Ferrite	1.11 28	.62 15	—	.62 16	.45 11	Steel
MDP-16	1"	Disc Ferrite	1.52 38	.75 19	—	.81 21	.52 13	Mall. Iron





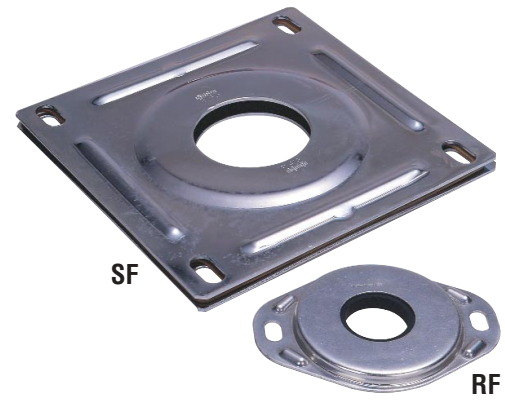
Reservoir Flanges

Suction and Return Line

Models SF & RF

Lenz Reservoir Flanges

Afford a leakproof seal for pipes or tubes passing through the reservoir top . . . keep fluid in, dirt out. No welding, no unions, and saves on piping assembly time. Both types come completely packaged with the parts as shown and with templates . . . ready for quick, easy installation. Meet ASA standards. They serve as economical inspection ports.



Suction Flanges

No. SF & SFO are designed for the suction pipe line of the reservoir. The parts are installed on the top of the tank as shown in the diagram, Figure 1. The larger models, SFO-24 to SFO-48, permit the use of filters larger than 4 1/2" in diameter*. All sizes allow the easy removal of suction strainers from ASA standard reservoirs.

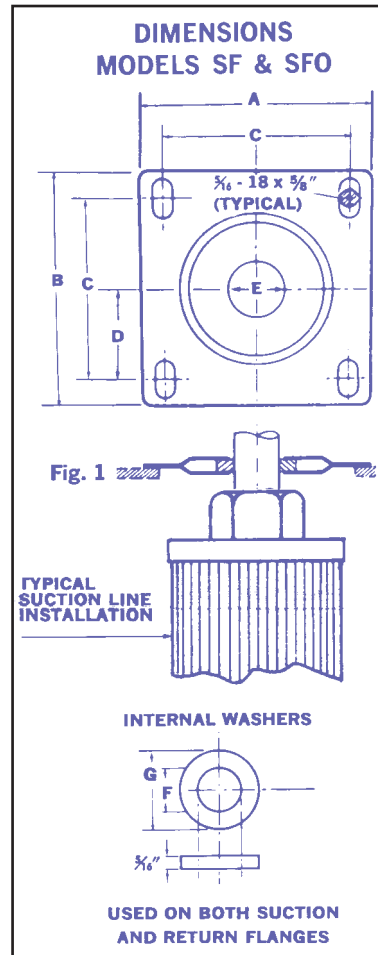
Return Line Flanges

No. RF Return Flanges are designed to accommodate the return pipe to the tank. The parts, as shown, are quickly and easily installed on the tank as shown in the diagram Figure 2. Range of model sizes and internal washer sizes are shown in table below in RF Models.

Dimensional Detail

SUCTION FLANGE	RETURN FLANGE		A	B	C	D	E	F	G
SF-8	RF-8	IN	5.3	5.5	4.3	2.1	1.4	0.8	3
		MM	135	140	109	53	36	20	76
SF-12	RF-12	IN	5.3	5.5	4.3	2.1	1.4	1	3
		MM	135	140	109	53	36	25	76
SF-16	RF-16	IN	5.3	5.5	4.3	2.1	1.4	1.3	3
		MM	135	140	109	53	36	33	76
SF-20	RF-20	IN	5.3	5.5	4.3	2.1	2	1.7	3
		MM	135	140	109	53	51	43	76
SF-24		IN	5.3	5.5	4.3	2.1	2	1.7	3
		MM	135	140	109	53	51	43	76
SFO-24	RF-24	INN	7.3	7.5	6.3	3.1	2	1.9	3
		MM	185	191	160	79	51	48	76
SFO-32	RF-32	IN	7.3	7.5	6.3	3.1	2.5	2.3	3
		MM	185	191	160	79	64	58	76
SFO-40	RF-40	IN	7.3	7.5	6.3	3.1	3	2.8	4.25
		MM	185	191	160	79	76	71	108
SFO-48	RF-48	IN	7.3	7.5	6.3	3.1	3.8	3.5	4.25
		MM	185	191	160	79	97	89	108

*SF Models permit use of sump strainers up to 4 1/2" in diameter.
SFO Models permit use of sump strainers up to 6 1/2" in diameter.



Return Flange Model RF

Supplied with Self-Tapping Screws and Washers

Flange Plate Internal Washer

Dimensions Model RF

Fig. 2

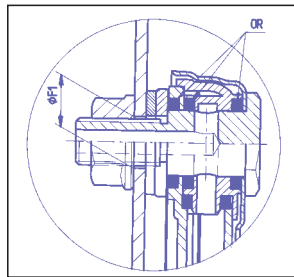
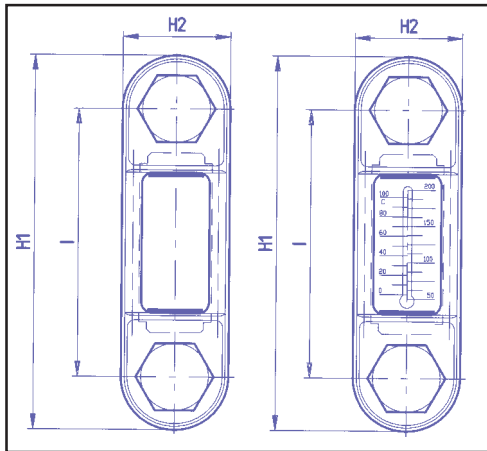




Sight level Gauge

LLG & T-LLG

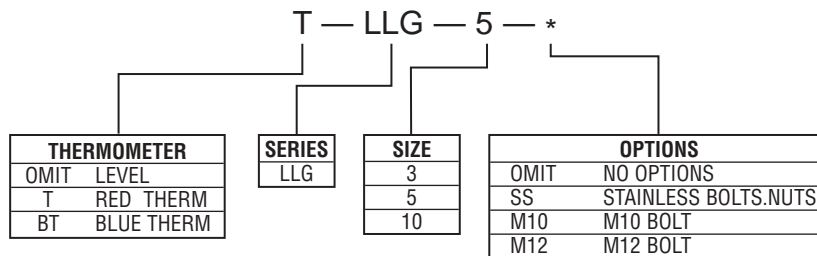
- 3, 5, 10 in. (75, 127, 254 mm) mounting center transparent Oil Level Indicator with guard
- Transparent Polyimide Resin Material
- Guard is steel with black finish
- Maximum Operating Temperature 250°F (100°C)
- Compatible with Petroleum Based Fluids, Gasoline, Fuel, and variety of Solvents
- Not compatible with Alcohol
- 1/2-13 UNC or (10 mm, 12 mm) bolt threads available
- Maximum Pressure 47 PSI (3 Bar)
- Nitrile Seal
- T-LLG includes standard red thermometer or optional blue thermometer is available
- Stainless steel hardware is available



Dimensional Detail

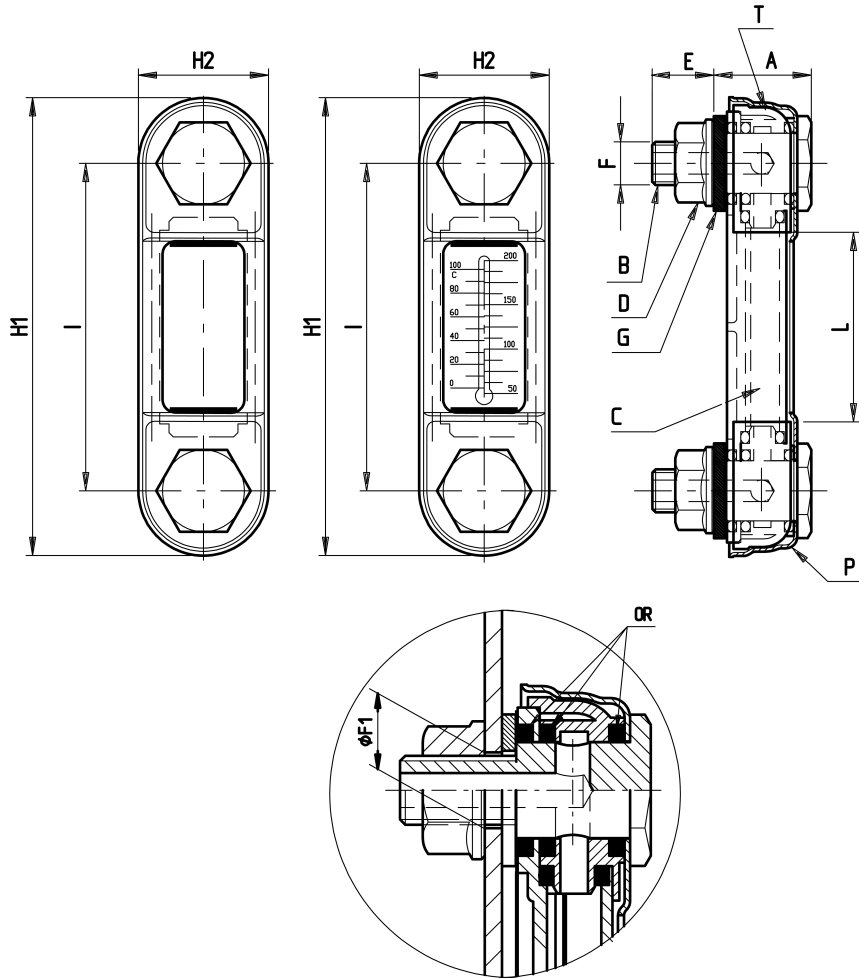
MODEL	I		H1	H2	D DRILL	BOLT		E	A	L	BOLT TORQUE
	IN	MM				F	M				
LLG-3, T-LLG-3	IN	3	4.2	1.2	13/64 (13)	1/2-13	0.8	0.8	1.5	11-12.4 FT-LBS	
	MM	76	107	31	10.2, 12.2 MM	M10, M12	20	21	39	15-17 NM	
LLG-5, T-LLG-5	IN	5	6.1	1.2	13/64 (13)	1/2-13	0.8	0.8	3.5	11-12.4 FT-LBS	
	MM	127	156	31	10.2, 12.2 MM	M10, M12	20	21	90	15-17NM	
LLG-10, T-LLG-10	IN	10	11.1	1.3	13/64 (13)	1/2 13	0.8	1.2	7.9	11-12.4 FT.-LBS	
	MM	254	283	34	10.2, 12.2 MM	M12	18	32	200	15-17NM	

Ordering Code





LLG & T-LLG Sight Level Gauge Instructions



SIGHT GAUGE MODEL	DIMENSIONS IN INCHES (AND MILLIMETERS)							
	I	H1	H2	F	E	A	L	F1 DRILL
LLG-3/T-LLG-3	3" (76)	4.21 (107)	1.22 (31)	1/2"-13	.80 (20)	.82 (21)	1.54 (39)	31/64" (13)
LLG-5/T-LLG-5	5" (127)	6.14 (156)	1.22 (31)	1/2"-13	.80 (20)	.82 (21)	3.54 (90)	31/64" (13)
LLG-10/T-LLG-10	10" (254)	11.14 (283)	1.34 (34)	1/2"-13	.70 (18)	1.26 (32)	7.87 (200)	31/64" (13)

- C= Transparent Body
- G= Black Buffer Seal
- OR= "O"-Ring
- B= 1/2"-13 Hollow Bolt (M10/M12 optional)
- D= Hex Jam Nut
- T= Transparent End Cap
- P= Black Metal Guard

Mounting Instructions:

Model LLG & T-LLG sight level gauges can be mounted on reservoirs, by either bolting on drilled holes or installed externally on tapped centers (**I**). Drill holes according to size and outlined in table (**I**) according to the sight gauge size. Mount with parts located as shown. Whenever possible, hold outside hex bolt head (**B**) with box wrench and tighten the hex jam nut (to maximum 11-12 ft. lbs.) (**D**). Bolts are furnished standard in a length suitable for most tank walls. Metric bolts can be furnished upon request (M10/M12 optional).

Fluid Level Sight Gauges

Sealed Back

Model 550/T-550

3 Sizes (3 1/4", 5" & 7" center to center)

Models 550 - 3 1/4", 5" & 7" body frames are of heavy aluminum alloy with flat black finish. Jam nuts and flat washers are steel; hollow mounting bolts are carbon steel, zinc plated and furnished for 1/4" thick reservoir walls. Special longer hollow bolts can be furnished on request for 7/8" & 1 1/2" thick walls. (12mm & 3/8"-24 bolts available) Stainless steel bolts available upon request.

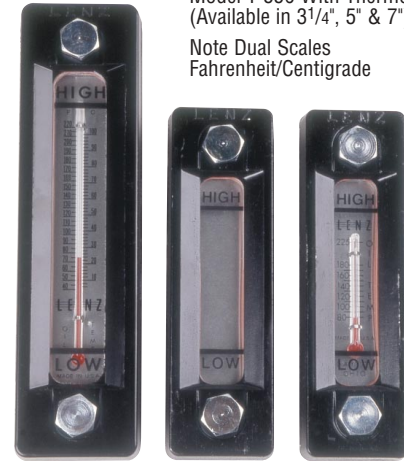
Standard 550 and T-550 models have 70 durometer buna - N, O-Ring Seals, silicone gaskets, tempered glass window and brushed aluminum backgrounds. They are for use with petroleum products, oil-water emulsions, and glycol-water solutions where temperatures do not exceed 200°F. Where the fluids used in the sight gauge is not known, we can furnish Viton O-rings (at additional cost).

T-550PE-5 Example:

(ethylene-propylene for phosphate ester base fluids)

Model T-550 With Thermometer
(Available in 3 1/4", 5" & 7")

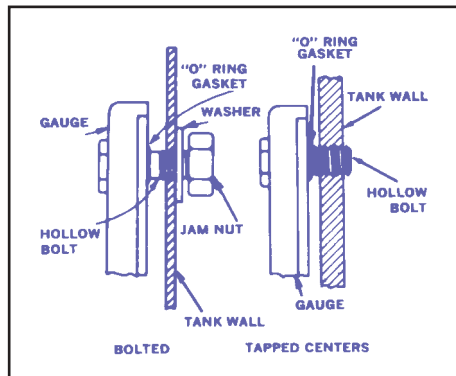
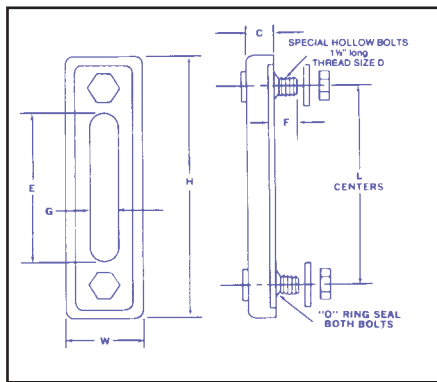
Note Dual Scales
Fahrenheit/Centigrade



T-550-7

550-5

T-550-5

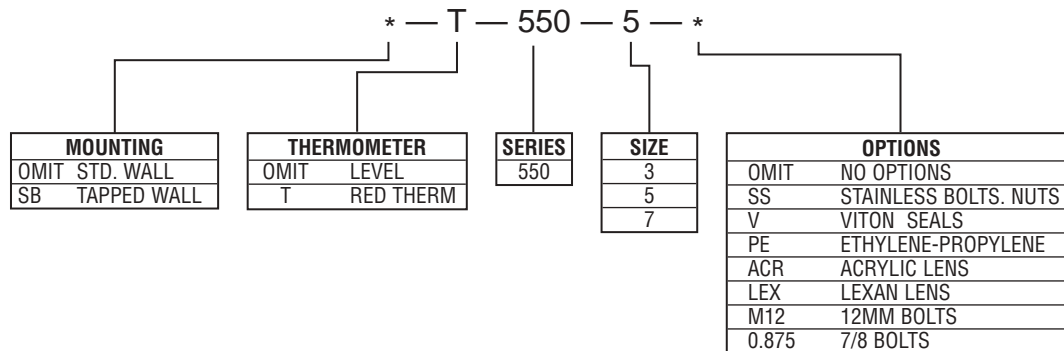


Note* When ordering for tapped tank wall, add "SB" to part number Ex: SB-T-550-5

Dimensional Detail

STANDARD MODELS	THERMOMETER MODELS	DIMENSIONS IN INCHES								
			L	H	W	C	D	E	F	G
550-3	T-550-3	IN	3.3	4.8	2	0.7	1/2-13 UNC-2	2.2	0.8	0.8
		MM	84	122	51	18		56	20	20
550-5	T-550-5	IN	5	6.6	2	0.7	1/2-13 UNC-2	3.9	0.8	0.8
		MM	127	168	51	18		99	20	20
550-7	T-550-7	IN	7	8.6	2.3	0.8	1/2-13 UNC-2	5.9	0.7	1
		MM	178	218	58	20		150	18	25

Ordering Code





Fluid Level Sight Windows

LSW

Lenz Fluid Level Sight Windows are designed for quick visual inspection and can be used to show presence of oil in gear cases, bearing housings, or can be used to indicate liquid level in reservoirs. These observation windows allow to check mechanism functions in sealed chambers as well as in hydraulic lines to monitor fluid flow and condition.

Reflectors (optional) show the fluid level and conditions clearly from a distance or when dimly lit. Float Ball (optional) show the movement of oil. Stainless (optional)

Lenz Fluid Level Sight Glass Windows are offered in the following sizes: 1/4" through 2" N.P.T. and 3/4"-16 through 1 7/8"-12 S.A.E. Rated at 250° F



NPT THREADS

Dimensional Detail

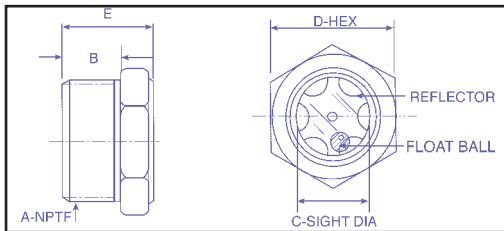
OPEN VIEW	WITH REFLECTOR	REFLECTOR BALL		A	B	C	D	E	MAX PRESS PSI/BAR
LSW-6	LSW-6-R	LSW-6-RB	IN MM	3/8"	0.5 13	0.4 11	0.8 20	0.9 23	500 35
LSW-8	LSW-8-R	LSW-8-RB	IN MM	1/2"	0.7 18	0.6 15	0.9 23	1 25	500 35
LSW-12	LSW-12-R	LSW-12-RB	IN MM	3/4"	0.7 18	0.8 20	1.1 28	1 25	500 35
LSW-16	LSW-16-R	LSW-16-RB	IN MM	1"	0.8 20	1 25	1.4 36	1.2 30	500 35
LSW-20	LSW-20-R	LSW-20-RB	IN MM	1 1/4"	0.9 23	1.1 28	1.4 36	1.4 36	500 35
LSW-24	LSW-24-R	LSW-24-RB	IN MM	1 1/2"	0.9 23	1.4 36	1.5 38	1.5 38	500 35
LSW-32	LSW-32-R	LSW-32-RB	IN MM	2"	0.9 23	1.9 48	1.7 43	1.7 43	500 35

SAE THREADS

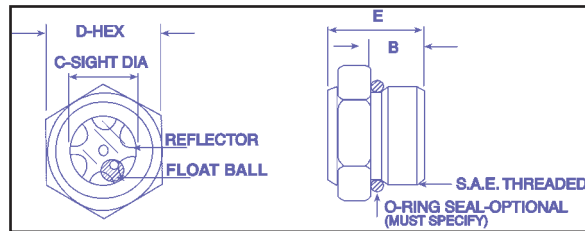
Dimensional Detail

OPEN VIEW	WITH REFLECTOR	REFLECTOR BALL		A	B	C	D	E	MAX PRESS PSI/BAR
LSW-A8	LSW-A8-R	LSW-A8-RB	IN MM	3/4"-16 S A E	0.4 10	0.5 13	0.9 23	0.9 23	500 35
LSW-A12	LSW-A12-R	LSW-A12-RB	IN MM	1 1/16" -12 SAE	0.6 15	1 25	1.3 33	1.1 28	500 35
LSW-A16	LSW-A16-R	LSW-A16-RB	IN MM	1 5/16"-12 SAE	0.6 15	1 25	1.5 38	1.8 46	500 35
LSW-A20	LSW-A20-R	LSW-A20-RB	IN MM	1 5/8"-12 SAE	0.6 15	1.4 36	2 51	1.2 30	500 35
LSW-A24	LSW-A24-R	LSW-A24-RB	IN MM	1 7/8"-12 SAE	0.8 20	1.5 38	2 51	1.2 30	500 35

NPT



SAE

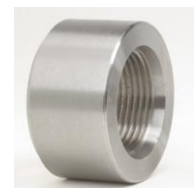
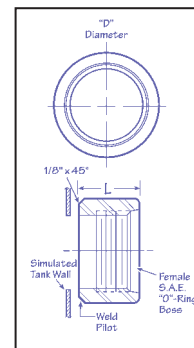


"LW-BA" WELD ADAPTERS

FEMALE S.A.E. "O-RING" WELD Adapter

LENZ "LW-BA" WELD ADAPTERS are designed and machined with a pilot to accurately position the adapter to the hole opening for welding flush to the outside of the tank. The Weld Adapter is a female S.A.E. O-ring connector for Lenz S.A.E. male straight thread fittings or any other Lenz hydraulic component with a male S.A.E. straight thread, making for a leak-free installation.

PART NUMBER	STAINLESS STEEL	FEMALE S.A.E.	L +.03	D DIA.
LW-BA-6	LW-BA-6-SS	9/16"-18	.70	.875
LW-BA-8	LW-BA-8-SS	3/4"-16	.85	1.125
LW-BA-10	LW-BA-10-SS	7/8"-14	.95	1.375
LW-BA-12	LW-BA-12-SS	1 1/16"-12	.95	1.375
LW-BA-14	LW-BA-14-SS	1 3/16"-12	1.1	1.625
LW-BA-16	LW-BA-16-SS	1 5/16"-12	1.1	1.625
LW-BA-20	LW-BA-20-SS	1 5/8"-12	1.1	2.125
LW-BA-24	LW-BA-24-SS	1 7/8"-12	1.1	2.50
LW-BA-32	LW-BA-32-SS	2 1/2"-12	1.2	3.00





Fluid Level Sight Windows

LSW

Lenz Fluid Level Sight Windows are designed for quick visual inspection and can be used to show presence of oil in gear cases, bearing housings, or can be used to indicate liquid level in reservoirs. These observation windows allow to check mechanism functions in sealed chambers as well as in hydraulic lines to monitor fluid flow and condition.

Reflectors (optional) show the fluid level and conditions clearly from a distance or when dimly lit. Float Ball (optional) show the movement of oil. Stainless (optional)

Lenz Fluid Level Sight Glass Windows are offered in the following sizes: 1/4" through 2" N.P.T. and 3/4"-16 through 1 7/8"-12 S.A.E. Rated at 250° F



NPT THREADS

Dimensional Detail

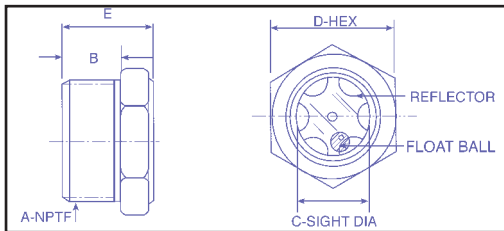
OPEN VIEW	WITH REFLECTOR	REFLECTOR BALL		A	B	C	D	E	MAX PRESS PSI/BAR
LSW-6	LSW-6-R	LSW-6-RB	IN MM	3/8"	0.5 13	0.4 11	0.8 20	0.9 23	500 35
LSW-8	LSW-8-R	LSW-8-RB	IN MM	1/2"	0.7 18	0.6 15	0.9 23	1 25	500 35
LSW-12	LSW-12-R	LSW-12-RB	IN MM	3/4"	0.7 18	0.8 20	1.1 28	1 25	500 35
LSW-16	LSW-16-R	LSW-16-RB	IN MM	1"	0.8 20	1 25	1.4 36	1.2 30	500 35
LSW-20	LSW-20-R	LSW-20-RB	IN MM	1 1/4"	0.9 23	1.1 28	1.4 36	1.4 36	500 35
LSW-24	LSW-24-R	LSW-24-RB	IN MM	1 1/2"	0.9 23	1.4 36	1.5 38	1.5 38	500 35
LSW-32	LSW-32-R	LSW-32-RB	IN MM	2"	0.9 23	1.9 48	1.7 43	1.7 43	500 35

SAE THREADS

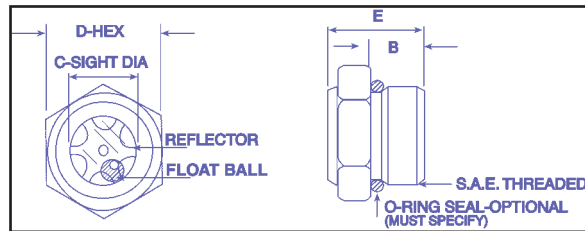
Dimensional Detail

OPEN VIEW	WITH REFLECTOR	REFLECTOR BALL		A	B	C	D	E	MAX PRESS PSI/BAR
LSW-A8	LSW-A8-R	LSW-A8-RB	IN MM	3/4"-16 S A E	0.4 10	0.5 13	0.9 23	0.9 23	500 35
LSW-A12	LSW-A12-R	LSW-A12-RB	IN MM	1 1/16" -12 SAE	0.6 15	1 25	1.3 33	1.1 28	500 35
LSW-A16	LSW-A16-R	LSW-A16-RB	IN MM	1 5/16"-12 SAE	0.6 15	1 25	1.5 38	1.8 46	500 35
LSW-A20	LSW-A20-R	LSW-A20-RB	IN MM	1 5/8"-12 SAE	0.6 15	1.4 36	2 51	1.2 30	500 35
LSW-A24	LSW-A24-R	LSW-A24-RB	IN MM	1 7/8"-12 SAE	0.8 20	1.5 38	2 51	1.2 30	500 35

NPT



SAE

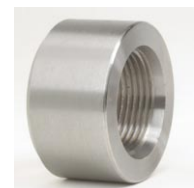
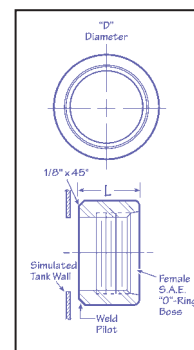


"LW-BA" WELD ADAPTERS

FEMALE S.A.E. "O-RING" WELD Adapter

LENZ "LW-BA" WELD ADAPTERS are designed and machined with a pilot to accurately position the adapter to the hole opening for welding flush to the outside of the tank. The Weld Adapter is a female S.A.E. O-ring connector for Lenz S.A.E. male straight thread fittings or any other Lenz hydraulic component with a male S.A.E. straight thread, making for a leak-free installation.

PART NUMBER	STAINLESS STEEL	FEMALE S.A.E.	L +.03	D DIA.
LW-BA-6	LW-BA-6-SS	9/16"-18	.70	.875
LW-BA-8	LW-BA-8-SS	3/4"-16	.85	1.125
LW-BA-10	LW-BA-10-SS	7/8"-14	.95	1.375
LW-BA-12	LW-BA-12-SS	1 1/16"-12	.95	1.375
LW-BA-14	LW-BA-14-SS	1 3/16"-12	1.1	1.625
LW-BA-16	LW-BA-16-SS	1 5/16"-12	1.1	1.625
LW-BA-20	LW-BA-20-SS	1 5/8"-12	1.1	2.125
LW-BA-24	LW-BA-24-SS	1 7/8"-12	1.1	2.50
LW-BA-32	LW-BA-32-SS	2 1/2"-12	1.2	3.00



Oil Level Indicators

LSG, LSGR

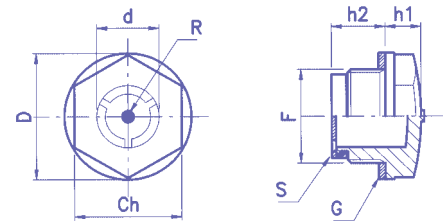
- Hex Head Transparent Oil Level Indicator
- Transparent Polyimide Material
- Maximum Operating Temperature 250°F (100°C)
- Compatible with Petroleum Based Fluids, Gasoline, Fuel, and variety of Solvents
- Not compatible with Alcohol
- NPT and SAE Threads available
- Maximum Pressure 47 PSI (3 Bar)
- Nitrile Seal
- Central Red indicator Point
- Contrast reflector available
- Locknut available for mounting on reservoirs less than .2 inches wall thickness



Dimensional Detail

Model		THREAD F	HEX CH	D	d	h1	h2	TORQUE FTLB-NM	LOCKNUT OD	WEIGHT LB-GM
LSG-4-R	IN	1/4" BSP	0.7	0.8	0.6	0.3	0.3	3	.8	0.007
	MM		17	20	15	7	8	4	19	3
LSG-6-R	IN	3/8" BSP	0.7	0.9	0.6	0.3	0.4	3	0.8	0.009
	MM		18	22	14	6.5	10.5	4	19	4
LSG-8-R	IN	1/2" BSP	0.9	1.1	0.6	0.3	0.4	6	1	0.011
	MM		28	16	8	11	12	8	26	
LSG-12-R	IN	3/4" NPT	0.9	1.1	0.9	0.3	0.6	7.5		0.018
	MM		24	24	7	15		10		
LSG-A12-R	MM	3/4" SAE	0.9	1.4	0.8	0.3	0.6	7.5	1.4	0.018
	MM		24	21	8	7	11	10	36	
LSG-16-R	IN	1" NPT	1.2	1.4	1.2	0.7	0.6	9		0.026
	MM		30	36	29.5	18.5	14.5	12		12
LSG-A16-R	IN	1" SAE	1.2	1.4	0.8	0.3	0.7	9	1.6	0.026
	MM		30	36	21	8	17	12	41	12
LSG-20-R	IN	1 1/4" NPT	1.4	1.7	1.5	0.9	0.4	11		0.044
	MM		36	42	37.5	23	11	15		20
LSG-24-R	IN	1 1/2" BSP	2	2.3	1.6	0.4	0.8	11	2.2	0.044
	MM		50	58	40	10	20	15	56	20
LSG-32-R	IN	2" BSP	2.5	2.9	1.9	0.5	0.8	11	2.6	0
	MM		64	74	48	12	20	15	65	20
LSG-M18	IN	M18X1.5	1	0.6	0.3	0.4	0.4	7.7		0.011
	MM		25	16	7	10.5	10	10		5

ADD L SUFFIX FOR LOCKNUT ON SIZE, 6, 8



LSD

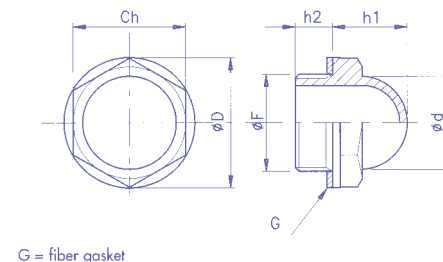
Domed Oil Sights

- Domed Shaped Transparent Oil Level Indicator
- Transparent Polyimide Material
- Maximum Operating Temperature 250°F (100°C)
- Compatible with Petroleum Based Fluids, Gasoline, Fuel, and variety of Solvents
- Not compatible with Alcohol
- NPT and SAE Threads available
- Maximum Pressure 47 PSI (3 Bar)
- Nitrile Seal
- Central Red indicator Point
- Locknut available for mounting on reservoirs less than .2 inches wall thickness



Dimensional Detail

MODEL		F	CH	D	d	H1	H2	TORQUE LB-FT/NM	WEIGHT LB/GM
LSD-6	IN	3/8" BSP	0.7	0.9	0.6	0.6	0.4	6	0.009
	MM		19	22	15	16	10	8	4
LSD-8	IN	1/2" BSP	0.9	1.1	0.8	0.7	0.4	9	0.011
	MM		24	28	20	17	10	12	5
LSD-12	IN	3/4" BSP	1.2	1.4	1	0.8	0.4	12	0.018
	MM		30	35	25	20	10	16	8
LSD-16	IN	1" BSP	1.4	1.7	1.2	0.9	0.4		0.04
	MM		36	42	31	24	10.5		18



G = fiber gasket

Oil Level Indicators

LSG, LSGR

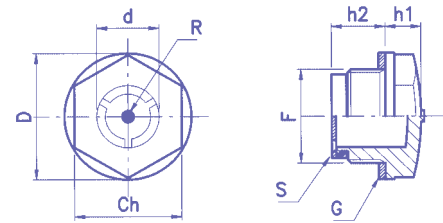
- Hex Head Transparent Oil Level Indicator
- Transparent Polyimide Material
- Maximum Operating Temperature 250°F (100°C)
- Compatible with Petroleum Based Fluids, Gasoline, Fuel, and variety of Solvents
- Not compatible with Alcohol
- NPT and SAE Threads available
- Maximum Pressure 47 PSI (3 Bar)
- Nitrile Seal
- Central Red indicator Point
- Contrast reflector available
- Locknut available for mounting on reservoirs less than .2 inches wall thickness



Dimensional Detail

Model		THREAD F	HEX CH	D	d	h1	h2	TORQUE FTLB-NM	LOCKNUT OD	WEIGHT LB-GM
LSG-4-R	IN	1/4" BSP	0.7	0.8	0.6	0.3	0.3	3	.8	0.007
	MM		17	20	15	7	8	4	19	3
LSG-6-R	IN	3/8" BSP	0.7	0.9	0.6	0.3	0.4	3	0.8	0.009
	MM		18	22	14	6.5	10.5	4	19	4
LSG-8-R	IN	1/2" BSP	0.9	1.1	0.6	0.3	0.4	6	1	0.011
			28	16	8	11	12	8	26	
LSG-12-R	IN	3/4" NPT	0.9	1.1	0.9	0.3	0.6	7.5		0.018
			24	24	7	15		10		
LSG-A12-R	MM	3/4" SAE	0.9	1.4	0.8	0.3	0.6	7.5	1.4	0.018
			24	21	8	7	11	10	36	
LSG-16-R	IN	1" NPT	1.2	1.4	1.2	0.7	0.6	9		0.026
	MM		30	36	29.5	18.5	14.5	12		12
LSG-A16-R	IN	1" SAE	1.2	1.4	0.8	0.3	0.7	9	1.6	0.026
	MM		30	36	21	8	17	12	41	12
LSG-20-R	IN	1 1/4" NPT	1.4	1.7	1.5	0.9	0.4	11		0.044
	MM		36	42	37.5	23	11	15		20
LSG-24-R	IN	1 1/2" BSP	2	2.3	1.6	0.4	0.8	11	2.2	0.044
	MM		50	58	40	10	20	15	56	20
LSG-32-R	IN	2" BSP	2.5	2.9	1.9	0.5	0.8	11	2.6	0
	MM		64	74	48	12	20	15	65	20
LSG-M18	IN	M18X1.5	1	0.6	0.3	0.4	0.4	7.7		0.011
	MM		25	16	7	10.5	10	10		5

ADD L SUFFIX FOR LOCKNUT ON SIZE, 6, 8



LSD

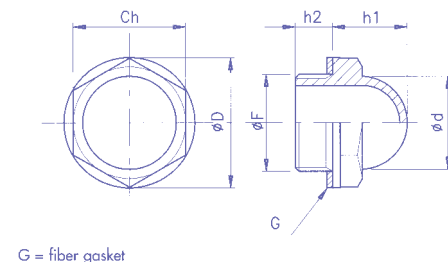
Domed Oil Sights

- Domed Shaped Transparent Oil Level Indicator
- Transparent Polyimide Material
- Maximum Operating Temperature 250°F (100°C)
- Compatible with Petroleum Based Fluids, Gasoline, Fuel, and variety of Solvents
- Not compatible with Alcohol
- NPT and SAE Threads available
- Maximum Pressure 47 PSI (3 Bar)
- Nitrile Seal
- Central Red indicator Point
- Locknut available for mounting on reservoirs less than .2 inches wall thickness



Dimensional Detail

MODEL		F	CH	D	d	H1	H2	TORQUE LB-FT/NM	WEIGHT LB/GM
LSD-6	IN	3/8" BSP	0.7	0.9	0.6	0.6	0.4	6	0.009
	MM		19	22	15	16	10	8	4
LSD-8	IN	1/2" BSP	0.9	1.1	0.8	0.7	0.4	9	0.011
	MM		24	28	20	17	10	12	5
LSD-12	IN	3/4" BSP	1.2	1.4	1	0.8	0.4	12	0.018
	MM		30	35	25	20	10	16	8
LSD-16	IN	1" BSP	1.4	1.7	1.2	0.9	0.4		0.04
	MM		36	42	31	24	10.5		18



G = fiber gasket



Magnetic Tank Cleaners

Multi Magnet Standard or Heavy Duty

Lenz magnetic tank cleaners pick up material that ordinary filters miss and thus maintain cleaner oil. The cleaner the oil; the less problems and expense incurred.

Exceptionally efficient, each unit is composed of a large ceramic magnet and two circular pole pieces.

Multi-magnet tank cleaners come in two models; standard and heavy-duty. Heavy-duty is recommended when support rods are long, power units are large or shipping abuse is anticipated. Although the magnetic unit is the same, heavy-duty is manufactured with a 5/8" solid steel support rod while the standard tank cleaner contains a 1/8" pipe size support rod.

To clean, simply use ordinary air hose using compressed air.

Order pipe plugs separately. Pipe plugs are optional and are furnished in 2 1/2" size. The minimum opening that will accommodate the unit is 2" pipe size or a hole approximately 2 1/4" in diameter. If desired, it can be installed in the cover of any opening larger than this.

Optional: Plug Part No. 40P (For Standard Rod)
HD40P (For Heavy Duty Rod)

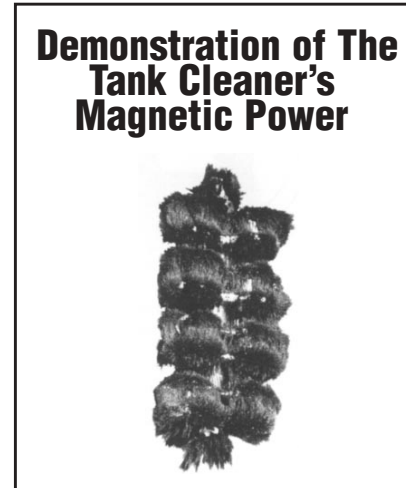
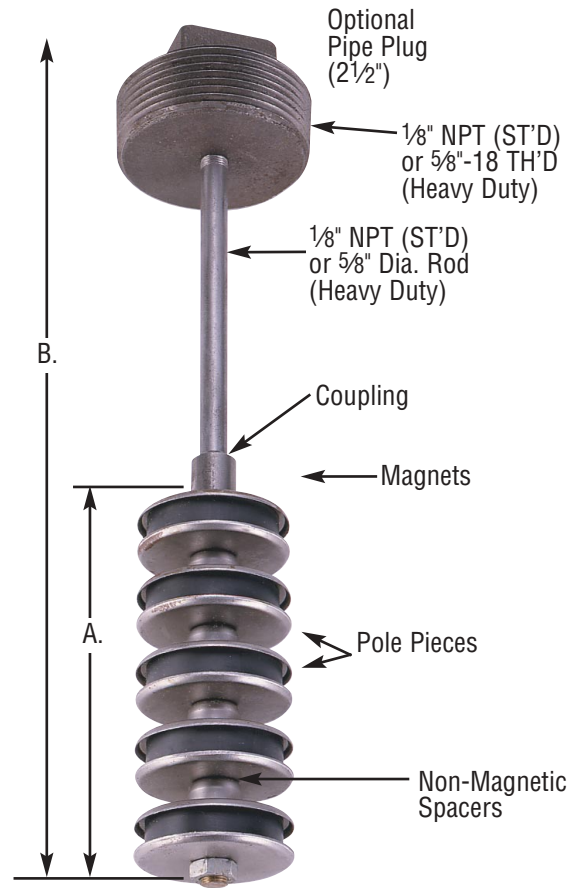
Note**Special Rod Lengths Available

Standard Multi-Magnet 1000 Series

MODEL NO.		A	B	RESEVOIR CAPACITY
1001	IN	1.6	6.6	0-10
	MM	41	168	
1002	IN	2.7	7.7	10-30
	MM	69	196	
1003	IN	3.8	8.8	30-60
	MM	97	224	
1004	IN	4.8	9.8	60-100
	MM	122	249	
1005	IN	5.9	10.9	100-150
	MM	150	277	
1006	IN	7	12	150-210
	MM	178	305	
1007	IN	8	13	210-280
	MM	203	330	
1008	IN	9.1	14.1	280-350
	MM	231	358	

Heavy Duty Multi-Magnet 2000 Series

MODEL NO.		A	B	RESEVOIR CAPACITY
2001	IN	0.8	5.8	0-10
	MM	20	147	
2002	IN	2	7	10-30
	MM	51	178	
2003	IN	3	8	30-60
	MM	76	203	
2004	IN	4.1	9.1	60-100
	MM	104	231	
2005	IN	5.3	10.3	100-150
	MM	135	262	
2006	IN	6.2	11.2	150-210
	MM	157	284	
2007	IN	7.3	12.3	210-280
	MM	185	312	
2008	IN	8.3	13.3	280-350
	MM	211	338	





Slim Line Magnet Tank Cleaners

In-Line Magnets Standard or Heavy-Duty

The primary difference between slim line and regular tank cleaners is in the smaller diameter of the slim line. Capable of being inserted into a hole tapped for a 3/4" plug, the cleaner is especially useful in small reservoirs, gear boxes and other applications where space is at a premium.

Since there is a ratio between length and diameter of a magnet for greatest power, each unit is designed to give maximum magnetic power possible in a small space.

Slim Line Tank Cleaners are available in two models; standard and heavy-duty. Although the magnetic unit is the same, heavy-duty is manufactured with a 5/8" solid steel support rod while the standard contains a 1/8" pipe size support rod.

To clean, simply remove from reservoir and wipe with a clean cloth every 3 to 6 months.

Order pipe plugs separately. Pipe plugs for installing in the top of the reservoir are optional and are furnished in 3/4" and 1 1/4". If space is available, it is recommended that the 1 1/4" plug be used for ease of removal.

3/4" Plug Part No.
12P (For Standard Rod)
HD 12P (For Heavy Duty Rod)

1 1/4" Plug Part No.
20P (For Standard Rod)
HD 20P (For Heavy Duty Rod)

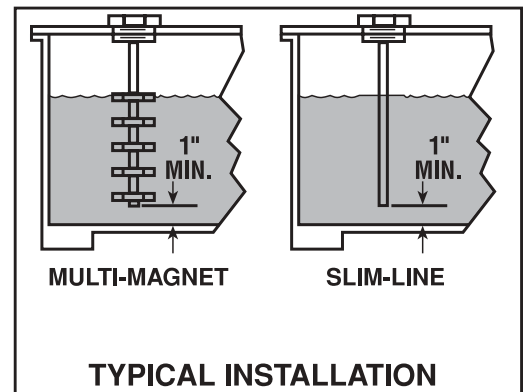
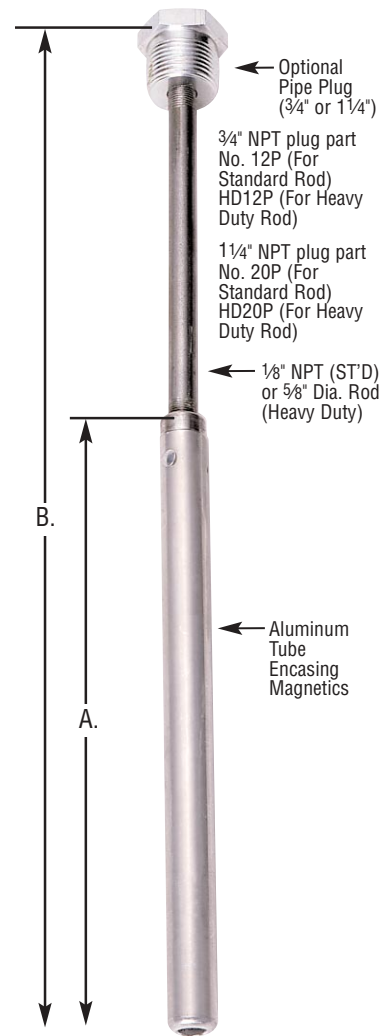
Note**Special Rod Lengths Available

Standard Slim Line 3000 Series

MODEL NO.		A	B
3002	IN	6	11
	MM	152	279
3003	IN	8.5	13.5
	MM	216	343
3004	IN	11	16
	MM	279	406
3005	IN	13.5	18.5
	MM	343	470
3006	IN	16	21
	MM	406	533
3007	IN	18.5	23.5
	MM	470	597
3008	IN	21	26
	MM	533	660
3009	IN	23.5	28.5
	MM	597	724
3010	IN	26	31
	MM	660	787

Heavy Duty Slim Line 4000 Series

MODEL NO.		A	B
4002	IN	5.8	10.8
	MM	147	274
4003	IN	8.3	13.3
	MM	211	338
4004	IN	10.8	15.8
	MM	274	401
4005	IN	13.3	18.3
	MM	338	465
4006	IN	15.8	20.8
	MM	401	528
4007	IN	18.3	23.3
	MM	465	592
4008	IN	20.8	25.8
	MM	528	655
4009	IN	23.3	28.3
	MM	592	719
4010	IN	25.8	30.6
	MM	655	777





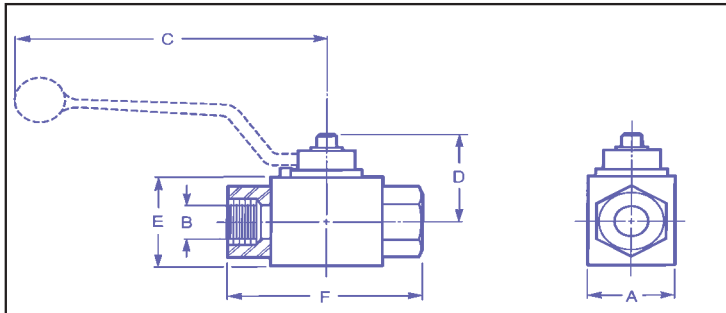
High Pressure Ball Valves

LHBV SERIES

- Carbon Steel Body Zinc Plated (1/4"-1 1/4" Port Sizes)
- Forged Body (1 1/2", 2 Port sizes)
- Full Port Sizes
- Hard Chrome Plated Steel Ball
- Delrin +MoS2 Ball Seals
- Viton O Ring
- NPT, SAE or BSP Ports
- Operating Pressures to 7250 PSI (500 Bar) see chart
- Operating Temperature -20° F to 212° F (-12° C to 100° C)

Options

- Lock Kits
- Stainless Steel
- Temperature Range -60° F to 400° F (-50 C to 200 C depending upon seal material)



Dimensional Detail

MODEL NUMBER	SAE MODEL	PORT SIZE	WORKING PRESSURE		A	B	C	D	E	F	WEIGHT LBS/KG
LHBV-4	LBVA-4	1/4"	7500	IN	1	0.2	4.6	1.2	1.3	2.7	0.8
				MM	10	5	24	30	80	44	0.4
LHBV-6	LBVA-6	3/8"	7500	IN	1.3	0.4	4.6	1.2	1.5	3.1	1.1
				MM	10	10	24	30	80	44	0.5
LHBV-8	LBVA-8	1/2"	5000	IN	1.4	0.5	4.6	1.2	1.6	4.1	1.4
				MM	15	13	31	30	80	51	0.6
LHBV-12	LBVA-12	3/4"	5000	IN	1.9	0.8	7.2	1.8	2.2	4.3	3.3
				MM	20	20	37	46	113	57	1.5
LHBV-16	LBVA-16	1"	5000	IN	2.3	0.9	7.2	2	2.6	4.6	4.4
				MM	25	23	45	51	113	70	2
LHBV-20	LBVA-20	1 1/4"	5000	IN	3	0.9	8.5	2.5	3.3	4.3	4.6
				MM	32	23	57	64	138	81	2.1
LHBV-24	LBVA-24	1 1/2"	5000	IN	3.6	0.9	8.5	2	3.9	5.1	13
				MM	40	23	70	51	138	94	5.9
LHBV-32	LBVA-32	2"	5000	IN	4.2	0.9	8.5	2.9	4.4	5.5	19
				MM	45	23	84	74	157	112.5	8.6

REPLACEMENT HANDLES	Size	REPLACEMENT SEALS	Size	LOCKING KITS	Size
BVH-4	1/4"	BVH-SK-4	1/4"	LK-1	1/4", 3/8", 1/2"
BVH-6	3/8"	BVH-SK-6	3/8"	LK-2	3/4", 1, 1 1/4"
BVH-8	1/2"	BVH-SK-8	3/8"	LK-3	1 3/8", 2
BVH-12	3/4"	BVH-SK-12	3/4"		
BVH-16	1"	BVH-SK-16	1"		
BVH-20	1 1/4"	BVH-SK-20	1 1/4"		
BVH-24	1 1/2"	BVH-SK-24	1 1/2"		
BVH-32	2"	BVH-SK-32	2"		



Low Pressure Ball Valves

Model LPBV

- 1/4" through 4" NPT Full ported
- Forged Brass body nickel plated
- Blow out proof stems
- Pressures to 735 PSI (50 bar)
- Teflon ball and stem seals
- Suitable for oil, water, gas, fuel, gasoline, acid, and compressed air
- Operating temperatures -22° F to +350° F (-30C to +162 C)



Options

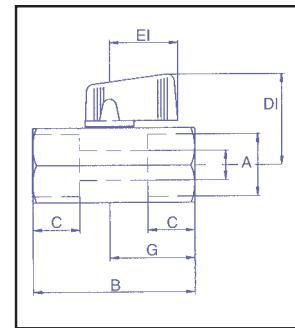
- Locking Valve Handle

Dimensional Detail

MODEL NUMBER	LOCKING MODEL	NPT THREAD	WORKING PRESSURE									WEIGHT LBS/KG
				A	B	C	D1	E1	F	G		
LPBV-4	LC-LPBV-4	1/4"	735	IN	0.4	1.7	0.9	1.5	3.1	0.9	0.9	0.3
				MM	10	44.4	23.5	37	80	22.2	22.2	0.1
LPBV-6	LC-LPBV-6	3/8"	735	IN	0.4	1.7	0.9	1.5	3.1	0.9	0.9	0.3
				MM	10	44.4	24	37	80	22.2	22.2	0.1
LPBV-8	LC-LPBV-8	1/2"	735	IN	0.6	2	1.2	1.6	3.1	1	1	0.4
				MM	15	51	30.5	41	80	25	25.5	0.2
LPBV-12	LC-LPBV-12	3/4"	590	IN	0.8	2.2	1.5	2.2	4.4	1.1	1.2	0.7
				MM	20	57	37	55	113	28	29.5	0.3
LPBV-16	LC-LPBV-16	1"	590	IN	1	2.8	1.8	2.3	4.4	1.4	1.4	1.1
				MM	25	70	45.5	59	113	35	35	0.5
LPBV-20	LC-LPBV-20	1 1/4"	440	IN	1.3	3.2	2.2	2.9	5.4	1.6	1.6	2
				MM	32	80.5	57	74.5	137.5	40.5	40	0.9
LPBV-24	LC-LPBV-24	1 1/2"	440	IN	1.6	3.7	2.8	3.2	5.4	1.9	1.8	3
				MM	40	94	70	80.5	137.5	47.5	46.5	1.4
LPBV-32	LC-LPBV-32	2"	370	IN	1.8	4.4	3.3	3.8	6.2	2.2	2.2	4
				MM	45	112.5	84	96.5	157	57	55.5	1.8
LPBV-40	LC-LPBV-40	2 1/2"	265	IN	2.1	5	3.8	4.3	7.8	2.5	2.5	8
				MM	54	128	96	109	197	63.5	64.5	3.6
LPBV-48	LC-LPBV-48	3"	205	IN	2.6	5.8	4.7	5	9.8	2.9	2.9	13
				MM	65	148	119	126	250	73.5	74.5	5.9
LPBV-64	LC-LPBV-64	4"	180	IN	3.1	6.7	5.4	5.3	9.8	3.3	3.3	22
				MM	80	169	138	135	250	85	84	10

LPBVT

- 1/4" through 1" NPT Full ported
- Forged Brass body nickel plated
- Blow out proof stems
- Pressures to 735 PSI (50 bar)
- Teflon ball and stem seals
- Suitable for oil, water, gas, fuel, gasoline, acid, and compressed air
- Operating temperatures -22° F to +350° F (-30C to +162C)



Dimensional Detail

MODEL NUMBER	NPT THREAD	WORKING PRESSURE		A	B	C	D	E	F	G
LPBVT-4	1/4"	735	IN	0.4	1.7	0.9	1.4	1.9	0.9	0.9
			MM	10	44.4	23.5	36.5	47	22.2	22.2
LPBVT-6	3/8"	735	IN	0.4	1.7	0.9	1.4	1.9	0.9	0.9
			MM	10	44.4	24	36.5	47	22.2	22.2
LPBVT-8	1/2"	735	IN	0.6	2	1.2	1.6	1.9	1	1
			MM	15	50.5	30.5	40	47	25	25.5
LPBVT-12	3/4"	590	IN	0.8	2.8	1.5	1.9	2.4	1.1	1.2
			MM	20	70	37	48	62	28	29.5
LPBVT-16	1"	590	IN	1	3.2	1.8	2	2.4	1.4	1.4
			MM	25	80.5	45.5	52	62	35	35

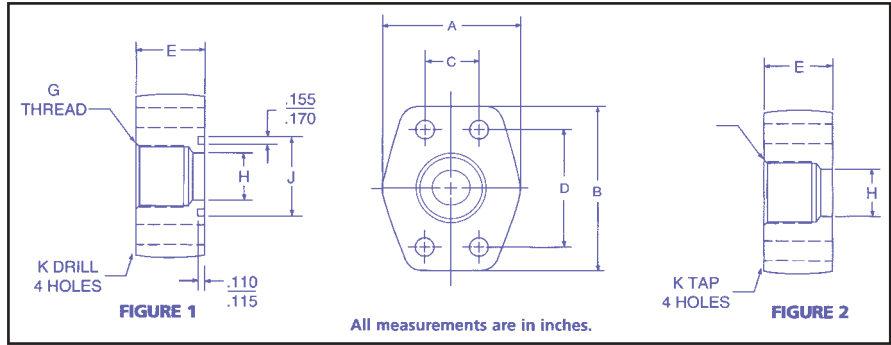
PHOTO TO BE
SCANNED
MBV-4



4-Bolt Flanged Head Fittings

For Pipe

Length: Inches - Black;
 Millimeters - Red.
 Pressure: PSI - Black;
 Megapascals - Red.



3000 PSI NPTF Female Thread - Drilled Holes - O Ring Figure 1 & 2

O-Ring Part No. Fig. 1	Flat Face Part No. Fig. 2	Pipe Size	Pad Size	A	B	C	D	E	F	H Dia.	J Dia.	K Dia.	L Dia. Spot Face	NPTF Thread	* O Ring Part Number	* Socket Head Cap Screw Part Number	* Hi Collar Lock Washer Part Number
W43-8-8	W104-8-8	.50 12.7	.50 12.7	1.81 46.0	2.12 53.8	.688 17.48	1.500 38.10	1.25 31.8	.91 23.1	.50 12.7	1.000 25.40	.344 8.74	.500 12.70	.50 12.7	M345-15	M477-10	M478-4
W43-12-12	W104-12-12	.75 19.0	.75 19.0	2.06 52.3	2.56 65.0	.875 22.23	1.875 47.63	1.25 31.8	.84 21.3	.75 19.0	1.250 31.75	.406 10.31	.594 15.09	.75 19.0	M345-19	M477-5	M478-1
W43-16-16	W104-16-16	1.00 25.4	1.00 25.4	2.31 58.7	2.75 69.8	1.031 26.19	2.062 52.37	1.38 35.0	.97 24.6	1.00 25.4	1.560 39.62	.406 10.31	.594 15.09	1.00 25.4	M345-24	M477-6	M478-1
W43-20-20	W104-20-20	1.25 31.8	1.25 31.8	2.88 73.2	3.12 79.2	1.188 30.18	2.312 58.72	1.50 38.1	1.03 26.2	1.25 31.8	1.750 44.45	.469 11.91	.688 17.48	1.25 31.8	M345-27	M477-7	M478-2
W43-24-24	W104-24-24	1.50 38.1	1.50 38.1	3.25 82.6	3.69 93.7	1.406 35.71	2.750 69.85	1.62 41.1	1.09 27.7	1.50 38.1	2.120 53.85	.531 13.49	.781 19.84	1.50 38.1	M346-3	M477-4	M478-3
W43-32-32	W104-32-32	2.00 50.8	2.00 50.8	3.81 96.8	4.00 101.6	1.688 42.88	3.062 77.77	1.62 41.1	1.09 27.7	2.00 50.8	2.495 63.37	.531 13.49	.781 19.84	2.00 50.8	M346-6	M477-4	M478-3
W43-40-40	W104-40-40	2.50 63.5	2.50 63.5	4.28 108.7	4.50 114.3	2.000 50.80	3.500 88.90	2.00 50.8	1.47 37.3	2.50 63.5	3.000 76.20	.531 13.49	.781 19.84	2.50 63.5	M346-10	M477-9	M478-3
W43-48-48	W104-48-48	3.00 76.2	3.00 76.2	5.16 131.1	5.31 134.9	2.438 61.93	4.188 106.38	2.25 57.2	1.59 40.4	3.00 76.2	3.620 91.95	.656 16.66	.969 24.61	3.00 76.2	M346-15	M477-11	M478-5

*These parts are not supplied under fitting Catalog Number. Must be ordered separately.

S.A.E. FOUR BOLT FLANGE KITS

Code 61
 Size
 Lenz P/N
 3/4" W43-12-12K
 1" W43-16-16K
 1 1/4" W43-20-20K
 1 1/2" W43-24-24K
 2" W43-32-32K
 2 1/2" W43-40-40K

Code 62
 Size
 Lenz P/N
 3/4" W4-12-12K
 1" W4-16-16K
 1 1/4" W4-20-20K
 1 1/2" W4-24-24K
 2" W4-32-32K
 2 1/2" W4-40-40K
 3" W4-48-48K

SPLIT FLANGE KITS

Code 61
 Size
 Lenz P/N
 3/4" 12SFK
 1" 16SFK
 1 1/4" 20SFK
 1 1/2" 24SFK
 2" 32SFK

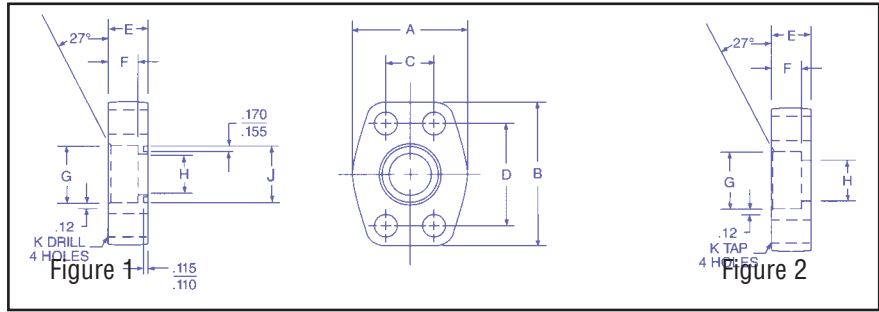
Code 62
 Size
 Lenz P/N
 3/4" 12SFXX
 1" 16SFXX
 1 1/4" 20SFXX
 1 1/2" 24SFXX
 2" 32SFXX



4-bolt Flanged Head Fittings

For Pipe

Length: Inches - Black;
 Millimeters - Red.
 Pressure: PSI - Black;
 Megapascals - Red.



3000 PSI Flat Socket - Pipe (Code 61) Figure 1 & 2

O-Ring Part Number Fig. 1	Flat Face Part Number Fig. 2	Pipe Size	Pad Size	A	B	C ±.010	D ±.010	E	F	G Dia. +.015 -.005	H Dia.	J Dia.	K Dia.	* O Ring Part Number	* Socket Head Cap Screw Part Number	* Hex Head Cap Screw Part Number	* Hi Collar Lock Washer Part Number
W4-8-8	W61-8-8	.50 12.7	.50 12.7	1.813 46.0	2.125 53.9	.688 12.0	1.500 38.1	.75 19.0	.56 14.2	.855 21.7	.50 12.7	1.000 25.4	.344 8.73	M345-15	M477-10	M522-11	M478-4
W4-12-12	W61-12-12	.75 19.0	.75 19.0	2.06 52.3	2.56 65.0	.875 22.23	1.875 47.63	.75 19.0	.19 4.8	1.062 26.97	.75 19.0	1.250 31.75	.406 10.31	M345-19	M477-5	M522-11	M478-1
W4-16-16	W61-16-16	1.00 25.4	1.00 25.4	2.31 58.7	2.75 69.8	1.031 26.19	2.062 52.37	.88 22.4	.25 6.4	1.328 33.73	1.00 25.4	1.560 39.62	.406 10.31	M345-24	M477-6	M522-12	M478-1
W4-20-20	W61-20-20	1.25 31.8	1.25 31.8	2.88 73.2	3.12 79.2	1.188 30.18	2.312 58.72	.94 23.9	.25 6.4	1.672 42.47	1.25 31.8	1.750 53.85	.469 13.49	M345-27	M477-7	M522-13	M478-2
W4-24-24	W61-24-24	1.50 38.1	1.50 38.1	3.25 82.6	3.69 93.7	1.406 35.71	2.750 69.85	1.19 30.2	.44 11.2	1.922 48.82	1.50 38.1	2.120 53.85	.531 13.49	M346-3	M477-8	M522-14	M478-3
W4-32-32	W61-32-32	2.00 50.8	2.00 50.8	3.81 96.8	4.00 101.6	1.688 42.88	3.062 77.77	1.38 35.0	.50 12.7	2.406 61.11	2.00 50.8	2.495 63.37	.531 13.49	M346-6	M477-9	M522-15	M478-3
W4-40-40	W61-40-40	2.50 63.5	2.50 63.5	4.28 108.7	4.50 114.3	2.000 50.80	3.500 88.90	1.75 44.4	.75 19.0	2.906 73.81	2.50 63.5	3.000 76.20	.531 13.49	M346-10	M477-14	M522-16	M478-3
W4-48-48	W61-48-48	3.00 76.2	3.00 76.2	5.16 131.1	5.31 134.9	2.438 61.93	4.188 106.38	2.12 53.8	.88 22.4	3.547 90.09	3.00 76.2	3.620 91.95	.656 16.66	M346-15	M477-16	M522-18	M478-5

6000 PSI Flat Socket - Pipe (Code 62) Figure 1 & 2

O-Ring Part Number Fig. 1	Flat Face Part Number Fig. 2	Pipe Size	Pad Size	A	B	C	D	E	F	G	H	K Thread UNC-2B	* O Ring Part Number	* Socket Head Cap Screw Part Number	* Hex Head Cap Screw Part Number	* Hi Collar Lock Washer Part Number
W59-8-8	W60-8-8	0.50 12.7	0.50 12.7	1.94 49.2	2.30 58.4	0.718 18.2	1.594 40.4	0.870 22.1	0.560 14.2	0.855 21.72	0.500 12.7	5/16-18	M345-15	M477-10	M522-11	M478-4
W59-12-12	W60-12-12	0.75 19.0	0.75 19.0	2.38 60.4	2.81 71.3	0.937 23.8	2.00 50.13	1.250 31.7	0.560 14.22	1.063 27.0	0.750 19.0	3/8-16	M345-19	M477-23	M522-11	M478-1
W59-16-16	W60-16-16	1.00 25.4	1.00 25.4	2.75 69.8	3.19 81.0	1.094 27.79	2.250 57.15	1.00 25.4	.38 9.6	1.33 33.8	1.00 25.4	7/16-14	M345-24	M477-29	M522-13	M478-2
W59-20-20	W60-20-20	1.25 31.8	1.25 31.8	3.06 77.7	3.75 95.2	1.250 31.75	2.625 66.68	1.25 31.8	.56 14.2	1.67 42.4	1.25 31.8	1/2-13	M345-27	M477-7	M522-14	M478-3
W59-24-24	W60-24-24	1.50 38.1	1.50 38.1	3.75 95.2	4.44 112.8	1.438 36.53	3.125 79.38	1.50 38.1	.75 19.0	1.92 48.8	1.50 38.1	5/8-11	M346-3	M477-11	M522-19	M478-5
W59-32-32	W60-32-32	2.00 50.8	2.00 50.8	4.50 114.3	5.25 133.4	1.750 44.45	3.812 96.82	1.75 44.4	.88 22.4	2.41 61.2	2.00 50.8	3/4-10	M346-6	M477-17	M522-20	M478-7

500 PSI Flat Socket - Pipe Figure 1 & 2

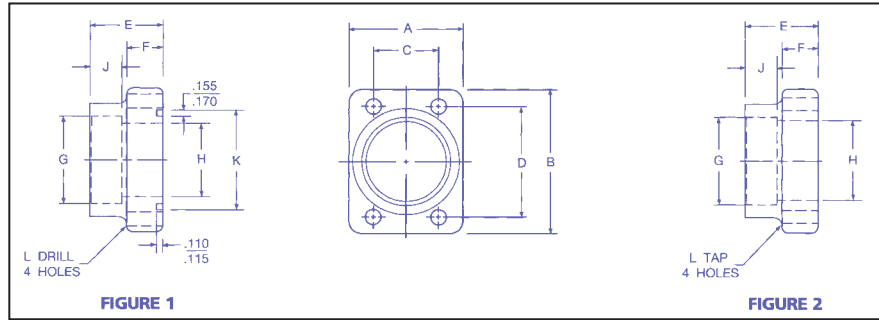
O-Ring Part Number Fig. 1	Flat Face Part Number Fig. 2	Pipe Size	Pad Size	A	B	C ±.010	D ±.010	E	F	G Dia. +.015 -.005	H Dia.	J Dia.	K Dia.	* O Ring Part Number	* Socket Head Cap Screw Part Number	* Hex Head Cap Screw Part Number	* Hi Collar Lock Washer Part Number
W72-48-48	W91-48-48	3.00 76.2	3.00 76.2	5.12 130.5	5.31 134.9	2.438 61.93	4.188 106.38	1.38 35.0	.25 6.4	3.547 90.09	3.00 76.2	3.620 91.95	.656 16.68	M346-15	M477-20	M522-24	M475-5
W72-56-56	W91-56-56	3.50 88.9	3.50 88.9	5.50 139.7	6.00 152.4	2.750 69.85	4.750 120.65	1.44 36.6	.25 6.4	4.047 102.79	3.50 88.9	4.105 104.26	.656 16.66	M346-19	M477-20	M522-24	M478-5
W72-64-64	W91-64-64	4.00 101.6	4.00 101.6	6.00 152.4	6.38 162.1	3.062 77.77	5.125 130.18	1.50 38.1	.25 6.4	4.578 116.28	4.00 101.6	4.605 116.97	.656 16.66	M346-23	M477-11	M522-19	M478-5



4-Bolt Flanged Head Fittings

For Pipe

Length: Inches - Black;
 Millimeters - Red.
 Pressure: PSI - Black;
 Megapascals - Red.



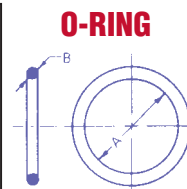
3000 PSI Deep Socket - Tapped Holes

Figure 1 & 2

O-Ring Part No. Fig. 1	Flat Face Part No. Fig. 2	Pipe Size	Pad Size	A	B	C	D	E	F	G Dia.	H Dia.	J	K Thread UNC-2B	* O Ring Part Number	* Socket Head Cap Screw Part Number	* Hex Head Cap Screw Part Number	* Hi Collar Lock Washer Part Number
W31-12-12	W3-12-12	.75 19.0	.75 19.0	1.69 42.9	2.56 65.0	.875 22.23	1.875 47.63	1.06 26.9	.50 12.7	1.062 26.97	.75 19.0	.50 12.7	3/8-16	M345-19	M477-5	M522-11	M478-1
W31-16-16	W3-16-16	1.00 25.4	1.00 25.4	1.94 49.3	2.75 69.8	1.031 26.19	2.062 52.37	1.25 31.8	.56 14.2	1.328 33.73	1.00 25.4	.62 15.7	3/8-16	M345-24	M477-6	M522-12	M478-1
W31-20-20	W3-20-20	1.25 31.8	1.25 31.8	2.19 55.6	3.12 79.2	1.188 30.18	2.312 58.72	1.44 36.6	.62 15.7	1.672 42.47	1.25 31.8	.75 19.0	7/16-14	M345-27	M477-7	M522-13	M478-2
W31-24-24	W3-24-24	1.50 38.1	1.50 38.1	2.56 65.0	3.69 93.7	1.406 35.71	2.750 69.85	1.75 44.4	.81 20.6	1.922 48.82	1.50 38.1	1.00 25.4	1/2-13	M346-3	M477-8	M522-14	M478-3
W31-32-32	W3-32-32	2.00 50.8	2.00 50.8	3.06 77.7	4.00 101.6	1.688 42.88	3.062 77.77	2.00 50.8	1.06 26.9	2.406 61.11	2.00 50.8	1.12 28.4	1/2-13	M346-6	M477-9	M522-15	M478-3
W31-40-40	W3-40-40	2.50 63.5	2.50 63.5	3.56 90.4	4.50 114.3	2.000 50.80	3.500 88.90	2.31 58.7	1.12 28.4	2.906 73.81	2.50 63.5	1.31 33.3	1/2-13	M346-10	M477-14	M522-16	M478-3

For Fittings (SAE J515)

Part Number	Tube O.D. Ref.	I.D. A	Cross Section B
M383-4	.25	.351	.072
M383-5	.31	.414	.072
M383-6	.38	.468	.078
M383-8	.50	.644	.087
M383-10	.62	.755	.097
M383-12	.75	.924	.116
M383-14	.88	1.048	.116
M383-16	1.00	1.171	.116
M383-20	1.25	1.475	.118
M383-24	1.50	1.720	.118



O rings
 Length - Inches - Black
 Millimeters - Red
 Pressure - PSI Black
 Megapascals - Red

For Split Flange Clamp Heads (SAE J518)

Part Number	Flange Size	A	B
M345-15	.50	.75	.12
M345-19	.75	1.00	.12
M345-24	1.00	1.31	.12
M345-27	1.25	1.50	.12
M346-3	1.50	1.88	.12
M346-6	2.00	2.25	.12
M346-10	2.50	2.75	.12
M346-15	3.00	3.38	.12
M346-19	3.50	3.88	.12
M346-23	4.00	4.38	.12

Also Available

4-bolt flanged-head fittings

For Pipe

3000 PSI Saddle - Drilled Holes
 3000 PSI 90 Elbow - Tapped Holes
 3000 PSI 90 Elbow - Drilled Holes
 3000 PSI Boss - Drilled Holes
 3000 PSI 90 Elbow NPTF Female
 Thread - Drilled Hole

For Tube

3000 PSI Flat Socket - Drilled Holes
 3000 PSI Deep Socket - Tapped Holes
 3000 PSI Saddle - Tapped Holes
 3000 PSI Saddle - Drilled Holes
 3000 PSI 90 Elbow - Tapped Holes
 3000 PSI 90 Elbow - Drilled Holes

4-bolt flanged-head fittings and components.

For Pipe and Tube

3000 PSI Tank Pilot - Tapped Holes
 Weld Pipe Plug
 Flange Plug
 Hex Head Cap Screws
 Socket Head Cap Screws
 4-bolt flanged-head components

For Pipe and Tube

Spring Lock Washers
 High Collar Spring Lock Washers
 O Rings
 Connector Plates



Split Flange Halves

For SAE Flanged Head Connection

Length: Inches - Black;

Millimeters - Red.

Pressure: PSI - Black;

Megapascals - Red.

Bolt Torque Range:

Pounds/Inches - Black;

Newton-meters - Red.

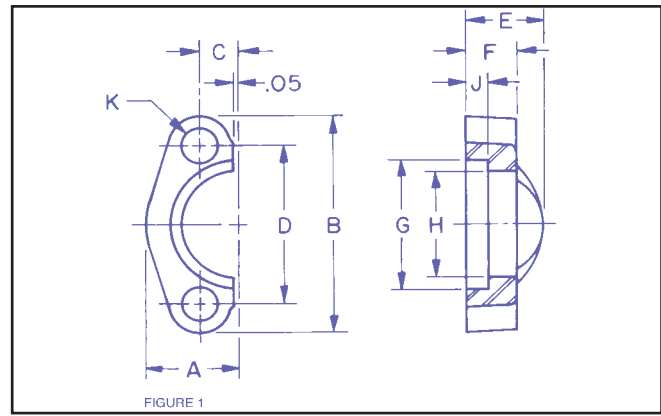


FIGURE 1

SAE Standard 3000 PSI (SAE J518 Code 61)

Figure 1

Flange Part Number Fig. 1	Flange Size	A	B	C	D	E	F	G	H	J	K	* Bolt Part Number	* Lock Washer Part Number	Heck Bolt Torque Range (LB-IN)	Max Rec. Working Press (PSI)
8SF-2	.50 12.7	.86 21.8	2.12 53.8	.344 8.74	1.500 38.10	.75 19.0	.50 12.7	1.219 30.96	.955 24.26	.245 6.22	.344 8.74	M522-1	5LW	175-225	5000
12SF-2	.75 19.0	.98 24.9	2.56 65.0	.438 11.13	1.875 47.63	.88 22.4	.56 14.2	1.531 38.89	1.265 32.13	.245 6.22	.406 10.31	M522-2	6LW	250-350	5000
16SF-2	1.00 25.4	1.11 28.2	2.75 69.8	.515 13.08	2.062 52.37	.94 23.9	.62 15.7	1.781 45.24	1.515 38.48	.295 7.49	.406 10.31	M522-2	6LW	325-425	5000
20SF-2	1.25 31.8	1.39 35.3	3.12 79.2	.594 15.09	2.312 58.72	.88 22.4	.56 14.2	2.031 51.59	1.720 43.69	.295 7.49	.469 11.91	M522-3	7LW	425-550	4000
24SF-2	1.50 38.1	1.58 40.1	3.69 93.7	.703 17.86	2.750 69.85	1.00 25.4	.62 15.7	2.406 61.11	2.000 50.80	.297 7.54	.531 13.49	M522-4	8LW	550-700	3000
32SF-2	2.00 50.8	1.86 47.2	4.00 101.6	.844 21.44	3.062 77.77	1.03 26.2	.62 15.7	2.844 72.24	2.470 62.74	.355 9.02	.531 13.49	M522-4	8LW	650-800	3000
40SF-2	2.50 63.5	2.09 53.1	4.50 114.3	1.000 25.40	3.500 88.90	1.50 38.1	.75 19.1	3.344 84.94	2.950 74.93	.355 9.02	.531 13.49	M522-5	8LW	950-1100	2500
48SF-2	3.00 76.2	2.53 64.3	5.31 134.9	1.219 30.96	4.188 106.38	1.62 41.1	.88 22.3	4.031 102.39	3.580 90.93	.355 9.02	.656 16.66	M522-7	10LW	1650-1800	2000
56SF-2	3.50 88.9	2.70 68.6	6.00 152.4	1.375 34.93	4.750 120.65	1.12 28.4	.88 22.3	4.531 115.09	4.030 102.36	.422 10.72	.656 16.66	M522-8	10LW	1400-1600	500

SEE PAGE 28 FOR KITS

6000 PSI (SAE J518 Code 62) Figure 1

Flange Part Number Fig. 1	Flange Size	A	B	C	D	E	F	G	H	J	K	* Bolt Part Number	* Lock Washer Part Number	Heck Bolt Torque Range (LB-IN)	Max Rec. Working Press (PSI)
12SFX-2	.75 19.0	1.14 29.0	2.81 71.4	.469 11.91	2.000 50.80	1.12 28.4	.75 19.0	1.656 42.06	1.280 32.51	.325 8.26	.406 10.31	M522-1	6LW	300-400	6000
16SFX-2	1.00 25.4	1.33 33.8	3.19 81.0	.547 13.89	2.250 57.15	1.31 33.3	.94 23.9	1.906 48.41	1.530 38.86	.355 9.02	.469 11.91	M522-13	7LW	500-600	6000
20SFX-2	1.25 31.8	1.48 37.6	3.75 95.2	.625 15.88	2.625 66.68	1.50 38.1	1.06 26.9	2.156 54.76	1.750 44.45	.385 9.78	.531 13.49	M522-5	8LW	750-900	6000
24SFX-2	1.50 38.1	1.83 46.5	4.44 112.8	.719 18.26	3.125 79.38	1.69 42.9	1.19 30.2	2.531 64.29	2.030 51.56	.475 12.07	.656 16.66	M522-9	10LW	1400-1600	6000
32SFX-2	2.00 50.8	2.20 55.9	5.25 133.4	.875 22.23	3.812 96.86	2.06 52.3	1.44 36.6	3.156 80.16	2.660 67.56	.475 12.07	.781 19.84	M522-26	12LW	2400-2600	6000

*These parts are not supplied under fitting Catalog Number. Must be ordered separately.

To order two split flange halves plus hardware, drop the -2 after the SF or SFX.

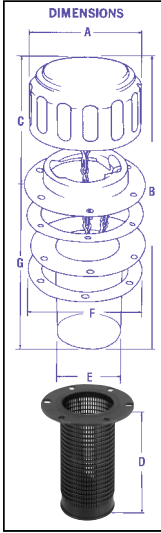
SEE PAGE 28 FOR KITS

Filler Breather Caps

Extra LARGE-Bayonet Style Filler Strainer Breather

Model 57-XL

- Gives 5 Times Greater Filter Air flow Than Standard Units
- 200 GPM or 26.7 CFM
- Keeps Reservoir Fluids Clean, Protects and Prolongs Hydraulic System Life!
- Each unit packaged in kit with instructions and template for drilling mounting holes.
- Strainer lengths, screen mesh and materials can be varied to meet special needs.



Nickel-Chrome Plated Cap - Large capacity, Twist-To-Lock, removable cap breathes and filters the air. Air vents are concealed permitting outdoor installation. Fluted finger insertions for easy gripping. 40 Micron (.0016") air filtering is standard (Part No. 40 XL CAP) with Superfine 10 Micron optional (Part No. 10 XL CAP).

Optional Black powder coated cap available.

Zinc Plated Safety Chain On Every Unit - Prevents loss of cap. J.I.C. approved (Comes as part of Cap).

Nickel Plated Close Neck Filter Flange, Bayonet type. Has six 7/32" holes positioned on a 2 7/8" bolt circle on a 3 1/4" dia. flange (Part No. 5).

Two Heavy Duty Oil Resistant Fiber Gaskets - Provide positive sealing between flanges. Have six matching holes (Part No. 8).

Stainless Strainer - 30 Mesh Stainless Screen Basket. 3" deep, 1 15/16" in diameter. Large area provides for rapid filling.

Screen mounting flange is stainless - with six matching holes (Part No. 7).

*Optional screens: 6" length, 100 mesh or 30 mesh. 8" length, 30 mesh

Six 10-24 Swagelock self-tapping screws (Part No. 9) - prevent metal particles from getting into reservoir during installation by swaging the threads instead of cutting them.

Optional 10-32 swagelock screws. See options page 6 for details.

Optional Nylon Strainer prevents punch out. Exp: 57XL-40N



57-XL-40N

57-XL-40

BPC-57-XL-40



LC Option Locking Cap

HN Option High Neck

DIP Option Dipstick

Ordering Code

- 57-XL-40-N - *

Omit (Standard)	SM Side Mount
------------------------	----------------------

Chrome Omit (Standard)	LC Locking Cap
ISO Hydraulic Fluid (Stamped In Cap)	AS Anti-Splash
BPC Black Powder (Coated Cap/Flange)	SS Stainless Cap

40 40 Micron	10 10 Micron
---------------------	---------------------

1.5 HN 1.5" High Neck	3 HN 3" High Neck
DIP Specify Dipstick Length	

Full, Add, Low, Marks Available
Custom Lengths available

Omit 3" 30 Mesh (Standard)	3-100 3" 100 Mesh
N 4" Nylon	6-30 6" 30 Mesh
6-100 6" 100 Mesh	8-30 8" 30 Mesh

P-5 5 PSI Relief Valve	P-10 10 PSI Relief Valve
-------------------------------	---------------------------------

Pressurized Filler Breather Cap

57XL-10P-5 / 57XL-40P-5

This device is similar to a conventional breather, but it incorporates a relief valve set at 5 PSI and a vacuum breaker. When the fluid level first falls, air enters the reservoir through the vacuum breaker and filter. When the level rises, air is compressed rather than being expelled. Thereafter, changing fluid levels are accommodated by the changing size of the air bubble in the reservoir, instead of by breathing to atmosphere.

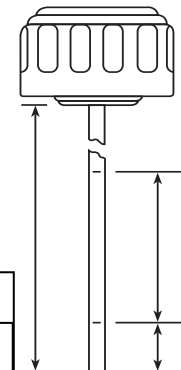
Pressurized breathers can reduce breathing by as much as 90% increasing the life of the breather filter by a factor of 10. They are recommended for systems that are expected to operate in extremely dusty environments and mobile applications to prevent spillage.

Dimensions: Same as 57XL series.
Optional: 10 PSI Relief Valve Setting.

Dimensional Detail

MODEL NUMBER	MICRON	GPM	AIR FLOW	STANDARD								
				A	B	C	D	E	F	G		
57XL	10, 40	200	30	IN MM	3 76	5.3 135	2.2 56	3.8 97	1.9 48	3.3 84	3 76	
FCS-537	10, 40	180	26.7	IN MM	2.6 66	4.8 121	1.8 46	3.8 97	1.9 48	3.3 84	3 76	
FCS-557	N/A	0	0	IN MM	2.5 64	4 102	1 25	3.8 97	1.9 48	3.3 84	3 76	

*G = 3" Length Basket



Please supply drawing specifying lengths shown. Dipstick may be marked "FULL" and "ADD". Optional wording available.

See Next Page

See Next Page

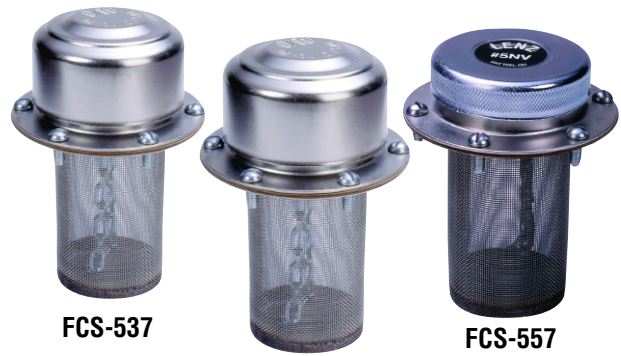


Filler Breather Caps

Bayonet Style Filler Strainer Breather

Model FCS (40 or 10 Microns)

- 40 GPM or 5.3 CFM
- Keeps Reservoir Fluids Clean, Protects and Prolongs Hydraulic System Life!
- Each unit packaged in kit with instructions and template for drilling mounting holes.
- Strainer lengths, screen mesh and materials can be varied to meet special needs.



FCS-537

FCS-537-W

FCS-557

Ordering Code

* - FCS - 537 - 40 - N - *

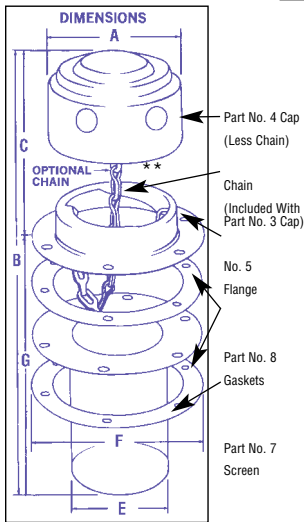
Omit	(Standard)	FCS 537	(Standard)
SM	Side Mount	FCS 537 W	Weatherproof
		FCS 557	Non Vent

40	(40 Micron)
10	(10 Micron)

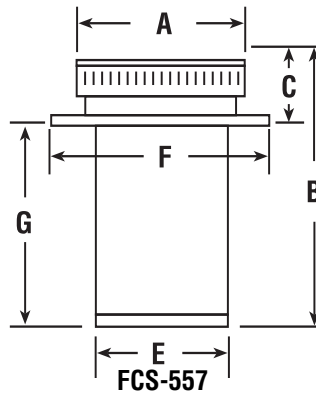
1.5 HN	1.5" High Neck
3 HN	3" High Neck
DIP	Specify Dipstick Length

Full, Add, Low, Marks Available
Custom Lengths available

Omit	3" 30 Mesh (Standard)
N	4" Nylon
3-100	3" 100 Mesh
6-30	6" 30 Mesh
6-100	6" 100 Mesh
8-30	8" 30 Mesh



FCS-537



FCS-557

Side Mount Filler Cap Assemblies

Filler Strainer Breather

Model SM

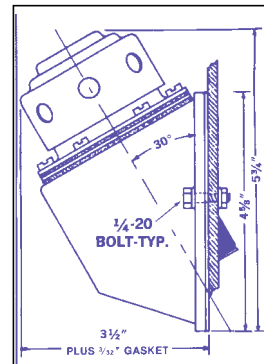
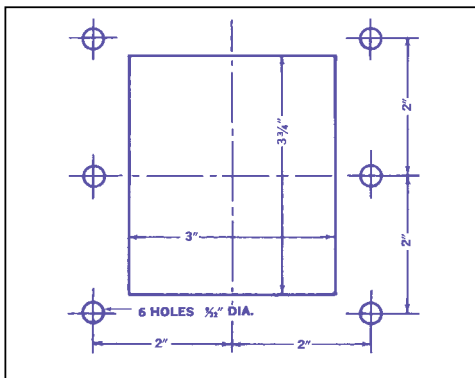
Filters, Breathes and Strains - Makes hydraulic fuel tank customizing easier. Designed for use on tanks that require filling from the end or side. Choice of standard or weather-proof cap (same as Model FCS) at no extra charge. The Super 3" cap used on Model 57-XL is available as an extra-cost option on these units. Fully assembled and ready to mount. Includes instructions and template.

May also be welded directly to side of reservoir.

Lenz Quality Standards - Newly designed, heavy-duty, one-piece housing is of zinc-plated steel. Six bolts with nuts and seals and mounting gasket are included. All other components and specifications are identical to those for Lenz Standard FCS Model or 57XL (Page 4). Nickel-chrome or black powder coated oxide finish optional at additional cost. Separate housings, unplated, are also available.



**New Heavy Gauge
Steel Housing**



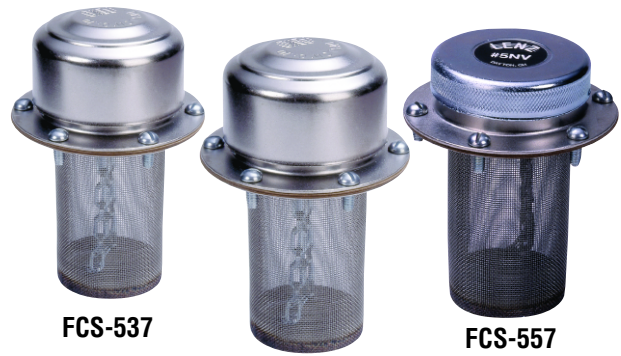


Filler Breather Caps

Bayonet Style Filler Strainer Breather

Model FCS (40 or 10 Microns)

- 40 GPM or 5.3 CFM
- Keeps Reservoir Fluids Clean, Protects and Prolongs Hydraulic System Life!
- Each unit packaged in kit with instructions and template for drilling mounting holes.
- Strainer lengths, screen mesh and materials can be varied to meet special needs.



FCS-537

FCS-537-W

FCS-557

Ordering Code

* - FCS - 537 - 40 - N - *

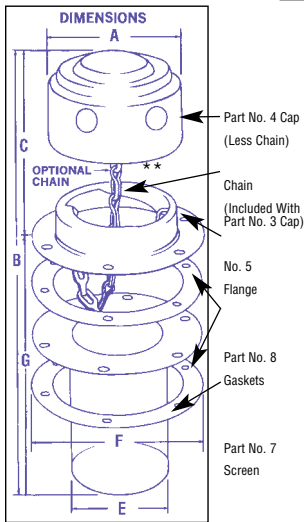
Omit	(Standard)	FCS 537	(Standard)
SM	Side Mount	FCS 537 W	Weatherproof
		FCS 557	Non Vent

40	(40 Micron)
10	(10 Micron)

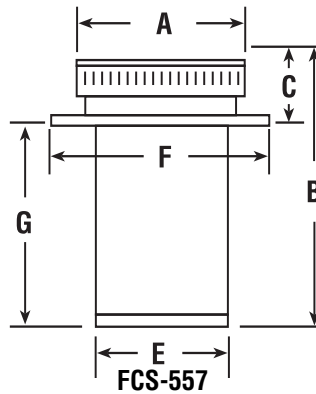
1.5 HN	1.5" High Neck
3 HN	3" High Neck
DIP	Specify Dipstick Length

Full, Add, Low, Marks Available
Custom Lengths available

Omit	3" 30 Mesh (Standard)
N	4" Nylon
3-100	3" 100 Mesh
6-30	6" 30 Mesh
6-100	6" 100 Mesh
8-30	8" 30 Mesh



FCS-537



FCS-557

Side Mount Filler Cap Assemblies

Filler Strainer Breather

Model SM

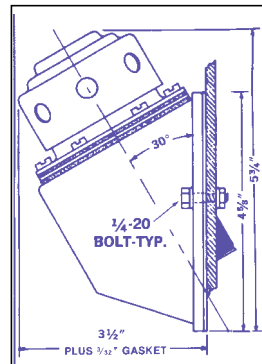
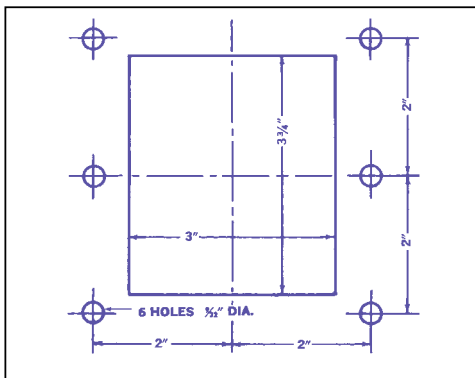
Filters, Breathes and Strains - Makes hydraulic fuel tank customizing easier. Designed for use on tanks that require filling from the end or side. Choice of standard or weather-proof cap (same as Model FCS) at no extra charge. The Super 3" cap used on Model 57-XL is available as an extra-cost option on these units. Fully assembled and ready to mount. Includes instructions and template.

May also be welded directly to side of reservoir.

Lenz Quality Standards - Newly designed, heavy-duty, one-piece housing is of zinc-plated steel. Six bolts with nuts and seals and mounting gasket are included. All other components and specifications are identical to those for Lenz Standard FCS Model or 57XL (Page 4). Nickel-chrome or black powder coated oxide finish optional at additional cost. Separate housings, unplated, are also available.



**New Heavy Gauge
Steel Housing**



Fuel & Hydraulic Filler Necks & Caps

Lenz Fuel/Hydraulic Filler Caps & Necks are fabricated of heavy gauge steel with an optional stainless steel screen. Fuel Caps are available in standard or lockable, non-vented or vented – the vented Fuel Caps having a built-in diaphragm to reduce spillage in case of rollover.

Hydraulic Caps are available in standard or lockable, non-vented or vented, the vented Hydraulic Caps provide a free flow of clean air for the hydraulic fluid.

Hydraulic Fill Necks

HYD Series-Hydraulic Applications

- 16 gauge (.060) steel
- Tube extension .12 wall thickness, 2.21 diameter
- Standard 3", 6" & 8" length tube extension
- Use Lenz 57 series breather products and non vent caps with these necks
- Tube extension not plated
- Safety chain standard

Diesel Fill Necks

HDF Series-Diesel Fuel Applications

- 16 gauge (.060) steel
- Tube extension .12 wall thickness, 2.56 diameter
- Standard 3", 6" & 8" length tube extension
- Use Lenz 6V and 6VLC series caps
- Tube extension not plated
- Safety chain standard

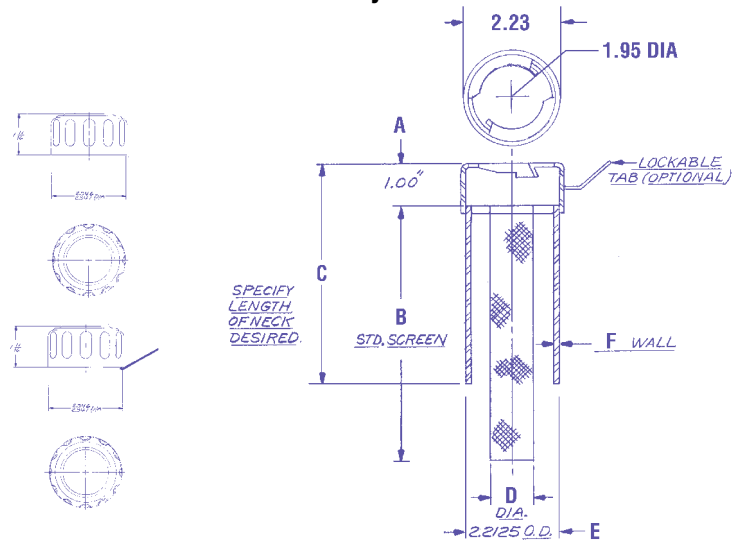
Options

- Stainless steel, aluminum available
- Angle tube cutoffs
- Lockable tab available
- Stainless steel screen std 4.5" 100 mesh
- Overflow tube available
- Threaded & flanged connection available



Note*
Tube extensions
chrome plated only
for photo.

Hydraulic Neck "HYD"



Dimensional Detail

MODEL NUMBER		Screen		Length			Wall F
		A	B	C	D	E	
HYD403	IN	1	4.5	3	1.2	2.2	0.12
	MM	25	114	76	30	53	3
HYD406	IN	1	4.5	6	1.2	2.2	0.12
	MM	25	114	152	30	53	3
HYD408	IN	1	4.5	8	1.2	2.2	0.12
	MM	25	114	204	30	53	3
HYD4**	IN	1	4.5		1.2	2.2	0.12
	MM	25	114		30	53	3

3", 6" & 8" standard lengths

MODEL NUMBER		Screen		Length			Wall F
		A	B	C	D	E	
HDF603	IN	1.44	4.5	3	1.5	2.6	0.12
	MM	37	114	76	38	66	3
HDF606	IN	1.44	4.5	6	1.5	2.6	0.12
	MM	37	114	152	38	66	3
HDF608	IN	1.44	4.5	8	1.5	2.6	0.12
	MM	37	114	204	38	66	3
HDF6**	IN	1.44	4.5		1.5	2.6	0.12
	MM	37	114		38	66	3

***SPECIFY LENGTH AND IF BASKET REQUIRED
MARK UP DRAWING AND FAX FOR A QUOTATION

Ordering Code

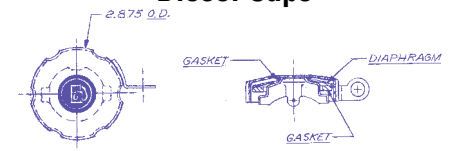
LC — HYD4 — 06 — 4.5

LOCK OPTIONAL	SERIES	NECK LENGTHS	LENGTH SCREEN OPTIONAL
LC	HYD4	03 3"	4.5"
OMIT	HDF6	06 6"	OMIT
		08 8"	
		SPECIFY	



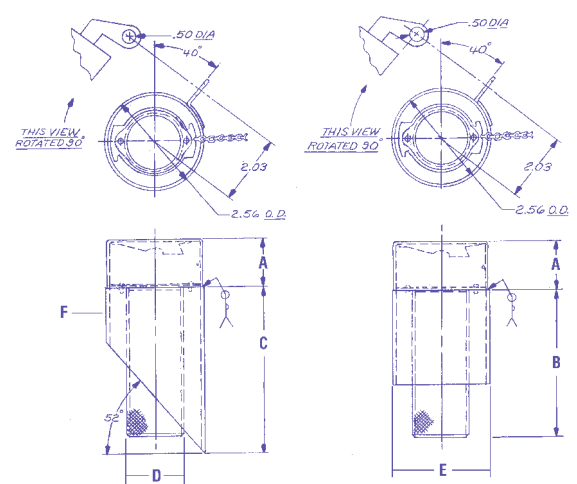
*Caps ordered separately see page 1b / 2b for cap options.

Diesel Caps



Rollover Cap 6V 6VLC

Diesel Neck "HDF"



Hydraulic Caps Options

(check mark all options needed)

- A) 40 Micron-Chrome Std.
- B) 10 Micron-Chrome Std.
- C) Lockable
- D) Pressurized
- E) Non-Vented
- F) Black Powder Coated

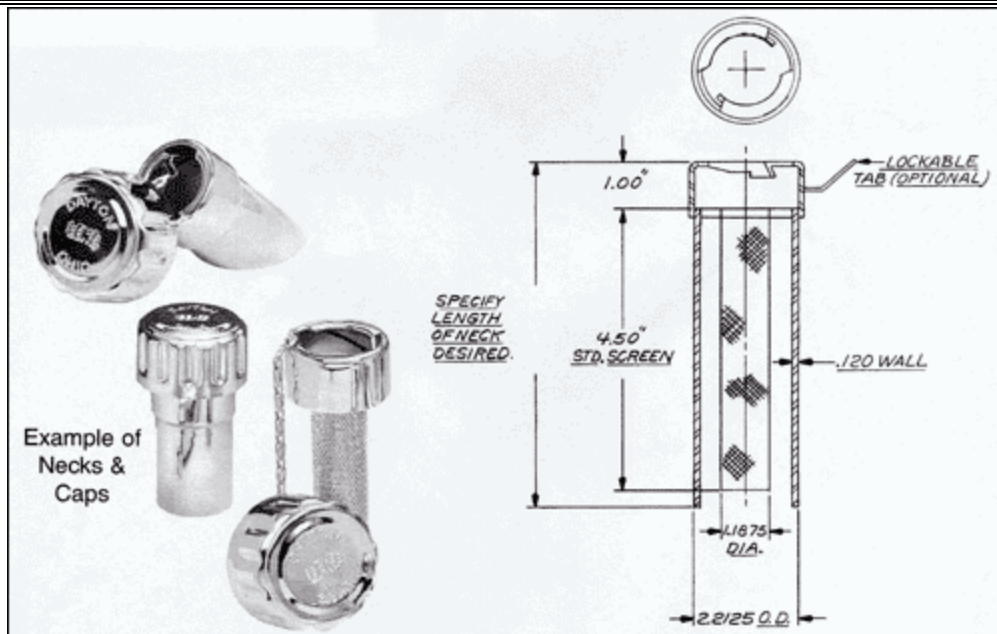
Lenz Part Number _____

(To be assigned by Lenz)

Hydraulic Neck Options

(Specify Length, check mark all options needed)

- F) Specify Length _____
- G) Straight Cut 90 Deg.
- H) Angle cut-specify degree
- I) Stainless steel screen - 4 1/2" length std.
- J) Lockable tab to mate with cap



Diesel Necks and Caps

Diesel Caps Options

(check mark all options needed)

A) Vented Standard (with diaphragm to prevent spillage of diesel fuel in case of rollover)

B) Lockable

Lenz Part Number _____
 (To be assigned by Lenz)

Diesel Neck Options

(Specify Length, check mark all options needed)

C) Specify Length _____

D) Straight Cut 90 Deg.

E) Angle cut-specify degree

F) Stainless steel screen- 4 1/2" length std.

G) Lockable tab to mate with diesel cap

