



**PATRIOT**

**PHD-MP SERIES**

**MODULAR PILOT CHECK VALVE**

**Driven by Innovation**  
**Power Precision Performance**  
734-479-9641 [patriothyd.com](http://patriothyd.com)





## PHD-MP Data Sheet

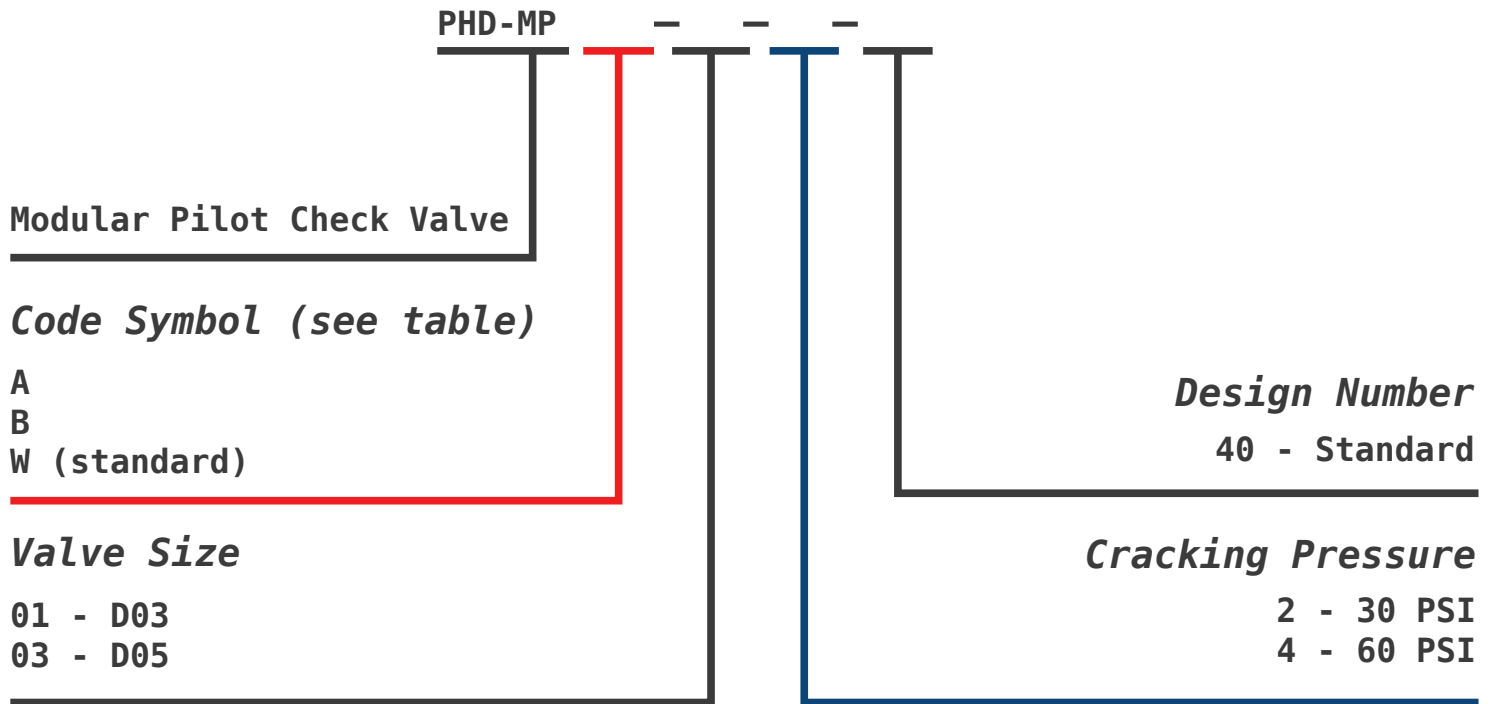
---

Standard	ISO 4401-03-02 NFPA T3.5.1-D03
Max. working pressure	450 PSI
Max. Flow	8 GPM
Working fluid	Mineral oil;phosphate-ester
Fluid temp.	0° - 160° F
Viscosity (mm <sup>2</sup> /s)	2.8~500
Opening pressure	A - 30PSI B - 60PSI
Cleanliness	The maximum allowable cleanliness of the oil should be according to 9th degree of Standard NAS1638.It is suggested that the minimum filter rating should be $\beta_{10} \geq 75$ .



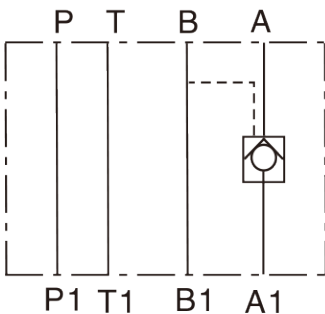


## PHD-MP Part Codes

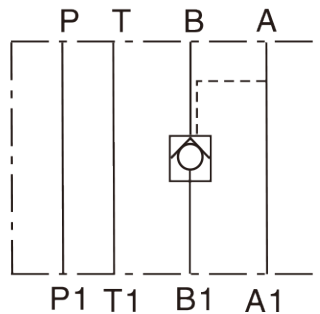


## PHD-MP Hydraulic Symbols

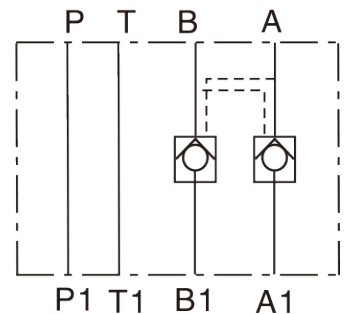
A Pipeline



B Pipeline



W Pipeline





# PHD-MP Dimensions

