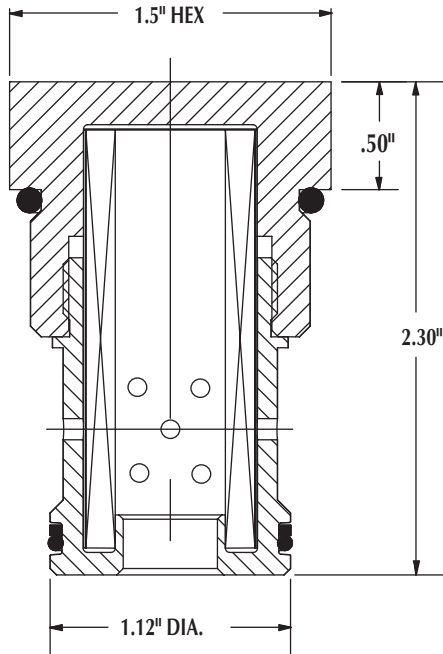


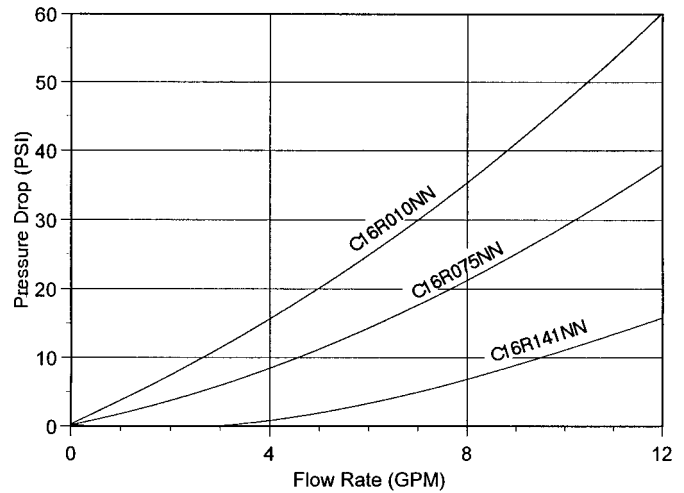


# C16 SERIES CARTRIDGE FILTER

Flows Up to: 12 GPM  
 Cavity: Common Cavity No. C16-2  
 Pressure: 3,000 PSI Max.  
 Temperature: Up to +250° F Operating  
 Applications: Petroleum based fluids only.  
 Contact factory for synthetic fluids.



*Average Pressure Drop Through Clean Filter Assembly  
With 150 SUS At 105°F*



**PRESSURE FILTERS**

*Sized to fit Common Cavity No. C16-2*

**HOW TO ORDER:**

**C16 R - W - XXX - N - X**

Common Cavity No. C16-2

Flow: Inside to Out of Element

Wire Mesh Media

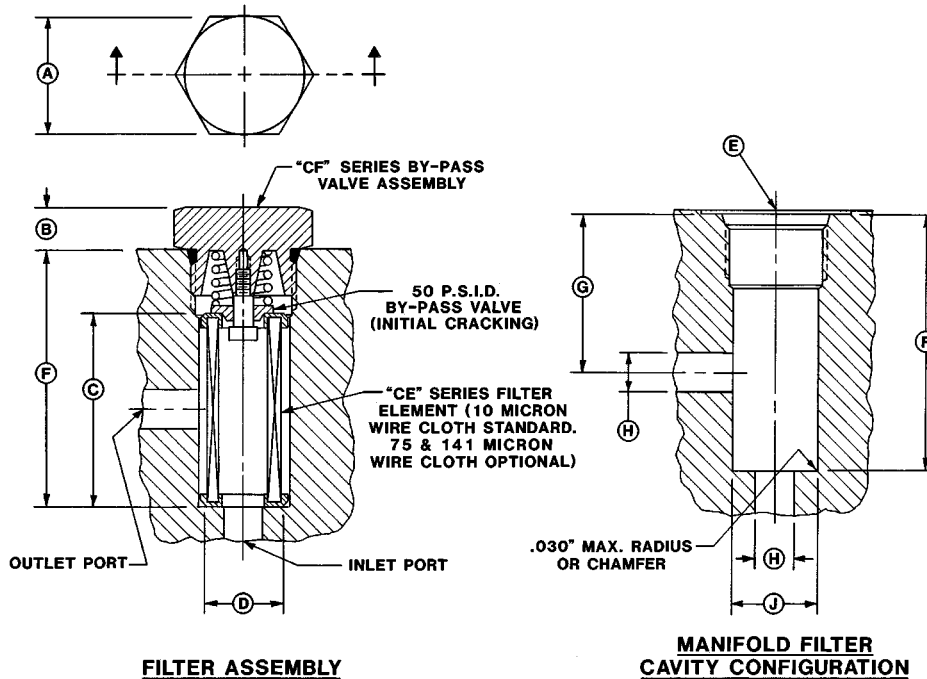
Filter Element Options	
Code	Micron
010	10 Micron
075	75 Micron
141	141 Micron

Code	Seal Type
N	Nitrile (Buna "N")
V	Fluorocarbon
E	EPR
Back Up Ring: Glass Filled Teflon	



# CF / CE SERIES MANIFOLD CARTRIDGE FILTERS

Operating Pressure: 6,000 PSI  
Flows Up To: 30 GPM



**FILTER ASSEMBLY**

**MANIFOLD FILTER  
CAVITY CONFIGURATION**

Filter Assembly Dimensions				
B/P Valve Assy. & Filter Element Part Numbers	A Hex Size	B Hex Height	C Element Length	D Element Dia.
CF-04 & CE-04-10	1.00"	.41"	1.72"	.74"
CF-12 & CE-12-10	1.50"	.50"	2.50"	1.00"
CF-30 & CE-30-10	2.13"	.65"	4.00"	1.50"

Manifold Cavity Configuration				
E SAE O-Ring Port	F Cavity Depth	G Port Depth	H Max. Port Dia.	J Cavity Dia.
-10 (7/8"-14)	2.41"	1.12" Min 1.87" Max	.266"	.781" Min .814" Max
-16 (1 5/16"-12)	3.34"	1.49" Min 2.53" Max	.531"	1.140" Min 1.187" Max
-24 (1 7/8"-12)	5.01"	1.92" Min 3.81" Max	.875"	1.750" Min 1.803" Max

## HOW TO ORDER:

By-Pass Valve Assembly Part Number
CF-04
CF-12
CF-30

Filter Element		
Part Number	Flow Capacity	Micron Rating
CE-04-10	4 GPM	10 Micron
CE-12-10	12 GPM	10 Micron
CE-30-10	30 GPM	10 Micron

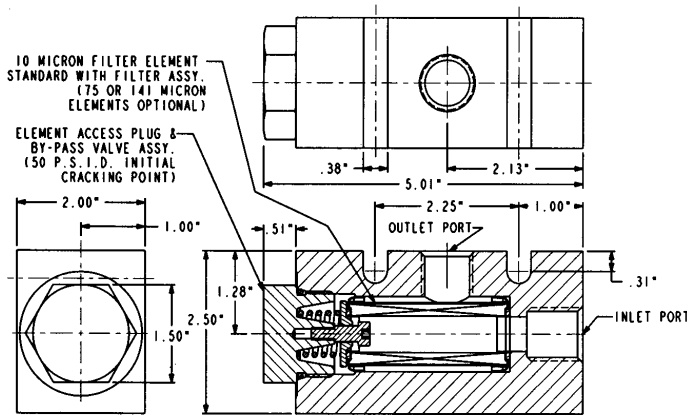
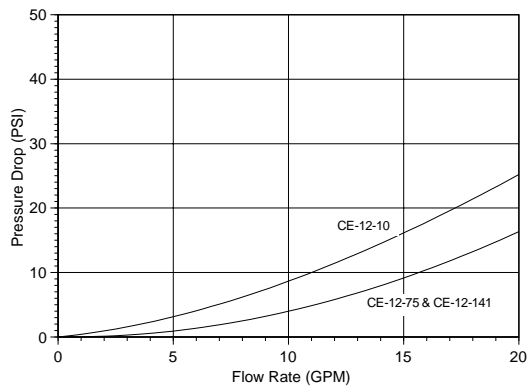
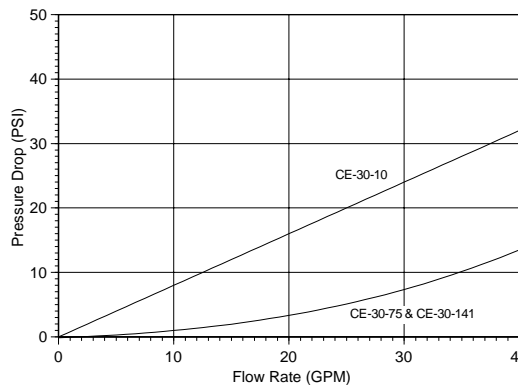
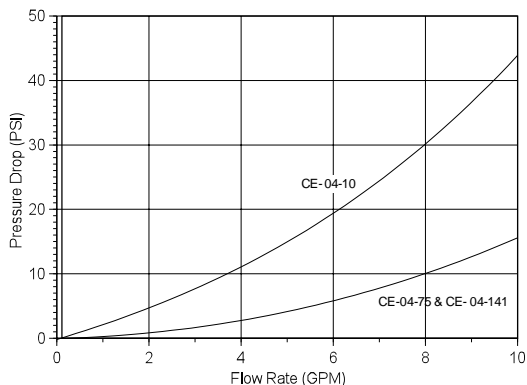
- Note:**
- Pressure drop vs. flow rate data shown on following page.
  - 10 Micron stainless steel wire cloth is standard for all three filter element sizes. 75 & 141 micron wire cloth elements are also available. To order elements containing these wire cloth media, change the last number in the filter element part number (normally -10) to -75 or -141.
  - CF/CE-Series filters are designed to be used as final filters to protect control valves, not as total system filters.



# CF-90 SERIES IN-LINE HIGH PRESSURE FILTER

- Port Size: • 1/2" NPTF
- 3/4" - 16 UN (SAE-8)
- Pressure: 3,000 PSI
- Flows Up To: 12 GPM
- By-Pass Valve Setting: 50 PSI
- Filtration: 10 Micron Stainless Steel  
Wire Cloth Standard

Average pressure drop through clean filter with 150 SUS oil at 105° F.



PRESSURE FILTERS

**Note:**

- CE-Series filter elements are compatible with petroleum base fluids, Water Glycol, Diesel Fuel, & Gasoline (except if containing alcohol). For fluids not listed, consult factory.
- Element access plug uses a Buna N O-ring as standard (for use with petroleum base fluids). Fluorocarbon O-ring optional (for use with synthetic fluids).

**HOW TO ORDER: CF - 90 - XX - XX**

Code	Inlet & Outlet Ports
05	1/2" NPTF
08	3/4" - 16 (SAE-8)

Code	Filter Element
10	10 Micron
75	75 Micron
141	141 Micron

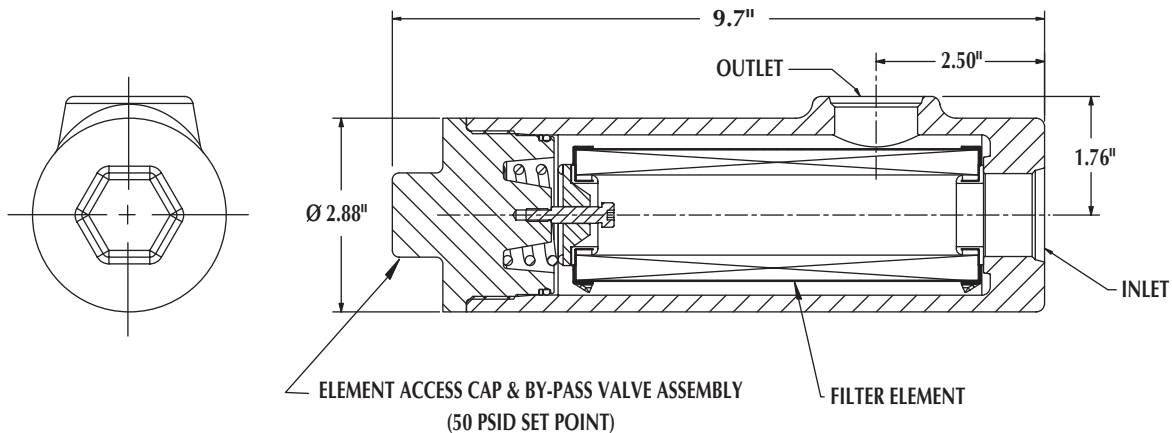
Replacement Elements (Ordered Separately)	
CE-12-10	10 Micron
CE-12-75	75 Micron
CE-12-141	141 Micron



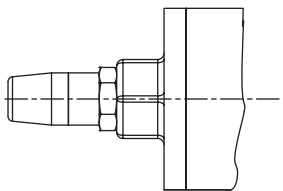


# HP3000 SERIES IN-LINE HIGH PRESSURE FILTERS WITH $\Delta P$ INDICATOR OPTION

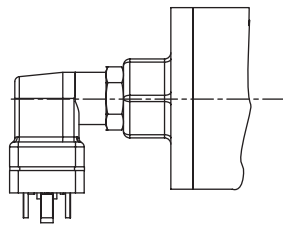
Flows Up To: 60 GPM  
 Ports Sizes: • 1" NPTF  
 • 1 1/16"-12 UN (SAE - 12)  
 • 1 5/16"-12 UN (SAE - 16)  
 Pressure: 3,000 PSI Max. Operating



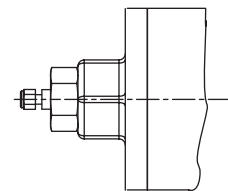
## DIFFERENTIAL PRESSURE INDICATOR OPTIONS:



DP04 SERIES VISUAL INDICATOR



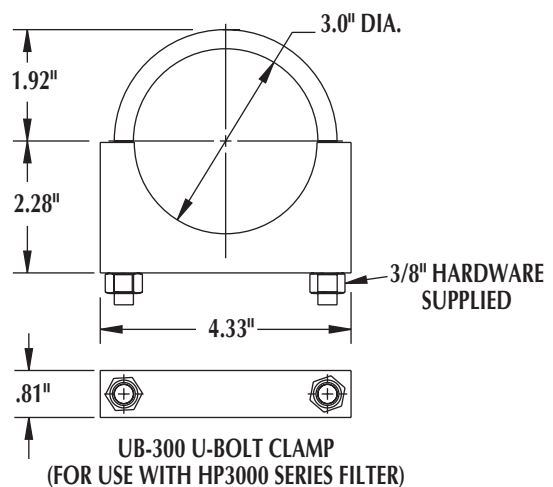
DP05 SERIES VISUAL/ELECTRICAL INDICATOR  
WITH DIN TYPE RECEPTACLE



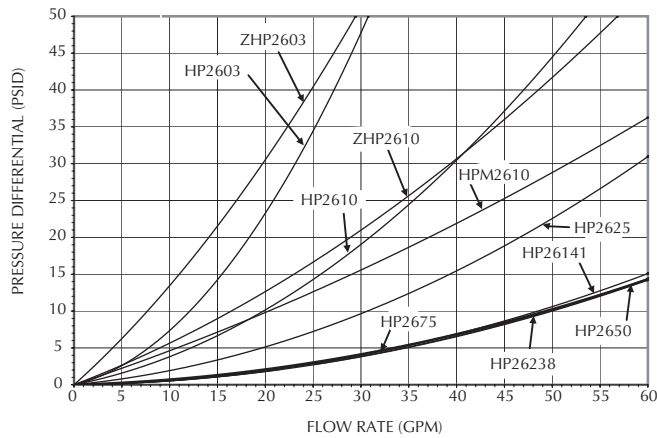
DP06 SERIES SINGLE WIRE DC INDICATOR

## Application Data:

- By-Pass Valve Setting: 50 PSID (Initial Cracking Pressure)
- Operating Temperature: Up to +250° F.
- Petroleum Base Fluids Only. Consult Factory for Synthetic Fluids.
- Ductile Iron Housing Construction
- Buna-N Seals Standard for Petroleum Base Fluids. Fluorocarbon Seals Available as an Option.
- 90° Design Permits Element Replacement Without Disassembly of Piping.



Average pressure drop through clean filter with 150 SUS oil at 105° F.



**HOW TO ORDER:**

**HP3000 - XXX - XXX - XXX - N**

Code	Inlet & Outlet Ports
N16	1" NPTF
S12	1 1/16" - 12 UN (SAE - 12)
S16	1 5/16" - 12 UN (SAE - 16)

Code	Indicator Option	Indicator Series
000	No Indicator	None
V44	Visual	DP04
D44	DC Electrical Single Wire	DP06
H44	Vis/Elec w/DIN Connector	DP05

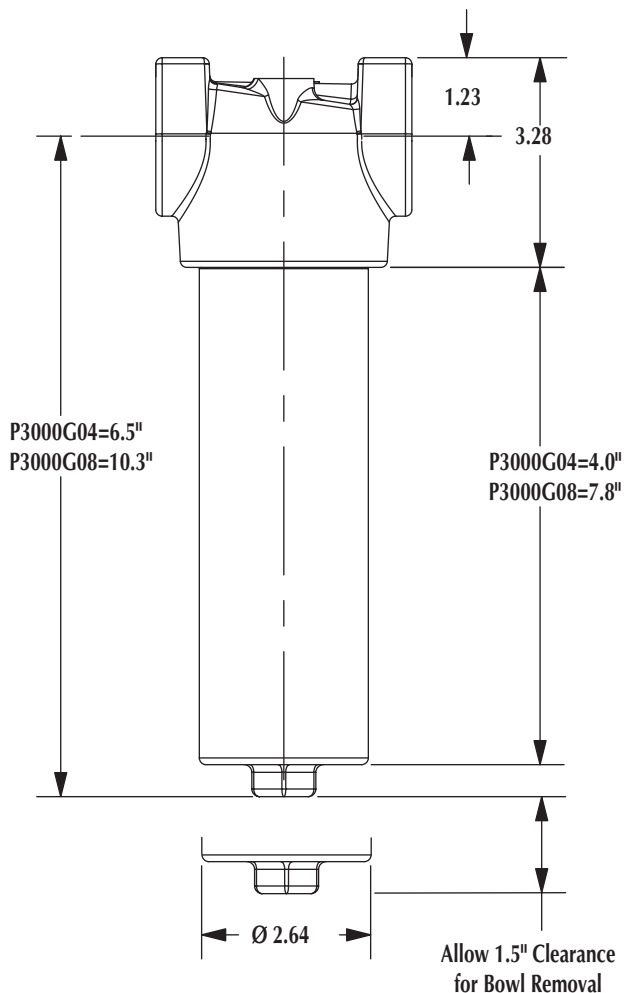
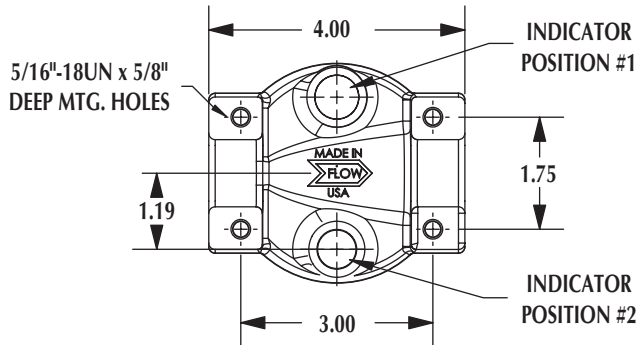
Elements		
Code	Micron, Media	Element Number
003	3 Micron, Cellulose	HP2603
03Z	3 Micron, Z-Glass	ZHP2603
010	10 Micron, Cellulose	HP2610
10M	10 Micron, Wire Cloth	HPM2610
10Z	10 Micron, Z-Glass	ZHP2610
025	25 Micron, Cellulose	HP2625
075	75 Micron, Wire Cloth	HP2675
141	141 Micron, Wire Cloth	HP26141
238	238 Micron, Wire Cloth	HP26238
560	560 Micron, Wire Cloth	HP26560

**PRESSURE FILTERS**



## P3000 SERIES PRESSURE FILTERS WITH $\Delta P$ INDICATOR OPTION

Flows Up To: 30 GPM (114 L/MIN)  
 Port Sizes: 1 1/16"-12 UN (SAE-12)  
 Max. Operating Pressure: 3,000 PSI (207 BAR)  
 Application: Inline Filtration,  
 External Charge Pump Filtration,  
 High Shock Return Line Filtration



### SPECIFICATIONS

Code Number	Removal Rating B <sub>x</sub> > 200
03H	2
03L	3
06L	6
10L	12
10H	15
20L	25
10C	N/A

#### REFERENCE

Beta<sub>x</sub> Rating of 200=99.5% Efficiency

#### PRESSURE RATING

**Maximum Operating:** 3,000 PSI (207 Bar)

**Burst Pressure:** 8,600 PSI (580 Bar)

**Rated Fatigue Pressure:** 2000 PSI (138 Bar)

#### TEMPERATURE RANGE

**Operating:** -40° F to +250° F  
 (-4° to +120° C)

#### BY-PASS SETTING OPTION:

No By-Pass or 50 PSID

#### $\Delta P$ INDICATOR OPTIONS

Visual, Single Wire DC Electrical, or  
 Electrical/Visual w/ DIN Connector

#### FLUID COMPATIBILITY

**Elements:** Suitable For Use with  
 Petroleum Base Fluids. Consul  
 Factory For Use With Other Fluids.

#### MATERIALS

**Head:** Die Cast Aluminum

**Bowl:** Anodized Aluminum (6061-T6)

**By-Pass:** Nylon

**Element Hardware:** Plated Carbon  
 Steel End Caps and Core. Epoxy  
 Endcap Adhesive .

**Filter Media:** Z-Glass Fiber Standard

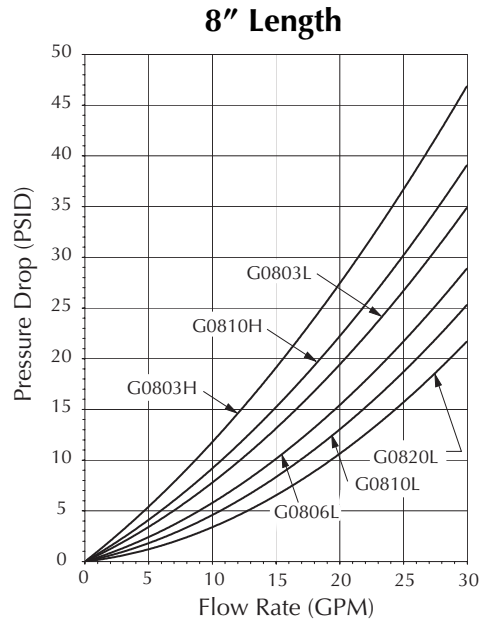
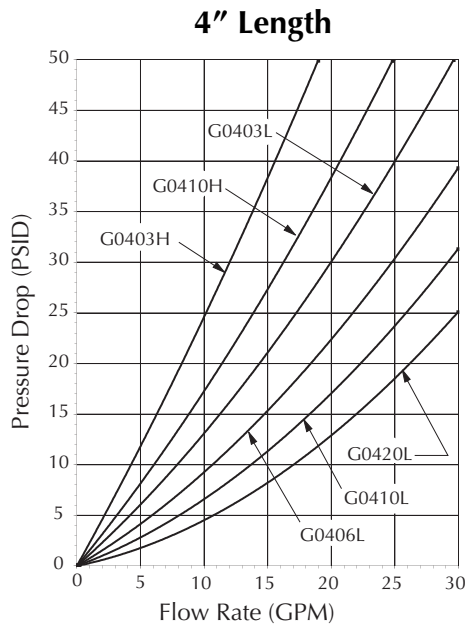
#### WEIGHT

**P3000G04:** 4.2 lbs. (2.2 Kg)

**P3000G08:** 5.2 lbs. (2.8 Kg)

# P3000 Pressure Drop Curves

Fluid Viscosity 150 SUS at 105°F (33 CS at 41°C)



PRESSURE FILTERS

**HOW TO ORDER:**

**P3000 XXX XX XXX XXX X X - G XX XXX X**

Position 1    Position 2

Code	Maximum Pressure
P3000	3,000 PSI (207 BAR)

Code	Port
S12	1 1/16"-12 UN (SAE-12)

Code	Nominal Bowl Length
04	4 Inches (100 mm)
08	8 Inches (200 mm)

Code	Indicator Option	Indicator Series
000	No Indicator	None
V44	Visual	DP04
D44	DC Electrical Single Wire	DP06
H44	Vis/Elec w/DIN Connector	DP05

Code	By-Pass
E	50 PSID (3.4 BAR)
N	No By-Pass*
*REQUIRES PROPER ELEMENT SELECTION*	

Code	Housing Seal Material
N	Buna "N"
V	Fluorocarbon

Code	Element Seal Material
N	Buna "N"
V	Fluorocarbon

Filter Element Options	
Code	Micron-Media-Collapse
03L	3 Micron, Z-GLASS, 150 PSID (20.7 BAR)
03H	3 Micron, Z-GLASS, 3,000 PSID (207 BAR)
06L	6 Micron, Z-GLASS, 150 PSID (20.7 BAR)
10L	10 Micron, Z-GLASS, 150 PSID (20.7 BAR)
10H	10 Micron, Z-GLASS, 3,000 PSID (207 BAR)
20L	20 Micron, Z-GLASS, 150 PSID (20.7 BAR)

Code	Nominal Filter Element Length
04	4 Inches (100 mm)
08	8 Inches (200 mm)

Element Series	
"G" Series	

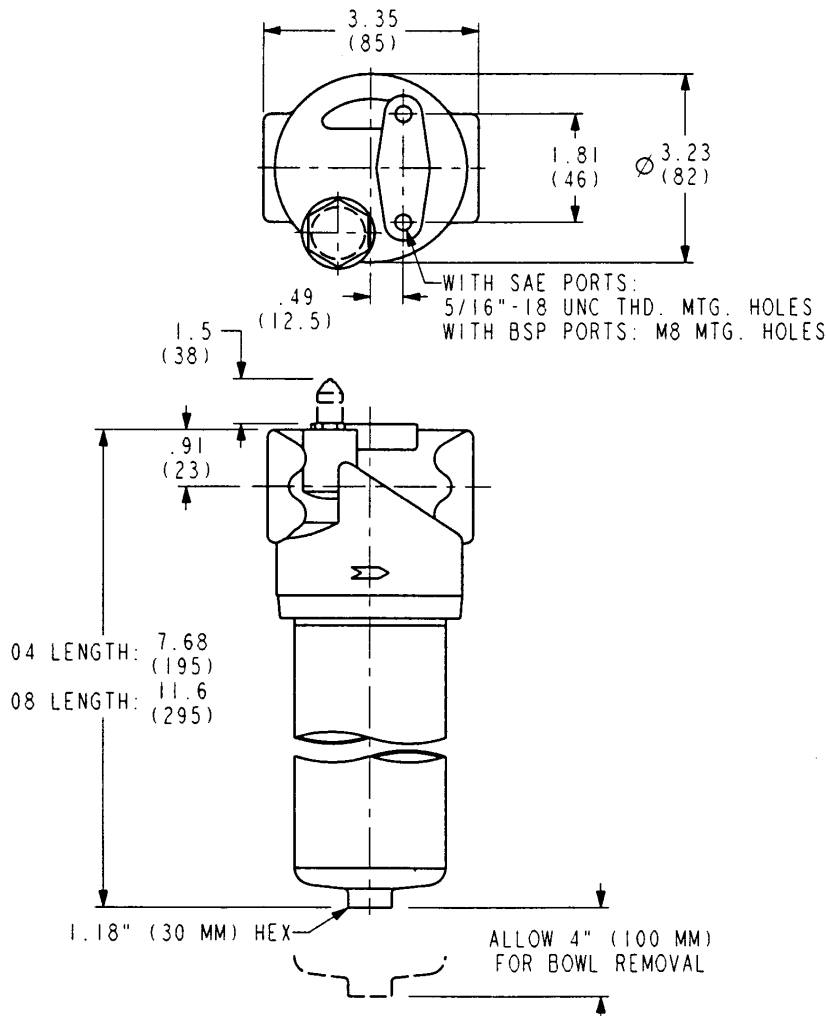




## P6 SERIES PRESSURE FILTERS WITH $\Delta P$ INDICATOR OPTION

Flows Up To: 30 GPM (114 L/MIN)  
 Port Sizes: 1 1/16"-12UN (SAE-12)  
 3/4" BSP (G 3/4"-14)  
 Max. Operating Pressure: 6,000 PSI (414 BAR)  
 Application: Suitable for all conventional  
 hydraulic fluids except  
 phosphate esters

PRESSURE FILTERS



### SPECIFICATIONS

Code Number	Removal Rating $B_x > 200$
03H	2
03L	3
06L	6
10L	12
10H	15
20L	25

#### REFERENCE

Beta<sub>x</sub> Rating of 200=99.5% Efficiency

#### PRESSURE RATING

**Maximum Operating:** 6,000 PSI (414 Bar)

**Burst Pressure:** 18,250 PSI (1,260 Bar)

#### TEMPERATURE RANGE

**Operating:** -15° F to +230° F  
 (-26° to +110° C)

#### BY-PASS SETTING OPTION:

No By-Pass or 90 PSID

#### $\Delta P$ INDICATOR OPTIONS

Visual or

**Ele/Visual w/ DIN connector**

(DIN 43650; IP65)

1NC, 1NC & Com SPDT Switch

125-250 Vac @ 5Amps Res or Ind.

15-30-50-125 Vdc @ 10-5-1-0.5 A  
 respectively Res or Ind.

#### FLUID COMPATIBILITY

**Elements:** Suitable For All  
 Conventional Hydraulic Fluids  
 Except Phosphate Esters

#### MATERIAL

**Head:** Cast Iron

**Bowl:** Steel

**Element Hardware:** Plated Carbon  
 Steel End Caps, and Core

**Filter Media:** Z-Glass Fiber, Epoxy  
 End Cap Adhesive

#### WEIGHT

**P6XXX04:** 10.2 lbs. (4.6 Kg)

**P6XXX08:** 11.5 lbs. (5.2 Kg)



# P6 SERIES PRESSURE FILTERS

HOW TO ORDER: →

**P6 XXX XX X X X - G XX XXX X**

**Housing**      **Element**

Code	Maximum Pressure
P6	6,000 PSI (414 BAR)

Code	Port
S12	1 1/16"-12 UN (SAE-12)
B12	3/4" BSP (G 3/4"-14)

Code	Nominal Bowl Length
04	4 Inches (100 mm)
08	8 Inches (200 mm)

Code	Indicator Type
N	No Indicator
V	Visual ΔP**
E	Electrical/Visual ΔP**

\*\*WITH BYPASS 75 PSID (5.2 BAR) • WITHOUT BYPASS 120 PSID (8.3 BAR)

Code	By-Pass
E	90 PSID (6 BAR)
N	No By-Pass*

\*REQUIRES PROPER ELEMENT SELECTION\*

Code	Housing Seal Material
N	Buna "N"
V	Fluorocarbon

Code	Element Seal Material
N	Buna "N"
V	Fluorocarbon

Filter Element Options	
Code	Micron-Media-Collapse
03L	3 Micron, Z-GLASS, 150 PSID (20.7 BAR)
03H	3 Micron, Z-GLASS, 3,000 PSID (207 BAR)
06L	6 Micron, Z-GLASS, 150 PSID (20.7 BAR)
10L	10 Micron, Z-GLASS, 150 PSID (20.7 BAR)
10H	10 Micron, Z-GLASS, 3,000 PSID (207 BAR)
20L	20 Micron, Z-GLASS, 150 PSID (20.7 BAR)

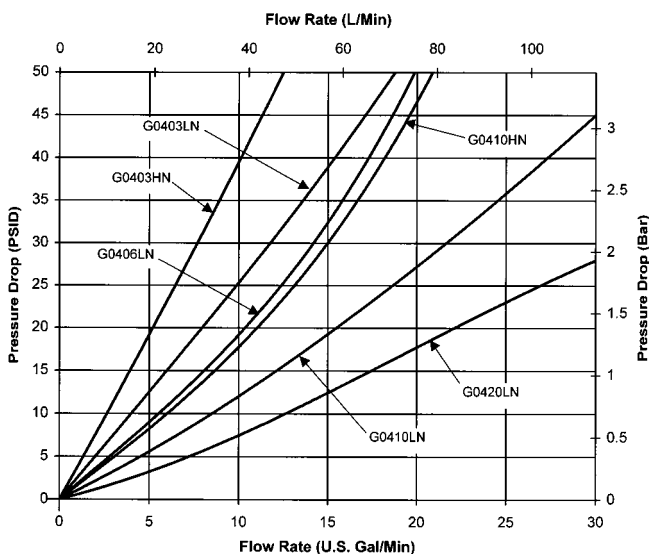
Code	Nominal Filter Element Length
04	4 Inches (100 mm)
08	8 Inches (200 mm)

Element Series	
"G" Series	

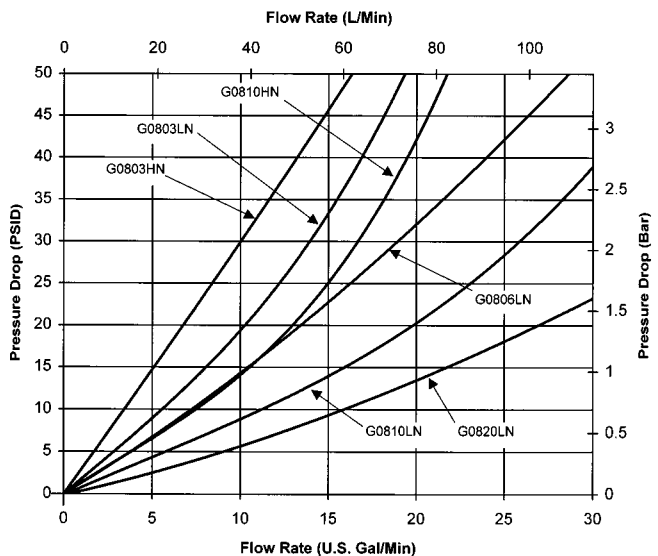
PRESSURE FILTERS

## Average Pressure Drop Through Clean Filter Assembly With 150 SUS Oil at 100°F (33 CS at 40°C)

For 3/4" Ports and 4" (100 MM) Element



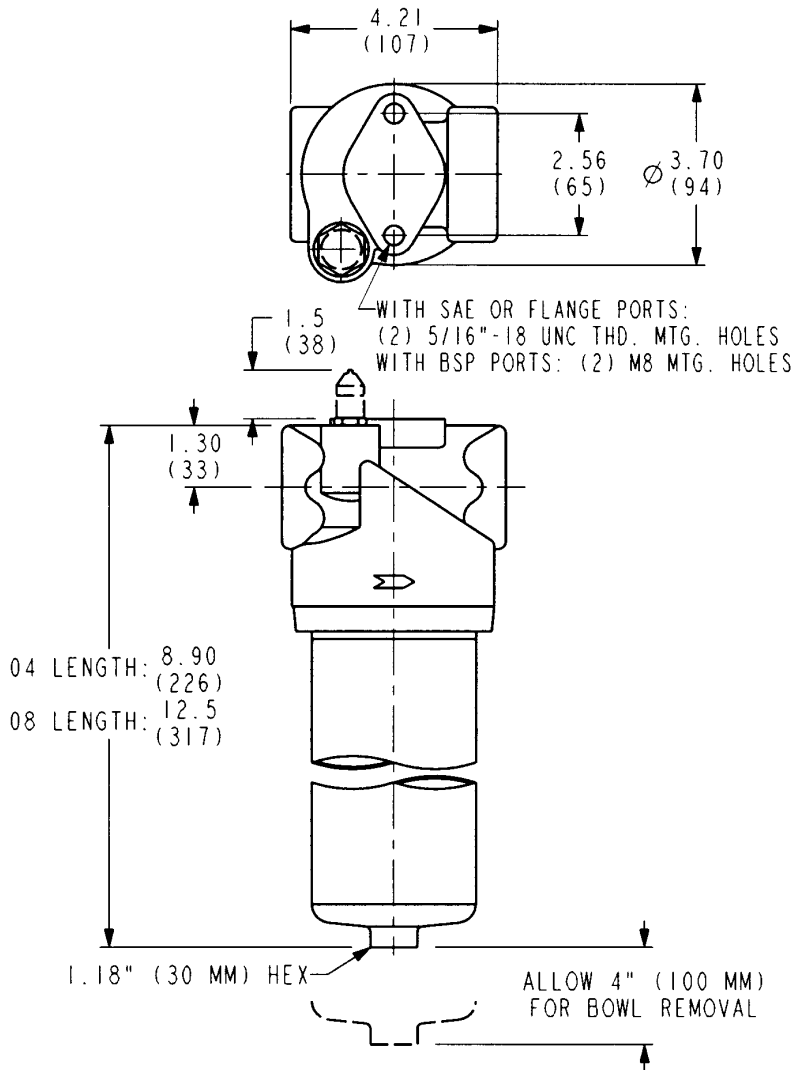
For 3/4" Ports and 8" (200 MM) Element





## S6 SERIES PRESSURE FILTERS WITH $\Delta P$ INDICATOR OPTION

Flows Up To: 65 GPM (246 L/MIN)  
 Port Sizes: 1 1/16"-12UN (SAE-12) & 1 5/16"-12UN (SAE-16)  
 3/4" BSP (G3/4"-14) & 1" BSP (1"-11) Max.  
 1" SAE Flange  
 Operating Pressure: 6,000 PSI (414 BAR)  
 Application: Suitable for all conventional  
 hydraulic fluids except  
 phosphate esters



### SPECIFICATIONS

Code Number	Removal Rating $B_x > 200$
03H	2
03L	3
06L	6
10L	12
10H	15
20L	25

#### REFERENCE

Beta<sub>x</sub> Rating of 200=99.5% Efficiency

#### PRESSURE RATING

**Maximum Operating:** 6,000 PSI (414 Bar)

**Burst Pressure:** 18,250 PSI (1,260 Bar)

#### TEMPERATURE RANGE

**Operating:** -15° F to +230° F  
 (-26° to +110° C)

#### BY-PASS SETTING OPTION:

No Bypass or 90 PSID

#### $\Delta P$ INDICATOR OPTIONS

Visual or

**Ele/Visual w/ DIN connector**

(DIN 43650; IP65)

1NC, 1NC & Com SPDT Switch

125-250 Vac @ 5Amps Res or Ind.

15-30-50-125 Vdc @ 10-5-1-0.5 A  
 respectively Res or Ind.

#### FLUID COMPATIBILITY

**Elements:** Suitable For All  
 Conventional Hydraulic Fluids  
 Except Phosphate Esters

#### MATERIAL

**Head:** Cast Iron

**Bowl:** Steel

**Element Hardware:** Plated Carbon  
 Steel End Caps, and Core

**Filter Media:** Z-Glass Fiber, Epoxy  
 End Cap Adhesive

#### WEIGHT

**S6XXX04:** 14.6 lbs. (6.6 Kg)

**S6XXX08:** 18.1 lbs. (8.2 Kg)

# S6 SERIES PRESSURE FILTERS

HOW TO ORDER: →

S6 XXX XX X X X - S XX XXX X

Housing Element

Code	Maximum Pressure
S6	6,000 PSI (414 BAR)

Code	Port
S12	1 1/16"-12 UN (SAE-12)
S16	1 5/16"-12 UN (SAE-16)
B12	3/4" BSP (G 3/4"-14)
B16	1" BSP (G 1"-11)
D16	1" SAE Flange, 3,000 PSI (207 BAR)

Code	Nominal Bowl Length
04	4 Inches (100 mm)
08	8 Inches (200 mm)

Code	Indicator Type
N	No Indicator
V	Visual ΔP**
E	Electrical/Visual ΔP**

\*\*WITH BY-PASS 75 PSID (5.2 BAR) • WITHOUT BY-PASS 120 PSID (8.3 BAR)

Code	By-Pass/Reverse Flow Valve
E	90 PSID (6 BAR) By-Pass/No Reverse Flow Valve
N	No By-Pass/No Reverse Flow Valve*
R	No By-Pass/Reverse Flow Valve*
P	90 PSID (6 BAR) By-Pass/Reverse Flow Valve

\*REQUIRES PROPER ELEMENT SELECTION\*

Code	Housing Seal Material
N	Buna "N"
V	Fluorocarbon

Code	Element Seal Material
N	Buna "N"
V	Fluorocarbon

Filter Element Options	
Code	Micron-Media-Collapse
03L	3 Micron, Z-GLASS, 300 PSID (20.7 BAR)
03H	3 Micron, Z-GLASS, 3,000 PSID (207 BAR)
06L	6 Micron, Z-GLASS, 300 PSID (20.7 BAR)
10L	10 Micron, Z-GLASS, 300 PSID (20.7 BAR)
10H	10 Micron, Z-GLASS, 3,000 PSID (207 BAR)
20L	20 Micron, Z-GLASS, 300 PSID (20.7 BAR)

Code	Nominal Filter Element Length
04	4 Inches (100 mm)
08	8 Inches (200 mm)

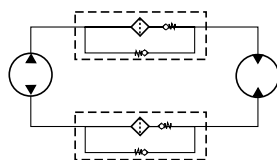
Element Series	
"S" Series	

PRESSURE FILTERS

## Reverse Flow

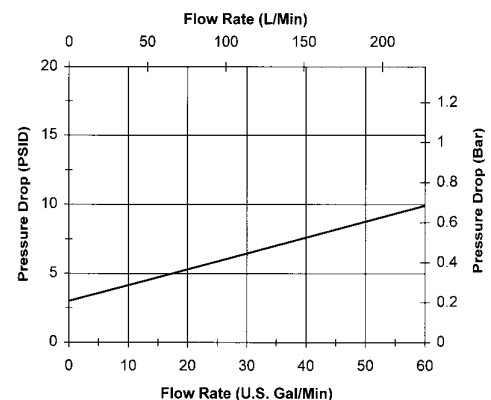
For hydrostatic drives and other systems where reverse flow is required, a valve is incorporated which allows fluid to pass through the element in one direction, and to by-pass the element when flow is reversed.

1. Rugged one piece steel body design that is built to last. Reverse Flow Valve is a spool/disc valve caged in a high strength machined steel body.
2. Applications requiring reverse flow to be mounted vertically, bowl down.



Reverse Flow Schematic

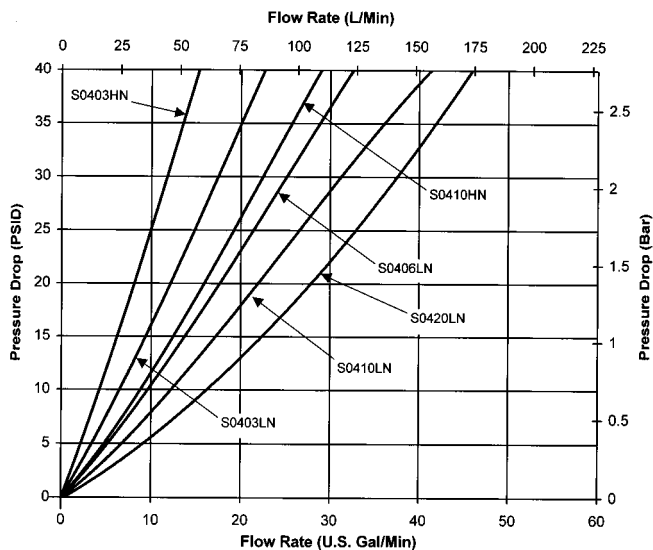
Reverse Flow Valve Pressure Drop  
With 150 SUS Oil at 100°F (32 cSt at 40°C)



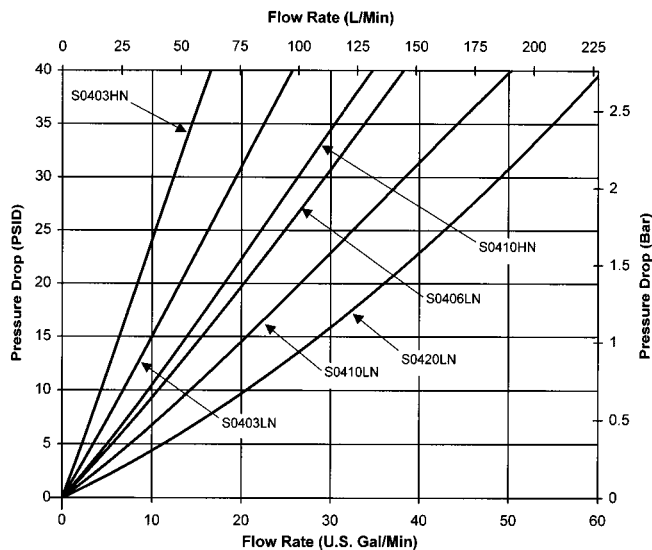
# S6 Pressure Drop Curves

Fluid Viscosity 150 SUS at 100°F (33 CS at 40°C)

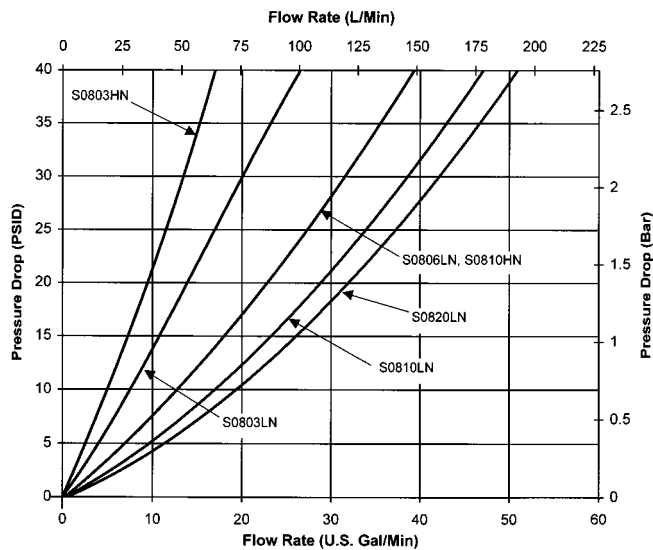
For 3/4" Ports and 4" (100 MM) Element



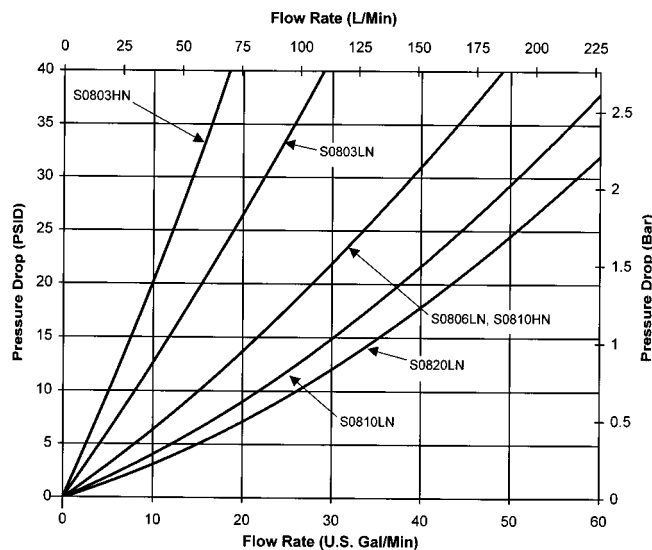
For 1" Ports and 4" (100 MM) Element



For 3/4" Ports and 8" (200 MM) Element



For 1" Ports and 8" (200 MM) Element



PRESSURE FILTERS



## W1200 SERIES PRESSURE FILTERS WITH $\Delta P$ INDICATOR OPTION

Flows Up To: 120 GPM (454 L/MIN)

Port Sizes: 1 1/4" & 1 1/2" NPTF

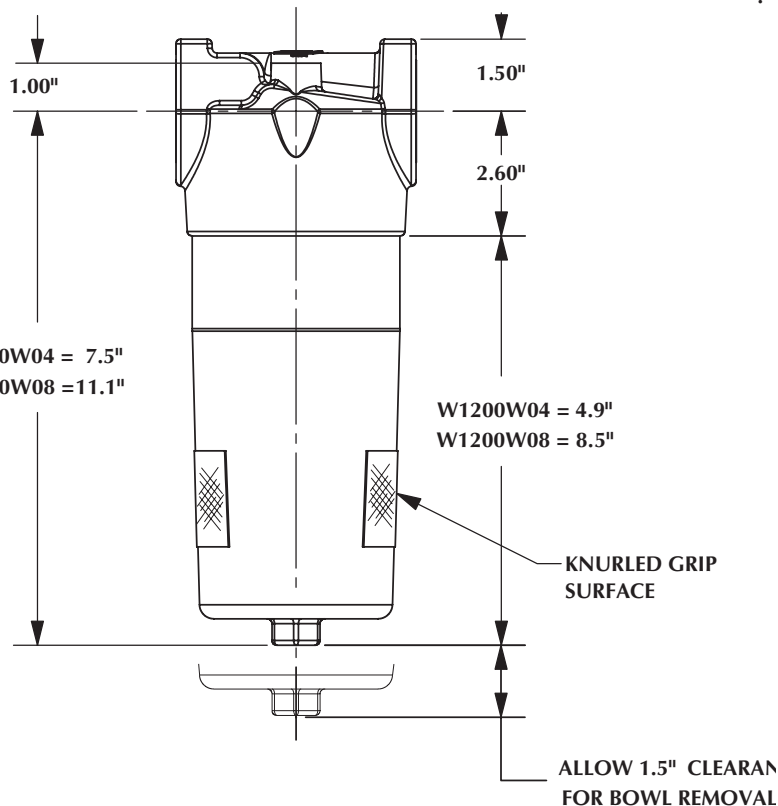
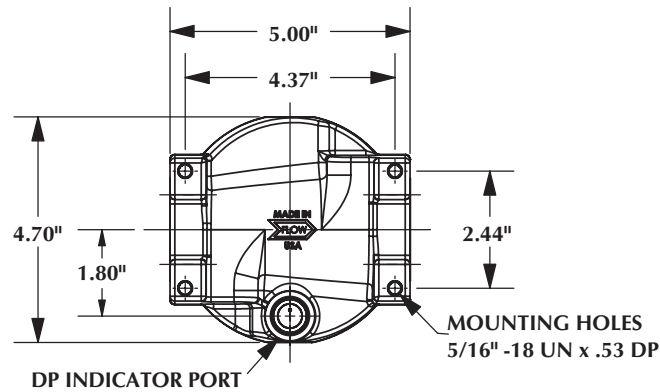
1 5/8"-12UN (SAE-20)

1 7/8"-12UN (SAE-24)

Max. Operating Pressure: 1,200 PSI (83 BAR)

Application: Inline Filtration

High Shock Return Line Filtration



### SPECIFICATIONS

Code Number	Removal Rating B <sub>x</sub> > 200
03H	2
03L	3
06L	6
10L	12
10H	15
20L	25

#### REFERENCE

Beta<sub>x</sub> Rating of 200=99.5% Efficiency

#### PRESSURE RATING

**Maximum Operating:** 1,200 PSI (83 Bar)

**Burst Pressure:** 3,000 PSI (206 Bar)

**Rated Fatigue Pressure:**

0-1000-0 PSI for 1,000,000 Cycles  
Per NFPA T2.6.1 R2-2000

#### TEMPERATURE RANGE

**Operating:** -40° F to +250° F  
(-4° to +120° C)

#### BY-PASS SETTING OPTION:

No By-Pass or 50 PSID

#### $\Delta P$ INDICATOR OPTIONS

Visual, Single Wire DC Electrical, or  
Electrical/Visual w/ DIN Connector

#### FLUID COMPATIBILITY

**Elements:** Suitable For Use with  
Petroleum Base Fluids. Consult  
Factory For Use With Other Fluids.

#### MATERIALS

**Head:** Die Cast Aluminum

**Bowl:** Anodized Die Cast Aluminum

**By-Pass:** Nylon

**Element Hardware:** Plated Carbon  
Steel End Caps and Core. Epoxy  
Endcap Adhesive.

**Filter Media:** Z-Glass Fiber Standard

#### WEIGHT

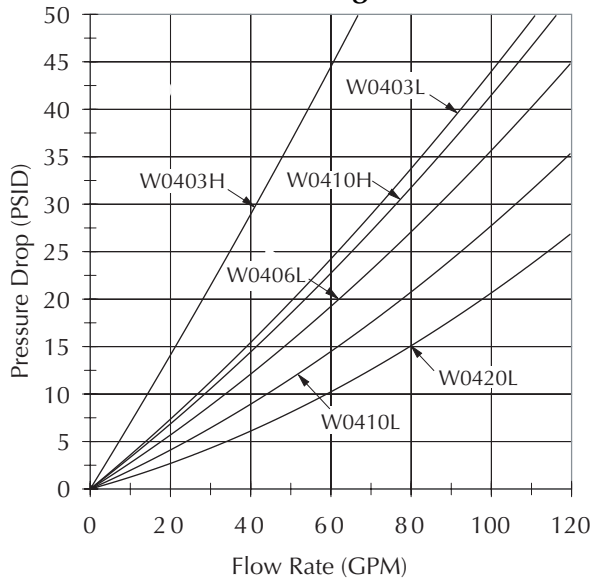
**P3000G04:** 6.6 lbs. (3 Kg)

**P3000G08:** 8.8 lbs. (4 Kg)

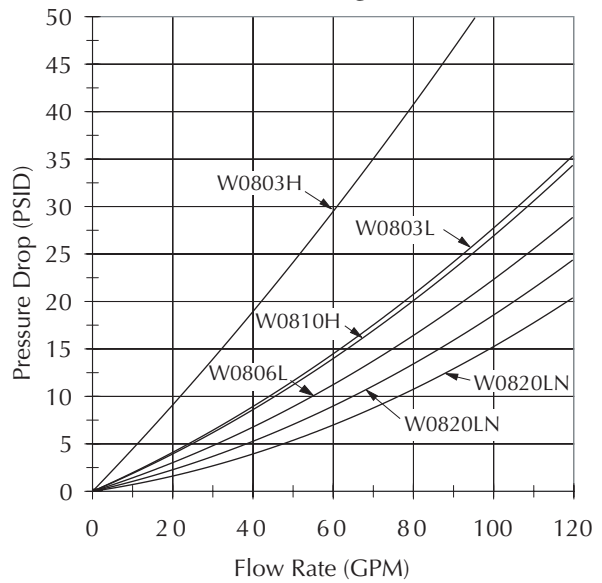
# W1200 Pressure Drop Curves

Fluid Viscosity 150 SUS at 105°F (34 CS at 40°C)

4" Length



8" Length



PRESSURE FILTERS

**HOW TO ORDER:** W1200 XXX XX X XX XX X - W XX XXX X

Code	Maximum Pressure
W1200	1,200 PSI (83 BAR)

Code	Port
N20	1 1/4" NPTF
N24	1 1/2" NPTF
S20	1 5/8" - 12UN (SAE-20)
S24	1 7/8" - 12UN (SAE-24)

Code	Nominal Bowl Length
04	4 Inches (100 mm)
08	8 Inches (200 mm)

Code	ΔP Indicator Type	Indicator Series
0	No Indicator	None
V	Visual	DP04
D	DC Electrical Single Wire	DP06
H	Vis/Elec w/DIN Connector	DP05

Code	ΔP Indicator Setting
00	No Indicator
44	44 PSID

Code	By-Pass
00	No By Pass *
50	50 PSID (3.4 BAR)
* Proper Element Selection Required	

Code	Element Seal Material
N	Buna "N"
V	Fluorocarbon

Filter Element Options	
Code	Micron-Media-Collapse
03L	3 Micron, Z-GLASS, 150 PSID (20.7 BAR)
03H	3 Micron, Z-GLASS, 3,000 PSID (207 BAR)
06L	6 Micron, Z-GLASS, 150 PSID (20.7 BAR)
10L	10 Micron, Z-GLASS, 150 PSID (20.7 BAR)
10H	10 Micron, Z-GLASS, 3,000 PSID (207 BAR)
20L	20 Micron, Z-GLASS, 150 PSID (20.7 BAR)

Code	Nominal Filter Element Length
04	4 Inches (100 mm)
08	8 Inches (200 mm)

Element Series	
"W" Series	

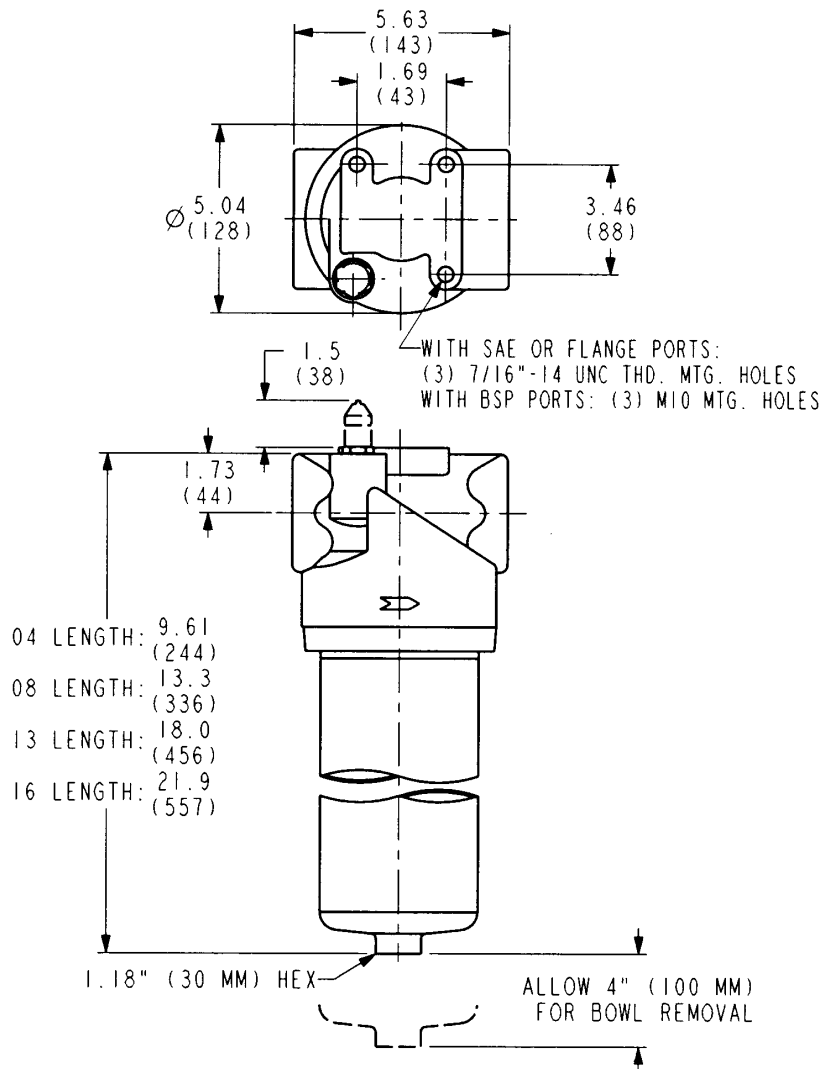
Code	Housing Seal Material
N	Buna "N"
V	Fluorocarbon



## W6 SERIES PRESSURE FILTERS WITH $\Delta P$ INDICATOR OPTION

Flows Up To: 120 GPM (454 L/MIN)  
 Port Sizes: 1 5/8"-12UN (SAE-20)  
 1 7/8"-12UN (SAE-24)  
 1 1/4" BSP (G1 1/4"-11)  
 1 1/2" BSP (G1 1/2"-11)  
 1 1/2" SAE Flange (3000 PSI)  
 1 1/4" SAE Flange (6000 PSI)

Max. Operating Pressure: 6,000 PSI (414 BAR)  
 Application: Suitable for all conventional  
 hydraulic fluids except  
 phosphate esters



### SPECIFICATIONS

Code Number	Removal Rating B <sub>x</sub> > 200
03H	2
03L	3
06L	6
10L	12
10H	15
20L	25

#### REFERENCE

Beta<sub>x</sub> Rating of 200=99.5% Efficiency

#### PRESSURE RATING

**Maximum Operating:** 6,000 PSI (414 Bar)

**Burst Pressure:** 18,250 PSI (1,260 Bar)

#### TEMPERATURE RANGE

**Operating:** -15° F to +230° F

(-26° to +110° C)

#### BY-PASS SETTING OPTION:

No Bypass or 50 PSID

#### $\Delta P$ INDICATOR OPTIONS

Visual or

**Ele/Visual w/ DIN connector**

(DIN 43650; IP65)

1NC, 1NC & Com SPDT Switch

125-250 Vac @ 5Amps Res or Ind.

15-30-50-125 Vdc @ 10-5-1-0.5 A  
 respectively Res or Ind.

#### FLUID COMPATIBILITY

**Elements:** Suitable For All

Conventional Hydraulic Fluids

Except Phosphate Esters

#### MATERIAL

**Head:** Cast Iron

**Bowl:** Steel

**Element Hardware:** Plated Carbon

Steel End Caps, and Core

**Filter Media:** Z-Glass Fiber, Epoxy

End Cap Adhesive

#### WEIGHT

**W6XXX04:** 25 lbs. (11 Kg)

**W6XXX08:** 31 lbs. (13.9 Kg)

**W6XXX13:** 38 lbs. (17.2 Kg)

**W6XXX16:** 49 lbs. (22 Kg)



# W6 SERIES PRESSURE FILTERS

**HOW TO ORDER:** → **W6 XXX XX X X X - W XX XXX X**

**Housing**                      **Element**

Code	Maximum Pressure
W6	6,000 PSI (414 BAR)

Code	Port
S20	1 5/8"-12 UN (SAE-20)
S24	1 7/8"-12 UN (SAE-24)
B20	1 1/4" BSP (G1 1/4"-11)
B24	1 1/2" BSP (G1 1/2"-11)
D24	1 1/2" SAE Flange. 3000 PSI (207 BAR)
E20	1 1/4" SAE Flange. 6000 PSI (414 BAR)

Code	Nominal Bowl Length
04	4 Inches (100 mm)
08	8 Inches (200 mm)
13	13 Inches (300 mm)
16	16 Inches (400 mm)

Code	Indicator Type
N	No Indicator
V	Visual ΔP**
E	Electrical/Visual ΔP**

\*\*WITH BY-PASS 75 PSID ( 5.2 BAR) • WITHOUT BY-PASS 120 PSID (8.3 BAR)

Code	By-Pass/Reverse Flow Valve
E	90 PSID (6 BAR) By-Pass/No Reverse Flow Valve
N	No By-Pass/No Reverse Flow Valve*
R	No By-Pass/Reverse Flow Valve*
P	90 PSID (6 BAR) By-Pass/Reverse Flow Valve

\*REQUIRES PROPER ELEMENT SELECTION\*

Code	Housing Seal Material
N	Buna "N"
V	Fluorocarbon

Code	Element Seal Material
N	Buna "N"
V	Fluorocarbon

Filter Element Options	
Code	Micron-Media-Collapse
03L	3 Micron, Z-GLASS, 150 PSID (20.7 BAR)
03H	3 Micron, Z-GLASS, 3,000 PSID (207 BAR)
06L	6 Micron, Z-GLASS, 150 PSID (20.7 BAR)
10L	10 Micron, Z-GLASS, 150 PSID (20.7 BAR)
10H	10 Micron, Z-GLASS, 3,000 PSID (207 BAR)
20L	20 Micron, Z-GLASS, 150 PSID (20.7 BAR)

Code	Nominal Filter Element Length
04	4 Inches (100 mm)
08	8 Inches (200 mm)
13	13 Inches (300 mm)
16	16 Inches (400 mm)

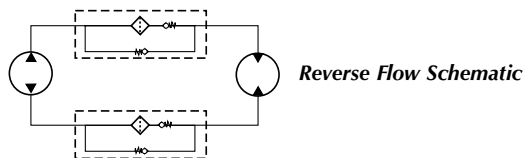
Element Series	
"W" Series	

PRESSURE FILTERS

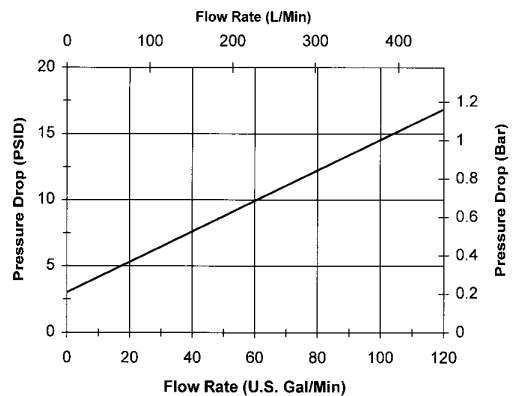
## Reverse Flow

For hydrostatic drives and other systems where reverse flow is required, a valve is incorporated which allows fluid to pass through the element in one direction, and to by-pass the element when flow is reversed.

1. Rugged one piece steel body design that is built to last. Reverse Flow Valve is a spool/disc valve caged in a high strength machined steel body.
2. Applications requiring reverse flow to be mounted vertically, bowl down.



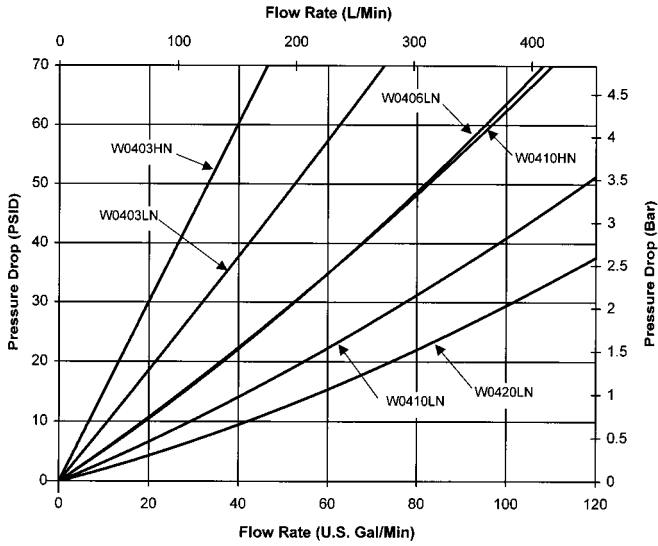
**Reverse Flow Valve Pressure Drop**  
With 150 SUS Oil at 100°F (32 cSt at 40°C)



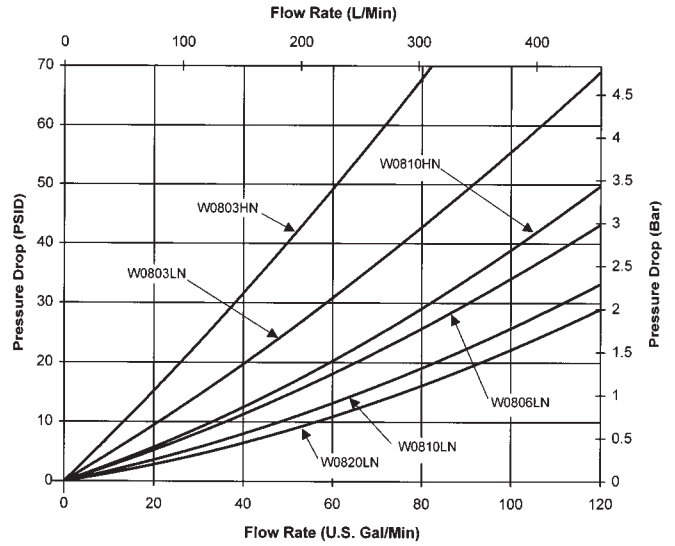
# W6 Pressure Drop Curves

Fluid Viscosity 150 SUS at 100°F (33 CS at 40°C)

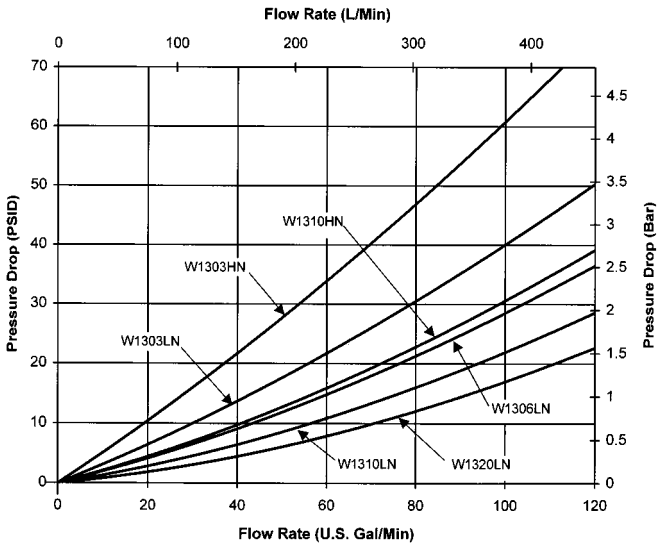
For 1 1/4" Ports and 4" (100 MM) Element



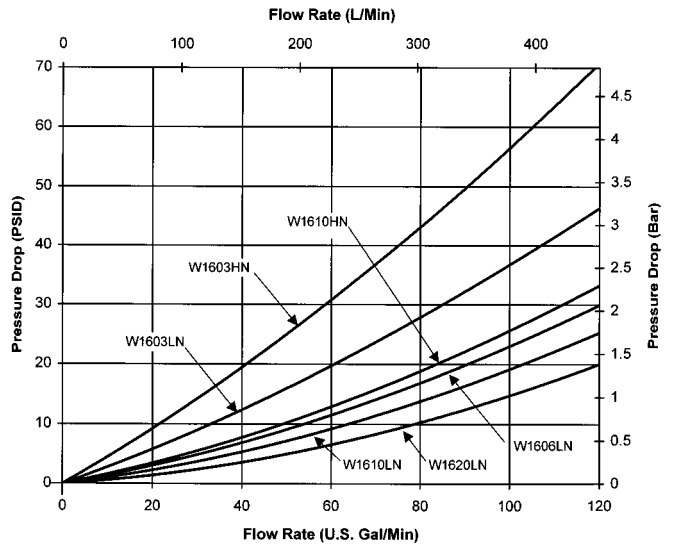
For 1 1/4" Ports and 8" (200 MM) Element



For 1 1/4" Ports and 13" (300 MM) Element



For 1 1/4" Ports and 16" (400 MM) Element

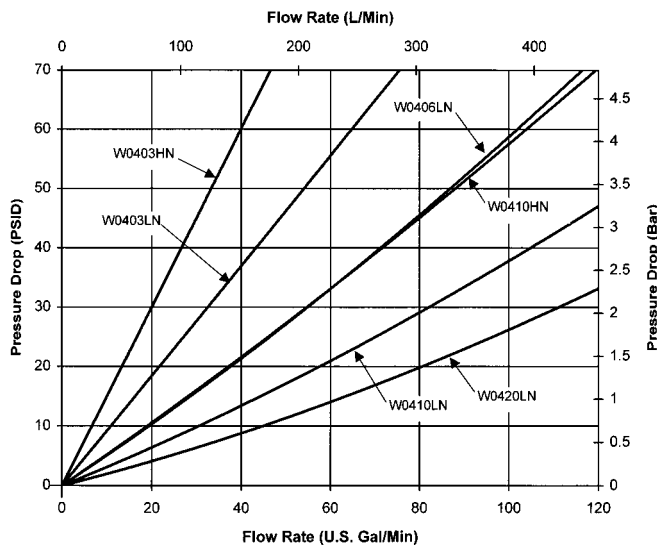


PRESSURE FILTERS

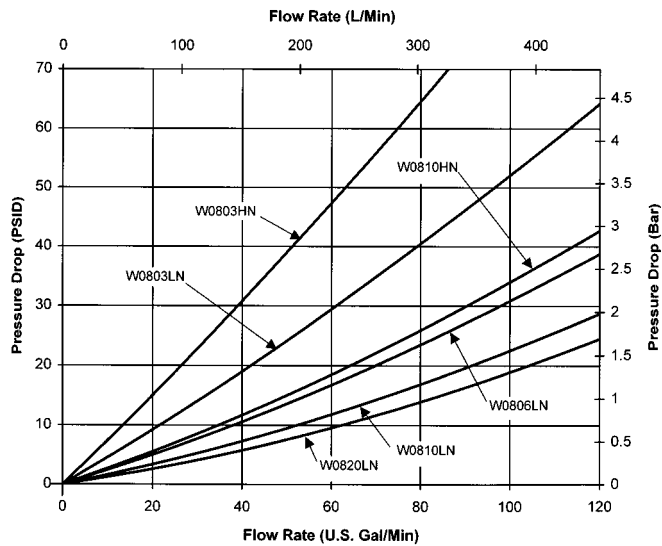
# W6 Pressure Drop Curves

Fluid Viscosity 150 SUS at 100°F (33 CS at 40°C)

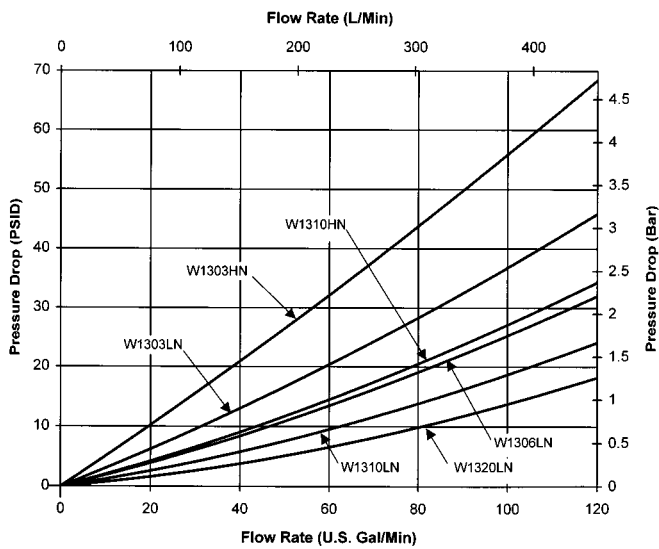
For 1 1/2" Ports and 4" (100 MM) Element



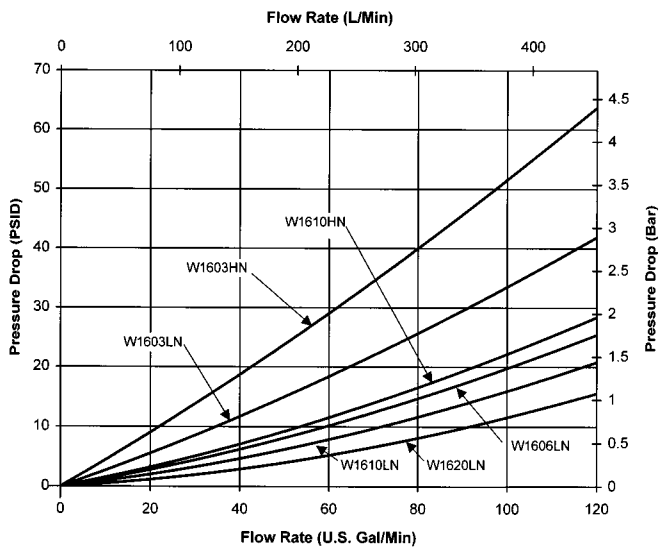
For 1 1/2" Ports and 8" (200 MM) Element



For 1 1/2" Ports and 13" (300 MM) Element



For 1 1/2" Ports and 16" (400 MM) Element



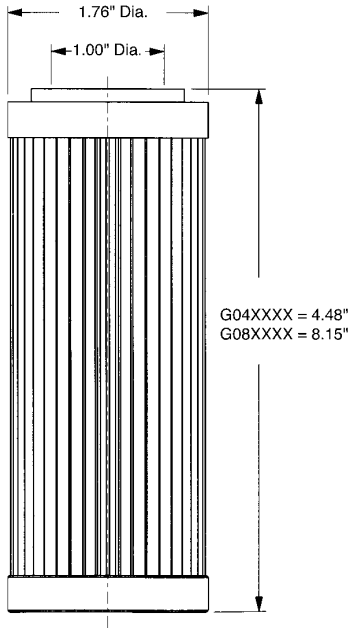
PRESSURE FILTERS



# G SERIES ELEMENTS

## PALL 9020/9021 INTERCHANGE

Media: Zinga Synthetic Z-Glass Media  
 $B_x > 200$  Absolute Filtration  
 Application: P3000 & P6 Series Pressure Filters  
 Temperature: Nitrile Seals -45°F to +225°F  
 Fluorocarbon Seals -20°F to +275°F



150 PSID RATED ELEMENTS		
(For Use in Filters with Bypass Valve Only)		
ZINGA P/N	$B_x > 200$	PALL P/N
G0403LN	3 Micron	HC9020FDP4H
G0406LN	6 Micron	HC9020FDN4H
G0410LN	10 Micron	HC9020FDS4H
G0420LN	20 Micron	HC9020FDT4H
G0803LN	3 Micron	HC9020FDP8H
G0806LN	6 Micron	HC9020FDN8H
G0810LN	10 Micron	HC9020FDS8H
G0820LN	20 Micron	HC9020FDT4H

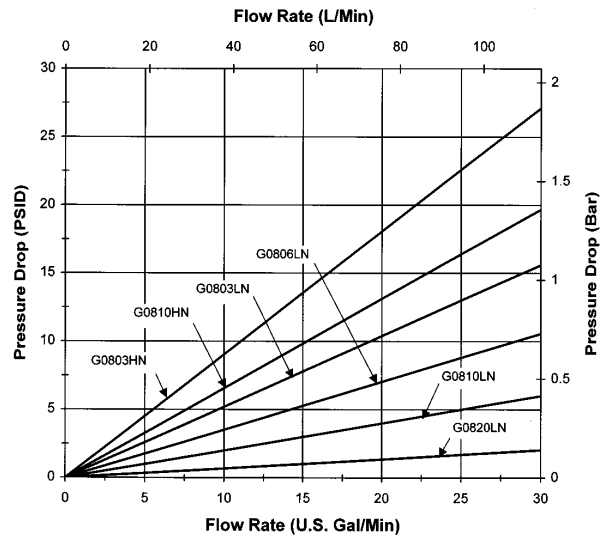
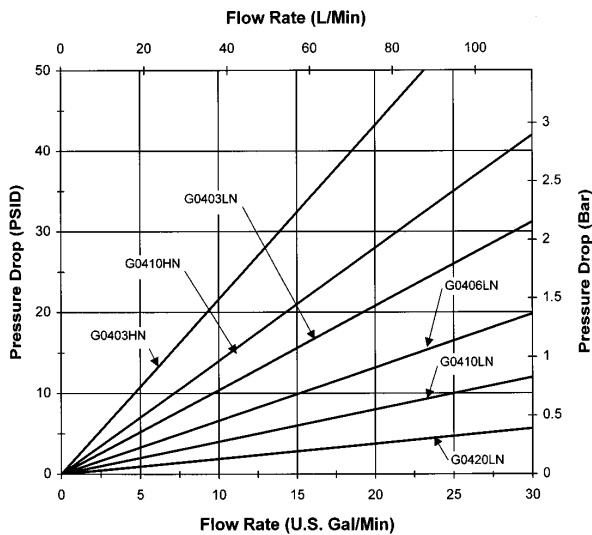
Buna-N Seals Standard. Replace "N" in P/N with "V" for Fluorocarbon.

3000 PSID RATED ELEMENTS		
ZINGA P/N	$B_x > 200$	PALL P/N
G0403HN	3 Micron	HC9021FUP4H
G0410HN	10 Micron	HC9021FUT4H
G0803HN	3 Micron	HC9021FUP8H
G0810HN	10 Micron	HC9021FUT8H

Buna-N Seals Standard. Replace "N" in P/N with "V" for Fluorocarbon.

PRESSURE FILTERS

Average Pressure Drop Through Clean Element  
 With 150 SUS Oil At 100° F (32 cSt at 40° C)





# S SERIES ELEMENTS

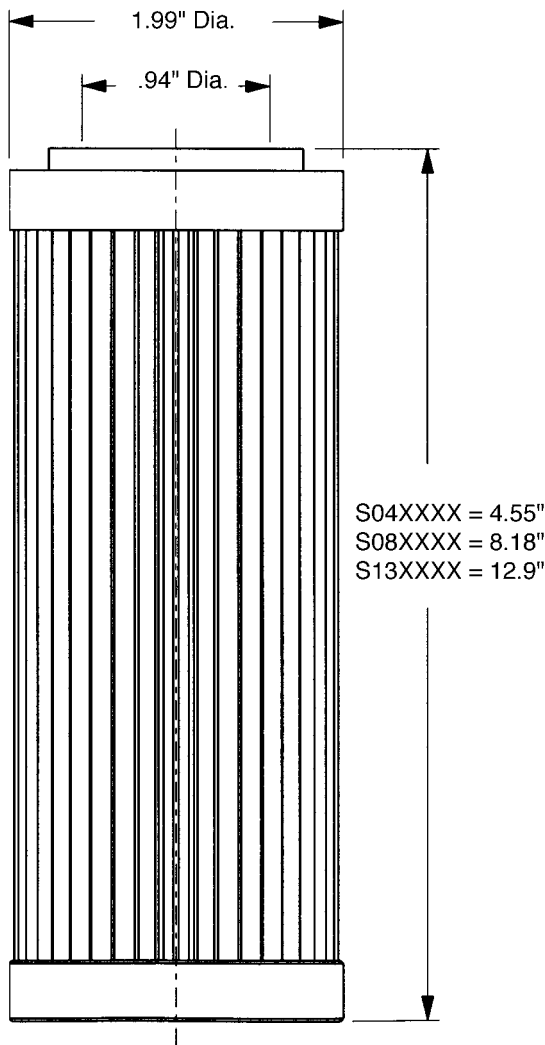
## PALL 9800/9801 INTERCHANGE

Media: Zinga Synthetic Z-Glass Media  
 $B_x > 200$  Absolute Filtration

Application: S6 Series High Pressure Filters

Temperature: Nitrile Seals -45°F to +225°F  
 Fluorocarbon Seals -20F to +275F

PRESSURE FILTERS



### 150 PSID RATED ELEMENTS

(For Use in Filters with Bypass Valve Only)

ZINGA P/N	$B_x > 200$	PALL P/N
S0403LN	3 Micron	HC9800FDP4H
S0406LN	6 Micron	HC9800FDN4H
S0410LN	10 Micron	HC9800FDS4H
S0420LN	20 Micron	HC9800FDT4H
S0803LN	3 Micron	HC9800FDP8H
S0806LN	6 Micron	HC9800FDN8H
S0810LN	10 Micron	HC9800FDS8H
S0820LN	20 Micron	HC9800FDT4H
S1303LN	3 Micron	HC9800FUP13H
S1306LN	6 Micron	HC9800FUN13H
S1310LN	10 Micron	HC9800FUS13H
S1320LN	20 Micron	HC9800FUT13H

Buna-N Seals Standard. Replace "N" in P/N with "V" for Fluorocarbon.

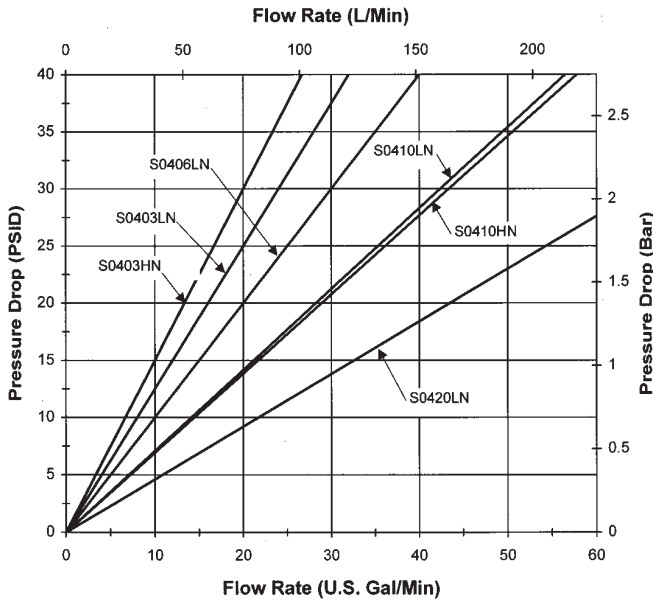
### 3000 PSID RATED ELEMENTS

ZINGA P/N	$B_x > 200$	PALL P/N
S0403HN	3 Micron	HC9801FUP4H
S0410HN	10 Micron	HC9801FUT4H
S0803HN	3 Micron	HC9801FUP8H
S0810HN	10 Micron	HC9801FUT8H
S1303HN	3 Micron	HC9801FUP13H
S1310HN	10 Micron	HC9801FUT13H

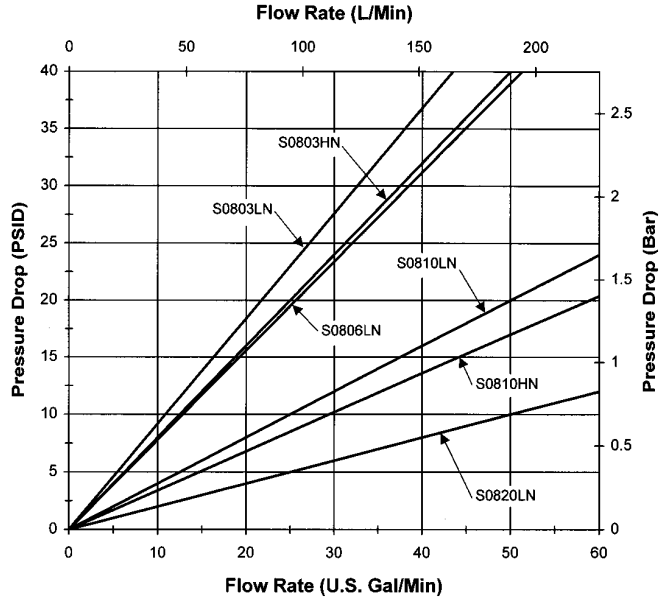
Buna-N Seals Standard. Replace "N" in P/N with "V" for Fluorocarbon.

# S SERIES ELEMENTS

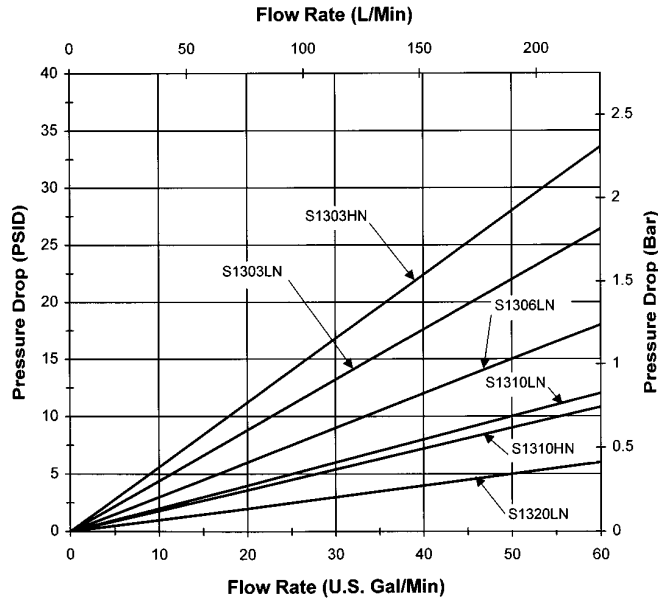
Average Pressure Drop Through Clean Element  
With 150 SUS Oil At 100° F (32 cSt at 40° C)



S04 Series



S08 Series



S13 Series

PRESSURE FILTERS



# W SERIES ELEMENTS

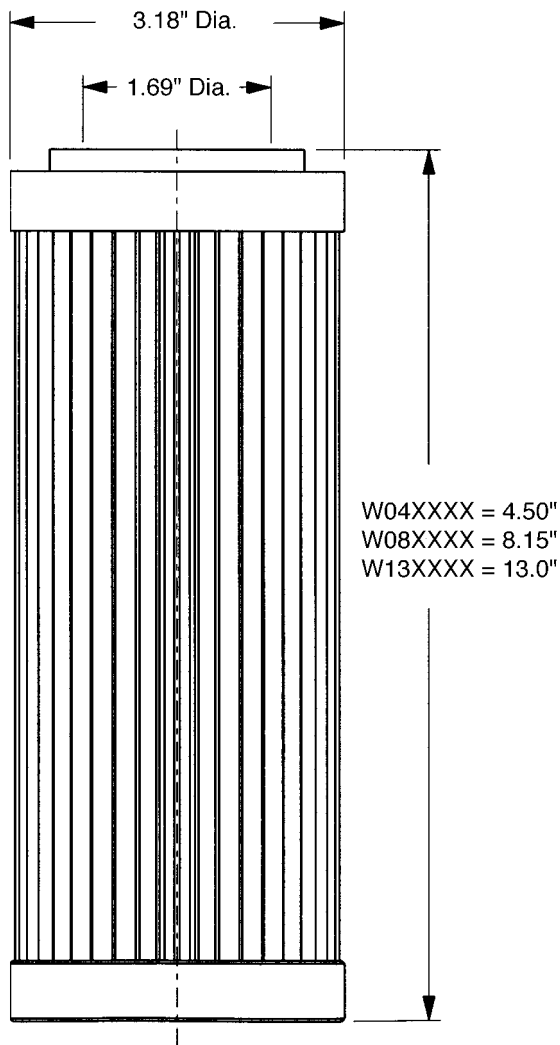
## PALL 9600/9601 INTERCHANGE

Media: Zinga Synthetic Z-Glass Media  
 $B_x > 200$  Absolute Filtration

Application: W1200 & W6 Series Pressure Filters

Temperature: Nitrile Seals -45F to +225F  
 Fluorocarbon Seals -20F to +275F

PRESSURE FILTERS



### 150 PSID RATED ELEMENTS

(For Use in Filters with By-Pass Valve Only)

ZINGA P/N	$B_x > 200$	PALL P/N
W0403LN	3 Micron	HC9600FDP4H
W0406LN	6 Micron	HC9600FDN4H
W0410LN	10 Micron	HC9600FDS4H
W0420LN	20 Micron	HC9600FDT4H
W0803LN	3 Micron	HC9600FDP8H
W0806LN	6 Micron	HC9600FDN8H
W0810LN	10 Micron	HC9600FDS8H
W0820LN	20 Micron	HC9600FDT8H
W1303LN	3 Micron	HC9600FDP13H
W1306LN	6 Micron	HC9600FDN13H
W1310LN	10 Micron	HC9600FDS13H
W1320LN	20 Micron	HC9600FDT13H
W1603LN	3 Micron	HC9600FDP16H
W1606LN	6 Micron	HC9600FDN16H
W1610LN	10 Micron	HC9600FDS16H
W1620LN	20 Micron	HC9600FDT16H

Buna-N Seals Standard. Replace "N" in P/N with "V" for Fluorocarbon.

### 3000 PSID RATED ELEMENTS

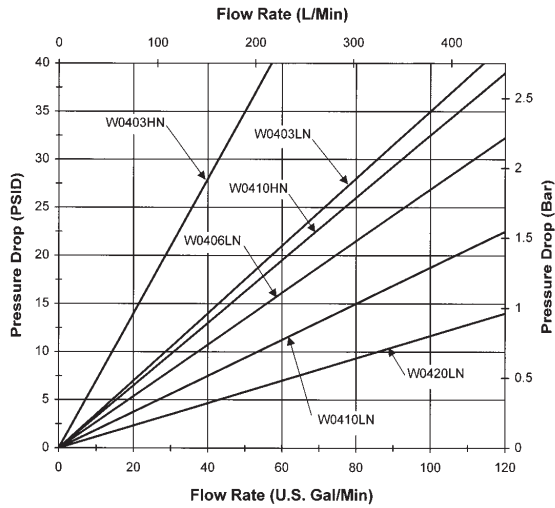
ZINGA P/N	$B_x > 200$	PALL P/N
W0403HN	3 Micron	HC9601FUP4H
W0410HN	10 Micron	HC9601FUT4H
W0803HN	3 Micron	HC9601FUP8H
W0810HN	10 Micron	HC9601FUT8H
W1303HN	3 Micron	HC9601FUP13H
W1310HN	10 Micron	HC9601FUT13H
W1603HN	3 Micron	HC9601FUP16H
W1610HN	10 Micron	HC9601FUT16H

Buna-N Seals Standard. Replace "N" in P/N with "V" for Fluorocarbon.

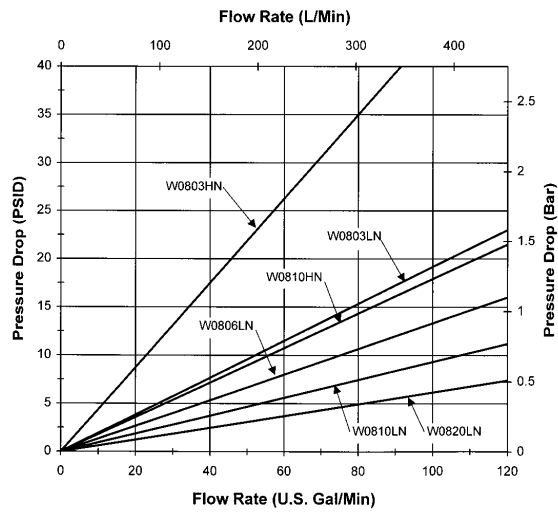


# W SERIES ELEMENTS

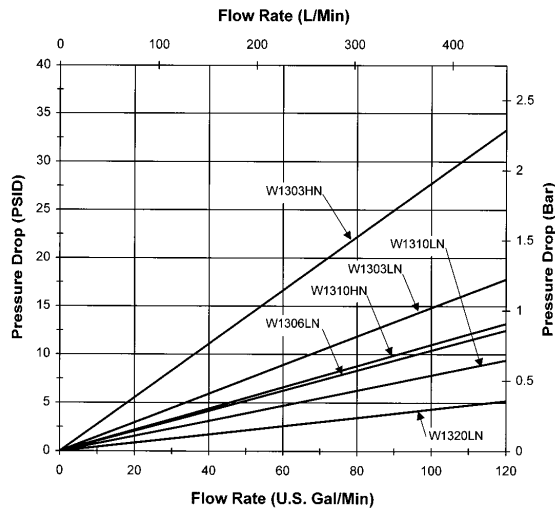
Average Pressure Drop Through Clean Element  
With 150 SUS Oil At 100° F (32 cSt at 40° C)



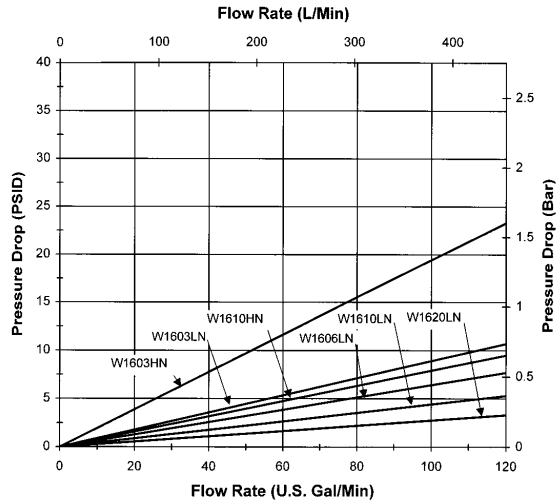
W04 Series



W08 Series



W13 Series



W16 Series

PRESSURE FILTERS



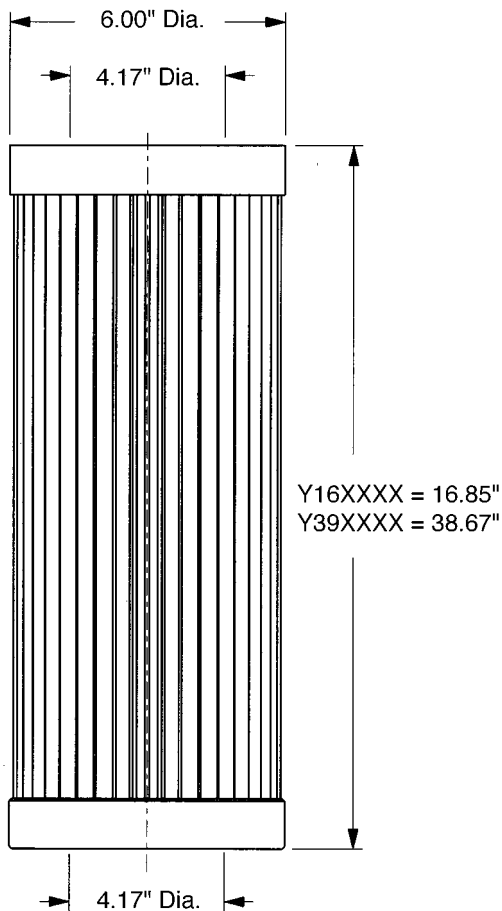
# Y SERIES ELEMENTS

## PALL 8300/8310 INTERCHANGE

Media: Zinga Synthetic Z-Glass Media  
 $B_x > 200$  Absolute Filtration

Temperature: Nitrile Seals -45F to +225F  
 Fluorocarbon Seals -20F to +275F

PRESSURE FILTERS



### 150 PSID RATED ELEMENTS

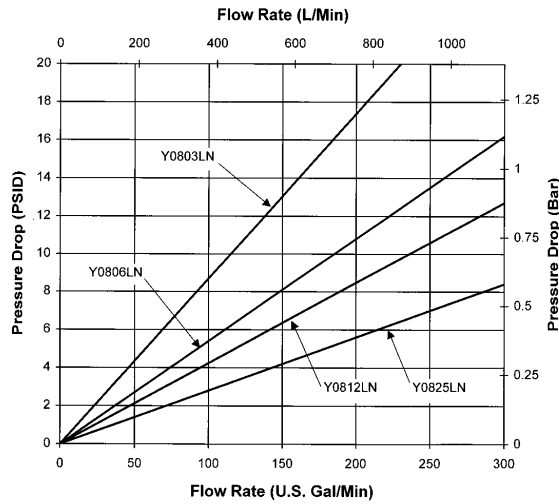
(For Use in Filters with By-Pass Valve Only)

ZINGA P/N	$B_x > 200$	PALL P/N
Y0803LN	3 Micron	HC8300FDP8H
Y0806LN	6 Micron	HC8300FDN8H
Y0812LN	12 Micron	HC8300FDS8H
Y0825LN	25 Micron	HC8300FDT8H
Y1603LN	3 Micron	HC8300FDP16H
Y1606LN	6 Micron	HC8300FDN16H
Y1612LN	12 Micron	HC8300FDS16H
Y1625LN	25 Micron	HC8300FDT16H
Y3903LN	3 Micron	HC8300FDP39H
Y3906LN	6 Micron	HC8300FDN39H
Y3912LN	12 Micron	HC8300FDS39H
Y3925LN	25 Micron	HC8300FDT39H
Y3903LND	3 Micron	HC8310FKP39H
Y3906LND	6 Micron	HC8310FKN39H
Y3912LND	12 Micron	HC8310FKS39H
Y3925LND	25 Micron	HC8310FKT39H

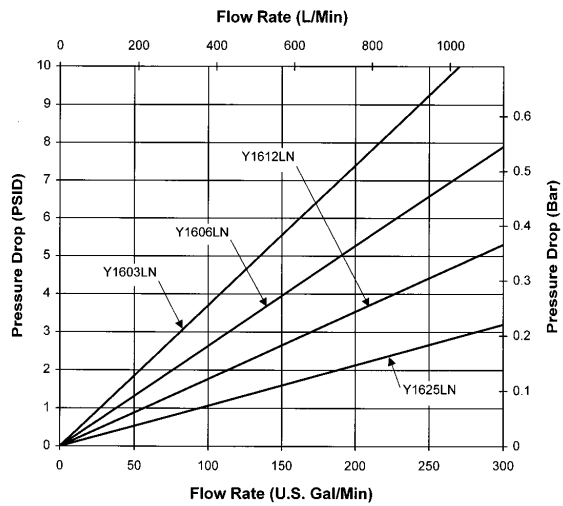
Buna-N Seals Standard. Replace "N" in P/N with "V" for Fluorocarbon.

# Y SERIES ELEMENTS

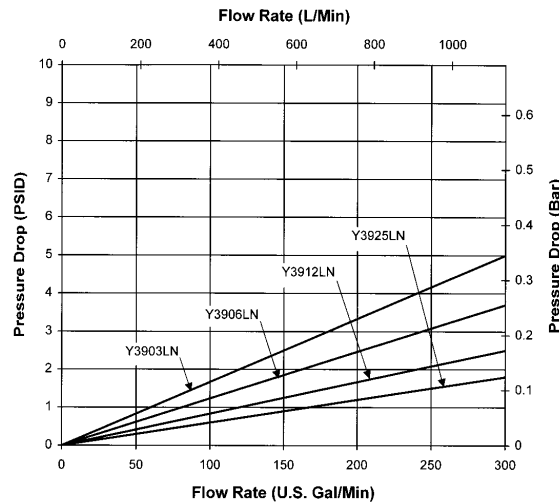
Average Pressure Drop Through Clean Element  
With 150 SUS Oil At 100° F (32 cSt at 40° C)



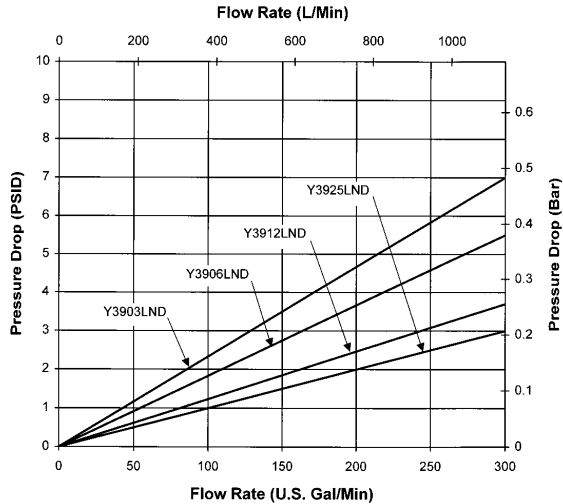
Y08 Series



Y16 Series



Y39XXX Series



Y39XXXD Series

PRESSURE FILTERS