

➤ Single Acting Cylinders

- 39 Models
- Internal plunger threads
- Snap in grooved saddles
- Rod wiper seals out dirt and contamination
- Collar fixture threads
- Two base mounting holes on most models
- High strength steel construction from gun drilled solid bar
- High flow 3/8" NPTF couplers
- Collar thread protector
- One piece high grade alloy bearing for side load protection and long life
- Polyurethane cup seal provides for optimum performance
- Industrial hard chrome plated ram helps prevent rust and corrosion
- Solid steel cylinder body
- Heavy duty return spring provides quicker retraction
- Ideal for lifting and pressing
- Maximum working pressure: 10,000 psi / 700 bar



H1010

Cylinder Accessories

Saddle



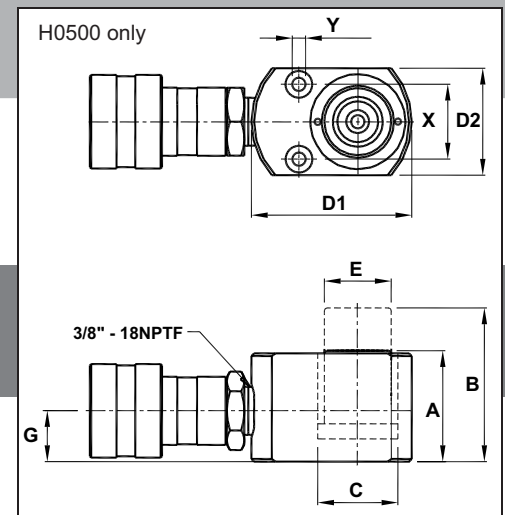
Hose



Gauge



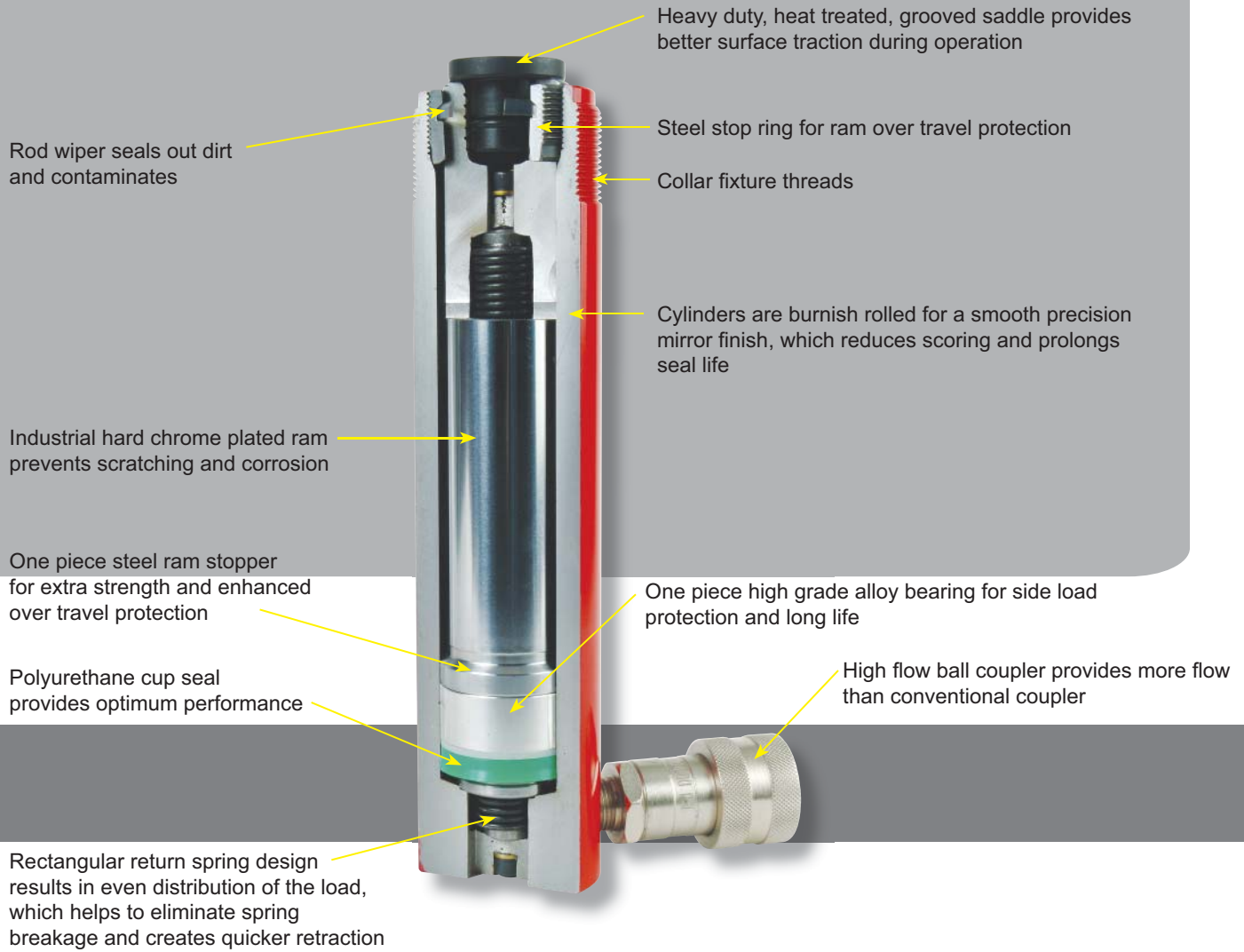
Base



• Please refer to page 6-7 for 15-100 ton specification

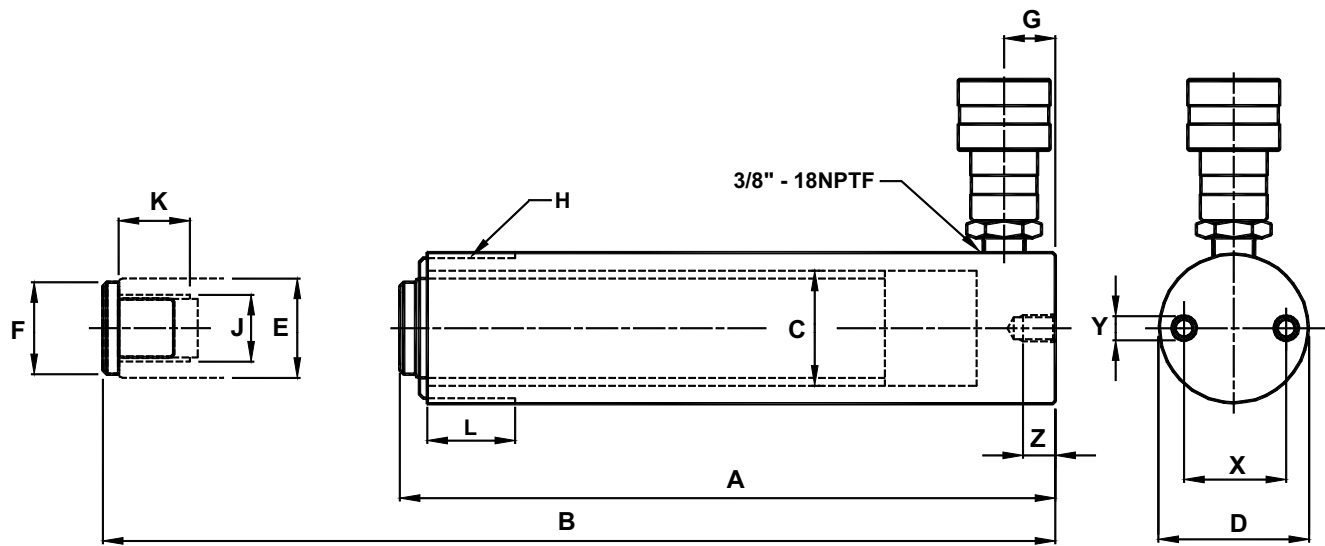
Cylinder Capacity	Stroke	Model Number	Cylinder Effective Area	Oil Capacity	Collapsed Height	Extended Height	Cylinder Bore Dia.	Outside Dia.	Plunger Dia.	Saddle Dia.
					A	B				
(tons)	(in)		(in ²)	(in ³)	(in)	(in)	(in)	(in)	(in)	(in)
5	0.63	H0500	1.10	0.69	1.61	2.24	1.18	2.36 x 1.58	0.98	N/A
	1.00	H0501			4.58	5.58				
	3.07	H0503			6.65	9.72				
	5.08	H0505	1.00	5.08	8.70	13.78	1.13	1.50	1.00	0.98
	7.09	H0507			10.71	17.80				
	9.09	H0509			12.72	21.81				
10	1.00	H1001	2.24	2.24	3.62	4.62	1.69	2.26	1.49	N/A
	2.01	H1002			4.84	6.85				
	4.02	H1004	2.24	17.81	6.85	10.87	1.69	2.26	1.49	1.38
	5.94	H1006			9.84	15.78				
	7.95	H1008			11.85	19.80				
	9.96	H1010			13.86	23.82				
	11.97	H1012			15.87	27.84				
	14.02	H1014			17.72	31.74				

The Difference



Base to Inlet Port	Collar Thread	Collar Thread Length	Plunger Internal Thread	Plunger Thread Length	Base Mounting Hole			Weight	Model Numbers
					Bolt Circle	Thread	Thread Depth		
G	H	L	J	K	X	Y	Z		
(in)	(in)	(in)	(in)	(in)	(in)	(in)	(in)	(lbs)	
0.75	N/A	N/A	N/A	N/A	1.10	0.2	N/A	2.9	H0500
								3.1	H0501
								3.5	H0503
0.79	1 1/2"-16	1.10	3/4"-16UNF	0.63	1.00	1/4"-20UNC	0.55	4.4	H0505
								4.9	H0507
								5.7	H0509
0.77	2 1/4"-14	1.30	#10-24UNC	0.24	1.56	5/16"-18UNC	0.55	4.0	H1001
								6.6	H1002
								8.2	H1004
								9.5	H1006
0.77	2 1/4"-14	1.30	1"-8UNC	0.79	1.56	5/16"-18UNC	0.55	11.9	H1008
								14.1	H1010
								15.0	H1012
								16.6	H1014

➤ Single Acting Cylinders



• Please refer to page 4-5 for 5-10 ton specification

Cylinder Capacity	Stroke	Model Number	Cylinder Effective Area	Oil Capacity	Collapsed Height	Extended Height	Cylinder Bore Dia.	Outside Dia.	Plunger Dia.	Saddle Dia.
					A	B				
(tons)	(in)		(in ²)	(in ³)	(in)	(in)	(in)	(in)	(in)	(in)
15	0.99	H1501	3.14	3.11	4.88	5.87	2.00	2.75	1.63	1.50
	2.01	H1502		6.31	5.87	7.88				
	3.98	H1504		12.50	7.87	11.85				
	5.87	H1506		18.43	10.67	16.54				
	7.87	H1508		24.71	12.68	20.55				
	9.88	H1510		31.02	14.69	24.57				
	12.01	H1512		37.71	16.65	28.66				
	14.02	H1514		44.02	18.66	32.68				
25	1.02	H2501	5.14	5.24	5.84	6.86	2.56	3.35	2.24	1.97
	2.01	H2502		10.33	6.82	8.83				
	3.94	H2504		20.25	8.78	12.72				
	5.94	H2506		30.53	10.79	16.73				
	7.95	H2508		40.86	12.80	20.75				
	9.96	H2510		51.19	14.80	24.76				
	12.24	H2512		62.91	16.73	28.97				
	14.25	H2514		73.25	18.74	32.99				
30	8.27	H3008	6.49	53.67	15.24	23.51	2.87	4.00	2.24	2.13
55	2.01	H5502	10.99	22.06	6.93	8.94	3.74	5.00	3.15	2.76
	3.98	H5504		43.69	8.94	12.91				
	6.22	H5506		68.34	11.14	17.36				
	13.27	H5513		145.77	18.15	31.42				
75	6.14	H7506	16.10	98.88	11.22	17.36	4.53	5.79	3.74	2.76
	13.11	H7513		211.07	19.37	31.42				
100	6.61	H10006	20.57	136.08	14.06	20.69	5.12	6.97	4.13	2.76
	10.24	H10010		210.60	17.68	27.93				



Base to Inlet Port	Collar Thread	Collar Thread Length	Plunger Internal Thread	Plunger Thread Length	Base Mounting Hole			Weight	Model Numbers
					Bolt Circle	Thread	Thread Depth		
G	H	L	J	K	X	Y	Z		
(in)	(in)	(in)	(in)	(in)	(in)	(in)	(in)	(lbs)	
0.98	2 3/4"-16	1.18	1"-8UNC	0.98	1.88	3/8"-16UNC	0.51	7.3	H1501
								8.6	H1502
								11.2	H1504
								15.4	H1506
								17.6	H1508
								20.5	H1510
								23.1	H1512
26.0	H1514								
0.98	3 5/16"-12	1.93	1 1/2"-16	1.18	2.31	1/2"-13UNC	0.75	13.5	H2501
								14.6	H2502
								19.2	H2504
								23.2	H2506
								27.1	H2508
								30.9	H2510
								33.7	H2512
37.7	H2514								
1.97	3 5/16"-12	1.93	1 1/2"-16	1.18	N/A			40.8	H3008
1.22	5" - 12	2.17	N/A		3.75	1/2"-13UNC	0.75	34.2	H5502
								42.6	H5504
								51.8	H5506
								81.1	H5513
1.18	5 3/4" - 12	1.73			N/A			67.5	H7506
								115.5	H7513
1.57	6 7/8" - 12	1.73	N/A		5.50	3/4"-10UNC	1	115.5	H10006
								151.5	H10010